

2019 / 20

UNCOVERED

STEVIE WONDER & PRINCE

MUSIC DIRECTION, VOCAL ARRANGEMENTS & ORCHESTRATIONS BY **REZA JACOBS**

NOVEMBER 4-7

KOERNER HALL, TELUS CENTRE
FOR PERFORMANCE AND LEARNING
273 BLOOR STREET WEST

PRODUCED BY

THE **MUSICAL
STAGE** CO.

#UNCOVERED

PRESENTING
SEASON
SPONSOR



UNCOVERED AT
KOERNER HALL
PRODUCTION
SPONSOR



UNCOVERED
PRODUCING
PATRON

Anonymous

UNCOVERED
LEADING
LIGHTS

**The Haynes-Connell
Foundation**

MUSICALSTAGECOMPANY.COM



Cue the lights Raise the curtain Get ready for an unforgettable performance!

CIBC is pleased to support The Musical Stage Company's 13th annual signature concert spotlighting the hit songs from two hugely influential musical artists, Stevie Wonder and Prince, as part of our continued commitment to the arts. Together, we are fostering a vibrant musical theatre community in Toronto.

The CIBC logo is a registered trademark of CIBC.

WELCOME TO UNCOVERED: STEVIE WONDER & PRINCE



When Prince died at the age of 57 in April 2016, Stevie Wonder delivered emotional tributes on CNN, CBS, and in Rolling Stone. During his life, Prince called Stevie Wonder “a role model,” and those sentiments were

returned in spades through Wonder’s poetic and profound eulogies. Revealing a deep and personal friendship, Wonder noted: “I’m just glad I was able to say to him ‘I love you’ when I last saw him.”

Celebrity artists like Stevie Wonder and Prince serve as inspirations to millions of listeners. But we rarely stop to think about who inspires the artists that move us. While Stevie Wonder and Prince played together publicly a handful of times (including in a top-secret performance for Barack and Michelle Obama in 2015), Wonder’s tearful interviews at a time of great tragedy illuminate the deep friendship and mutual admiration that existed between the two artists. Pairing Stevie Wonder with Prince in **UNCOVERED** gives us the

opportunity to not only revel in the music of two of the most bold and important artists of our time, but to imagine how each was shaped by the work of the other.

In **UNCOVERED**, we celebrate great music while focusing on story, letting our musical approach be inspired and led by the lyrics. In the case of both Stevie Wonder and Prince, the stories they told in their songs are astoundingly rich and singular. How lucky we are that thanks to their individual artistry and mutual admiration, we get to forever experience these glorious masterpieces.

Enjoy the show!

Mitchell Marcus

THE ROGER & KEVIN GARLAND
ARTISTIC & MANAGING DIRECTOR,
THE MUSICAL STAGE COMPANY

LAND ACKNOWLEDGMENT

The Musical Stage Company performs in venues both traditional and surprising. With gratitude and respect, we acknowledge that Toronto is in the “Dish With One Spoon Territory.” The Dish With One Spoon is a treaty between the Anishinaabe Nation, Mississaugas of the New Credit, and Haudenosaunee Confederacy that bound them to share the territory and protect the land. Subsequent Indigenous Nations and peoples, Europeans, and all newcomers, have been invited into this treaty in the spirit of peace, friendship, and respect. We recognize the presence and endurance of all Indigenous people on and off this land, both recorded and unrecorded, upon which we are privileged to be able to live, work, and play.

PERFORMANCE NOTE

As part of **UNCOVERED**, we ask actors to perform quotes from the featured songwriters, bringing the essence and spirit of these iconic artists to the evening, without striving for impersonation.

In **UNCOVERED: STEVIE WONDER & PRINCE**, we recognize that Stevie Wonder’s lifelong blindness is a key aspect of his life. While tonight, a seeing actor will wear sunglasses to evoke Stevie Wonder’s iconic look, the actor will not be playing blind. While we do not wish to erase Wonder’s disability, we also do not wish to perform disability with non-disabled actors.

The Musical Stage Company presents

UNCOVERED

STEVIE WONDER & PRINCE

Music Direction, Vocal Arrangements & Orchestrations by **REZA JACOBS***

Dramaturgy by **MITCHELL MARCUS**** & **KEVIN WONG**

STARRING

THOM ALLISON, COLIN ASUNCION, AIMEE BESSADA, JULLY BLACK,
DIVINE BROWN, LYDIA PERSAUD, JACKIE RICHARDSON & CARY SHIELDS

with background vocals by **MICHELLE BOUEY** & **ALANA HIBBERT†**

and **SARAH AFFUL** as Stevie Wonder and **CHY RYAN SPAIN** as Prince

ORCHESTRA

Piano & Conductor
REZA JACOBS*

Percussion
JAMIE DRAKE***

Basses
JUSTIN GRAY

Cellos
ERIKA NIELSEN

CREATIVE & PRODUCTION TEAM

Staging
ELENA MOSOFF & MITCHELL MARCUS

Script
JASON SPETTER & KEVIN WONG

Lighting Design Supervisor
MATT BIRNBAUM

Lighting Designer
CHRIS MALKOWSKI

Stage Manager
AJ LAFHAMME

Music Assistant
JONATHAN CORKAL

Stylist
CHANTELLE HINDS
for **SHARON ANGELA**

Blind Disability Dramaturg
JESSICA WATKIN

Production Assistant
ROBYNNE HARDER

* The Fine Furneaux Director of Music

** The Roger & Kevin Garland Artistic & Managing Director

*** Additional orchestrations, drum, and percussion arrangements by Jamie Drake

† The 2019–20 Diana Bennett & Spencer Lanthier Featured Performer



The Musical Stage Company engages, under the terms of the Independent Theatre Agreement, actors and stage managers who are members of the Canadian Actors' Equity Association (CAEA).



The Musical Stage Company is a member of the Toronto Alliance for the Performing Arts (TAPA).



The musicians engaged in this production are members of the Toronto Musicians' Association (TMA) Local 149 of the Canadian Federation of Musicians and American Federation of Musicians.

SONGS FEATURED IN UNCOVERED

SONGS ARE LISTED IN ALPHABETICAL ORDER

STEVIE WONDER

For Once in My Life
JACKIE RICHARDSON

I Wish
DIVINE BROWN

Knocks Me Off My Feet
THOM ALLISON

Living for the City / Village Ghetto Land
THOM ALLISON, COLIN ASUNCION, JULLY BLACK,
ALANA HIBBERT

My Cherie Amour
JULLY BLACK

Part-Time Lover
AIMEE BESSADA

Saturn
CARY SHIELDS

Shoo-Be-Doo-Be-Doo-Da-Day
LYDIA PERSAUD

Sir Duke
FULL CAST

Superstition
COLIN ASUNCION

PRINCE

How Come U Don't Call Me Anymore?
JULLY BLACK

Kiss
DIVINE BROWN*

Little Red Corvette
AIMEE BESSADA

Manic Monday
THOM ALLISON

Nothing Compares 2 U
CARY SHIELDS, LYDIA PERSAUD

Purple Rain
JACKIE RICHARDSON


Raspberry Beret
CARY SHIELDS


When Doves Cry
AIMEE BESSADA, DIVINE BROWN, LYDIA
PERSAUD


*movement created by DIVINE BROWN in collaboration
with TRAVIS KNIGHTS


The text featured in **UNCOVERED: STEVIE WONDER & PRINCE** has been curated from actual quotes spoken by Stevie Wonder & Prince.

All vocal arrangements have been created in collaboration with the performing artists.
Background vocals co-created and performed by **MICHELLE BOUEY & ALANA HIBBERT**.

 Running time is approximately 120 minutes. There will be one 20 minute intermission.

 As a courtesy to the audience and artists, latecomers will be seated at an appropriate break in the performance, if possible.

 Cell phones and other electronic devices are distracting for actors and audience members, please turn them off during the show.

 Videotaping or other video/audio recording of this production is strictly prohibited.

SPECIAL THANKS

Sara Baker

Megan Deeks

Clare Dennis

Travis Knights

John & Patti Loach

Sarah & David

Macdonald

Barb Onrot

Alison Rampersad

Jason Spetter

Kledia Verria

Fred Yurichuk

The Staff at RCM &
the TELUS Centre
for Performance &
Learning

THE HISTORY OF UNCOVERED

For 13 extraordinary years, The Musical Stage Company has UnCovered the catalogues of The Beatles, Simon & Garfunkel, Michael Jackson, Leonard Cohen, Joni Mitchell, Carole King, James Taylor, Sting, The Police, Billy Joel, Elton John, Queen, David Bowie, Bob Dylan, Bruce Springsteen, Stevie Wonder, and Prince.

FALL 2007



PHOTO COURTESY OF PHIL'S BLOG.

The first UNCOVERED concert is held at the now-closed Diesel Playhouse as a one-night only concert benefit, featuring the songs of The Beatles interpreted for an audience of 387.

SPRING 2009



PHOTO COURTESY OF THE RANDOLPH THEATRE (FORMERLY KNOWN AS THE BATHURST ST. THEATRE).

Following the great success of UNCOVERED: THE BEATLES, UNCOVERED returns with a reimagined look at the catalogues of Simon & Garfunkel, this time at the Bathurst Street Theatre, bringing the concert to 500 people.

SPRING 2010-2011



PHOTO COURTESY OF THE MUSICAL STAGE COMPANY.

UNCOVERED becomes an annual fundraiser for The Musical Stage Company, spotlighting Michael Jackson in 2010 and Joni Mitchell & Leonard Cohen in 2011.

SPRING 2012



KOERNER HALL AT THE TELUS CENTRE FOR PERFORMANCE AND LEARNING.

UNCOVERED moves to the stunning and acoustically magnificent Koerner Hall for a one-night-only concert, featuring the music of John Lennon & Paul McCartney, reaching 1000 Toronto music lovers.

FALL 2012



PHOTO BY JOANNA AYKOL.

The Musical Stage Company transforms UNCOVERED from a fundraiser into a fully conceived original concert each season, and UNCOVERED: CAROLE KING & JAMES TAYLOR opens the 2012-13 Musical Stage Company season at Koerner Hall.

FALL
2013-2017

PHOTO BY JOANNA AYKOL.

UNCOVERED returns to Koerner Hall, growing from a one-night-only event to a three-night series as The Musical Stage Company's signature annual concert, reaching 3000 patrons.

FALL
2017-2018

PHOTO BY JONATHAN CASTELLINO.

Following extraordinary demand, UNCOVERED adds performances at the George Weston Recital Hall, and tours to the Burlington Performing Arts Centre and Mississauga's Living Arts Centre, reaching 4000 people from across the GTA.

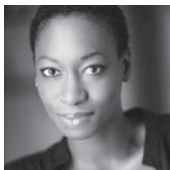
FALL 2019



PHOTO BY DAHLIA KATZ.

UNCOVERED returns for an unprecedented six nights across Koerner Hall and the George Weston Recital Hall as one of the most anticipated cultural events of the fall in Toronto, connecting an anticipated 5000 music lovers to the songs of Stevie Wonder & Prince.

BIOGRAPHIES



SARAH AFFUL

Stevie Wonder

For The Musical Stage Company: **DEBUT**. Currently based in Toronto, Sarah Afful has

graced some of Canada's biggest stages, including six seasons at the Stratford Festival. Credits in Toronto include Obsidian Theatre's Canadian premiere of **HANG** and the title role in Souleppher's **ORLANDO**, for which she was nominated for a Dora Award for Outstanding Performance. Up next, you can catch her in Crow's Theatre's production of **JULIUS CAESAR**.



THOM ALLISON

Performer

For The Musical Stage Company: **UNCOVERED: STING & THE POLICE; ELEGIES** (2007, 2014);

A NEW BRAIN. Thom Allison can be seen as "Pree" in the hit series **KILLJOYS**. Thom has appeared on Broadway in **PRISCILLA, QUEEN OF THE DESERT** and in the original Canadian companies of **MISS SAIGON, THE WHO'S TOMMY** and **RENT**. At The Stratford Festival: **ROMEO AND JULIET, MY FAIR LADY, THE KING AND I, KING HENRY VIII, and INTO THE WOODS**. At the Shaw Festival: **RAGTIME, WONDERFUL TOWN, A LITTLE NIGHT MUSIC, and FOLLIES: IN CONCERT**. Additional credits include **THE WIZARD OF OZ** (Young People's Theatre), **CABARET** (Theatre Calgary), **ANNIE** (Grand Theatre), **EVITA** (Theatre Calgary/Royal Manitoba Theatre Centre) and **THE DROWSY CHAPERONE** (The Vancouver Playhouse, The Citadel, National Arts Centre, Royal Manitoba Theatre Centre). TV/Film: **MURDOCH MYSTERIES, KIM'S CONVENIENCE, CBC's OVER THE RAINBOW, I ME WED, ROAD TO CHRISTMAS, LEAVING METROPOLIS**. His CD, **A WHOLE LOTTA SUNLIGHT**, is available on iTunes. www.thomallison.com



COLIN ASUNCION

Performer

For The Musical Stage Company: **DEBUT**. Colin Asuncion is a Toronto-based singer

and cabaret artist. He has produced a number of solo cabarets and was a 2018 Broadway World Toronto nominee for Best Cabaret Performance. Selected theatre credits: Juicy in **PRISON DANCER** (Citadel Theatre), Jack in **INTO THE WOODS** (Hart House Theatre), Angel in **RENT** (Fallen Rock Productions), Mitch Mahoney in **THE 25TH ANNUAL PUTNAM COUNTY SPELLING BEE** (Easy Street Productions). Television: Season 3 Competitor on **THE GREAT CANADIAN BAKING SHOW** (CBC), Guest commentator on **THE AFTER SHOW** (MTV Canada).



AIMEE BESSADA

Performer

For The Musical Stage Company: **UNCOVERED: JONI MITCHELL & CAROLE KING**. Aimee

Bessada is a composer, songwriter, and performer currently residing in Los Angeles. A recent alumni of the prestigious CFC Slaight Music Lab, she has quickly added a number of projects to her growing portfolio as a composer. She has created original music for the Hulu series **HOLLY HOBBIE** as well as the CBC web series **HOW TO BUY A BABY** (nominated for a 2018 International Emmy), both in their second season. Additionally she has written music for the films **LATE NIGHT, AMERICAN WOMAN**, as well as the 2019 revamped **FOUR WEDDINGS AND A FUNERAL** as assistant to composer Lesley Barber.

“THE MUSICAL STAGE COMPANY IS INDISPENSABLE.”

J. Kelly Nestruck, The Globe and Mail



Their Someday is the freedom to pursue their passion.

The hard work, perseverance and vision of emerging artists demonstrate the power of having – and the joy of realizing – a Someday®. Together with programs like the apprentice program at The Musical Stage Company, we support a diverse range of Canadian talent in communities across the country through the RBC Emerging Artists Project.



Let's Make Someday Happen™



© / ™ Trademark(s) of Royal Bank of Canada. VPS103801

39782 (01/2019)



It's Time to Shine

For your business to earn rave reviews, you need a talented team who understands both your goals and how your industry is performing. For 60 years, MNP has been helping businesses take centre stage by delivering personalized business strategies that allow you to shine, every time.

Contact Jon MacNeil CPA, CA at 416.596.1711 or jon.macneil@mnp.ca

ACCOUNTING > CONSULTING > TAX

MNP.ca

Wherever business takes you.



BIOGRAPHIES



MATT BIRNBAUM

Lighting Design
Supervisor

For The Musical Stage
Company: 13 seasons of
UNCOVERED (Lighting

Designer); **JOHN & JEN** (Assistant Stage
Manager); **ELEGIES: A SONG CYCLE**; **A MAN
OF NO IMPORTANCE** (Associate Producer).
Matt is thrilled to be joining The Musical Stage
Company for his 13th season. When he is not
lighting these shows, Matt spends his days
as the General Manager for the Harold Green
Jewish Theatre Company. Many thanks to
Mitchell for inviting him back year after year
and much love to Ryla and Blake.

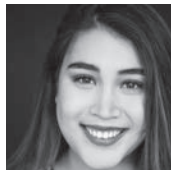


JULLY BLACK

Performer

For The Musical Stage
Company: **CAROLINE,
OR CHANGE** (upcoming);
UNCOVERED: JONI

MITCHELL & CAROLE KING. Jully Black is a
platinum-selling singer, songwriter, performer,
international recording artist and multiple
Juno Award winner. She has collaborated with
industry heavyweights such as **DESTINY'S
CHILD** and **SEAN PAUL**, has shared the
stage with superstars such as **CELINE DION**,
ELTON JOHN and **ETTA JAMES**, to name a
few. As CEO of Jully Black Entertainment
Inc., Jully continues to contribute to the
music landscapes that she has helped define
throughout her illustrious 20+ year career
as Canada's Queen of RnB/Soul. Jully is a
phenom in Canadian entertainment, lifestyle
and public speaking arenas. It is with purpose
driven ideals and boundless spiritual fortitude
that she continues to refine and reinvent her
artistry. Early 2020 marks Jully's next, highly
anticipated, full-length recording project titled
2020, along with her musical theatre debut
and starring role in the Tony Award-winning
musical **CAROLINE, OR CHANGE**.



MICHELLE BOUEY

Performer

For The Musical
Stage Company:
**2018-19 BANKS PRIZE
RECIPIENT; UNCOVERED:**

JONI MITCHELL & CAROLE KING. Michelle
Bouey, singer/songwriter/actor, hails from
Charlottetown, PEI. Since her graduation
from the Music Theatre program at Sheridan
College, she has been busy on a number of
fronts. Some of her favourite theatre credits
include **ROSE** (Soulpepper), **GREASE** (Winter
Garden Theatre), **FREAKY FRIDAY** (Theatre
Aquarius), **THE WIZARD OF OZ** (Grand Theatre),
RENT (CAA Theatre), **ALADDIN: THE PANTO**
(Drayton Entertainment). Film/TV: **THE
MOBLEES** (CBC), **ODD SQUAD** (PBS/TVO), **THE
HANDMAID'S TALE** (MGM/Hulu), **JAPANIZI:
GOING, GOING, GONG!** (YTV/DisneyXD), and
Top Ten on **OVER THE RAINBOW** (CBC). In 2018,
Michelle was nominated for a Juno Award with
THE MOBLEES, and she is currently recording
and writing her own music. Her first three
singles are streaming on iTunes and Spotify,
and her debut music visual is streaming on
YouTube. Shoutout to my family, best friends,
and TH! Enjoy the show!



DIVINE BROWN

Performer

For The Musical Stage
Company: **UNCOVERED:
QUEEN & BOWIE**;
UNCOVERED: DYLAN &

SPRINGSTEEN; PASSING STRANGE. Select
theatre credits include **RENT** (Mirvish); **AIN'T
MISBEHAVIN'** (Canadian Stage); **LIFE, DEATH
AND THE BLUES** (Theatre Passe Muraille);
OBEAH OPERA (Nightwood); **FATHER COMES
HOME FROM THE WARS** (Soulpepper). On
television, she has most recently appeared in
the CBC series **SCHITT'S CREEK** for 3 seasons
as a Jazzagal.

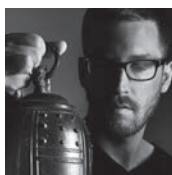


JONATHAN CORKAL

Music Assistant

For The Musical Stage Company: **REPRINT** (Accompanist/Copyist);

UNCOVERED: JONI MITCHELL & CAROLE KING; DR SILVER: A CELEBRATION OF LIFE (Music Assistant). Additional credits as Music Director include **DRAMA 101** (Toronto Fringe); **SPRING FEVER** (Smile Theatre); **HAIR**, and **THE PENELOPIAD** (Hart House). As Associate Music Director: **HEATHERS** (Hart House); **THE PREPOSTEROUS PREDICAMENT OF POLLY PEEL** (Toronto Fringe); Training: Sheridan College's Music Theatre Performance program. Jonathan is a Toronto-based music director, accompanist, copyist and actor. He is forever thankful to his family in Chile and Canada for their constant support, and to the **UNCOVERED** team for the wonderful opportunity to work on another inventive year of reimagined music. Enjoy!



JAMIE DRAKE

Percussion & Additional Orchestrations, Drum, and Percussion Arrangements

For The Musical Stage Company: 12 seasons

of **UNCOVERED, NEXT TO NORMAL; FUN HOME; LIFE AFTER; EDGES**. Selected additional credits: **LONDON ROAD** (Canadian Stage); **MATILDA** (Mirvish); **SANCTUARY SONG** (NAC); **SEUSSICAL, JACOB TWO-TWO** (YPT), and incidental music for the Shaw Festival. Jamie is a Toronto-based percussionist, drummer, and composer, who is known for his stylistic diversity. He received his Doctor of Musical Arts from the University of Toronto and has premiered works by Christos Hatzis, Nicole Lizée, and John Luther Adams. As a member of **TORQ PERCUSSION QUARTET**, he has been a featured soloist with the Toronto Symphony, Montreal Symphony, and the Buffalo Philharmonic. He also serves as the percussionist for the renowned Hamilton

Children's Choir, with whom he's performed on three continents. He is the drummer/percussionist and bandleader for cabaret superstar **SHARRON MATTHEWS** and plays in the Motown band **THE BIG SOUND**. Jamie is a proud Yamaha Canada artist. [@opus_32](http://jamiedrake.ca)



JUSTIN GRAY

Basses

For The Musical Stage Company: **NEXT TO NORMAL; FUN HOME**, 6 seasons of **UNCOVERED**.

Justin Gray is a Toronto-based award-winning bassist, composer, producer and educator. His main influences include jazz, R&B, Indian classical and world music. Justin is currently on faculty at Humber, Sheridan and Centennial College. Throughout this career, Justin has received a number of awards and distinctions, most recently a nomination for Instrumental Solo Artist of the Year at the Canadian Folk Music Awards. In 2010, Justin invented and co-created a new hybrid instrument, the Bass Veena, and is now emerging as the first artist to perform on it worldwide. Justin currently leads his own contemporary world music ensemble, **JUSTIN GRAY & SYNTHESIS**, which recently released their debut album *New Horizons*. www.JustinGraySynthesis.com.



ROBYNNE HARDER

Production Assistant

For The Musical Stage Company: 3 seasons of **UNCOVERED, ONE SONG GLORY** (2016 Stage

Manager). Robynne Harder is a Toronto based director, producer, filmmaker, and amateur ukulele player. Selected credits include: Director/Producer of **MEANT and EURYDICE** (Styx and Stones Productions); Director of **TRANSFERRING KYLE** (The InspiraTO Festival); Directing Apprentice, **THE MILLENNIAL MALCONENT** (Tarragon Theatre); Production Assistant (Yonge Street Theatricals). Robynne holds a B.F.A. from the Ryerson School of ►

BIOGRAPHIES

Performance in Theatre Production and is a graduate from the Commercial Theatre Institute's producing intensive in New York. Robynne is the Production Manager of The School of Toronto Dance Theatre and the Co-Creator and Co-Artistic Director of Styx and Stones Productions.



ALANA HIBBERT

Performer

The 2019-20 Diana Bennett & Spencer Lanthier Featured Performer

For The Musical Stage Company: **CAROLINE,**

OR CHANGE (upcoming); **ONCE ON THIS ISLAND; CAROLINE, OR CHANGE** (2012); **PARADE**. Alana is a Dora-nominated actor and singer who has appeared on many stages across Canada. She recently appeared as Gertrude in the world premiere of the newly re-imagined **KRONBORG—THE HAMLET ROCK MUSICAL** (Charlottetown Festival). Selected credits include **MARY AND MAX** (Theatre Calgary); **CAROUSEL, THE SOUND OF MUSIC** (Stratford Festival); **THE MOUNTAINTOP, RAGTIME, GUYS AND DOLLS, TROUBLE IN TAHITI, MAJOR BARBARA** (Shaw Festival); **THE WIZARD OF OZ** (YPT); six seasons with the Charlottetown Festival; and **HAIR** (Canadian Stage). She will be appearing next in **INTO THE WOODS** (TIFT).



REZA JACOBS

Music Director, Vocal Arranger, Orchestrator

The Fine Furneaux Director of Music

For The Musical Stage Company: **CAROLINE,**

OR CHANGE (upcoming); 12 seasons of **UNCOVERED; FUN HOME; LIFE AFTER; CAROLINE, OR CHANGE** (2012); and more. Reza is an award-winning music director, arranger, composer, and sound designer. Reza won his third Dora Award for Outstanding Musical Direction for **LIFE AFTER** (The Musical Stage Company/Canadian Stage/Yonge Street Theatricals). Credits include: Sound Design

and Composition for The Shaw Festival, Stratford Festival, Young People's Theatre, Factory Theatre, Tarragon, Theatre Passe Muraille, Volcano, Cahoots, Luminato Festival & Harbourfront's World Stage Festival.



AJ LAFLAMME

Stage Manager

For The Musical Stage Company: **CAROLINE, OR CHANGE** (upcoming); **NEXT TO NORMAL;**

ONEGIN; YOU ARE HERE. Selected stage management credits include **THE OVERCOAT, DECLARATIONS, LIV STEIN, CHIMERICA, JULIE, LONDON ROAD, THE ARSONISTS, RED** (Canadian Stage); **THE BOOK OF LIFE, A BEAUTIFUL VIEW, ANOTHER AFRICA, THE AFRICA TRILOGY** (Volcano Theatre); **THE BOY IN THE MOON, A&R ANGELS** (Crow's Theatre); **MUSIK FUR DAS ENDE** (Soundstreams); **THE BALLAD OF STOMPIN' TOM** (Sudbury Theatre Centre); **BUDDY: THE BUDDY HOLLY STORY, MAGGIE & PIERRE, INTO THE WOODS, PIRATES OF PENZANCE** (Thousand Islands Playhouse); **ROCKING HORSE WINNER** (Tapestry Opera); **ALL SHOOK UP** (Globe Theatre); **THE UNPLUGGING, BINGO!** (Factory Theatre); **WAITING ROOM** (Tarragon Theatre); **IT'S A WONDERFUL LIFE, KIM'S CONVENIENCE, SPOON RIVER, LA RONDE, TRUE WEST** (Soulpepper); **TOSCA, LA TRAVIATA, DIE ZAUBERFLOTE, LA TRAGEDIE DE CARMEN** (Highlands Opera Studio). Upcoming: **TREEMONISHA** (Volcano Theatre).

“THE MUSICAL STAGE COMPANY IS SO ON A ROLL.”

Karen Fricker, Toronto Star

Supporting
Canadian
talent, **locally.**



BMO is proud to sponsor
The Musical Stage Company
and the **Launch Pad Program.**

BIOGRAPHIES



CHRIS MALKOWSKI Lighting Designer

For The Musical
Stage Company:
NEXT TO NORMAL
(Lighting Assistant).

Chris Malkowski is a professional lighting designer based in Toronto and designs lights for dance, drama, opera, musical theatre and live events across the world. Selected credits include: **THE BLACK DRUM** (Lighting Designer, Soulpepper/Deaf Culture Centre), **BACKBONE** Europe Tour (Lighting Director, Red Sky Performance), **AMAL, LAST 15 SECONDS** (Associate Design, Tunisia/Egypt Tour), **MIDDLETOWN** (Associate Design, Crow's Theatre), **MASTER HAROLD AND THE BOYS** International Tour (Associate Design, Shaw Festival), **IN THE CONTINUUM** (Black Ink Collective), **ANTIGONE, PANTALONE'S PALACE** (Brock University), **COME DOWN FROM UP RIVER** (TNB, Foster Festival), **DIRECTOR'S PROJECT** (Shaw Festival), **FAR AWAY** (Best of Fringe 2016). Chris is a graduate of the Ryerson University Performance Production Program and an Associate Member of the Associated Designers of Canada.



ELENNA MOSOFF Staging

For The Musical Stage
Company: 10 seasons
of **UNCOVERED**. Elenna
Mosoff is a theatrical

director and leadership coach who has worked in Canada, the US, and Europe. As the former Associate Artistic Producer for The Musical Stage Company (2010-2013), Elenna is very proud to be part of The Musical Stage Company culture and family. Selected theatre credits as director include **ZED.TO, VISITATIONS** (The Mission Business); **EQUUS, REEFER MADNESS: THE MUSICAL** (Hart House Theatre). Elenna also produced Outside the March's acclaimed 2015 production of **MR. BURNS: A POST-ELECTRIC PLAY**. With her own company, The Mission Business, she has produced and created experiences for many corporations

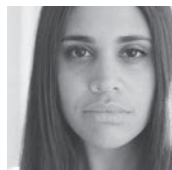
across North America. She is sometimes known as Camp Counsellor of the Universe. She creates events and experiences that bring people together for deeper connections. Find out more at www.elennamosoff.com



ERIKA NIELSEN Cellos

For The Musical Stage
Company: **ONEGIN**.
Canadian cellist

Erika Nielsen enjoys a dynamic career as a collaborative artist, chamber musician, orchestral player, and educator, spanning Baroque and Classical to New Music and contemporary genres. Erika has performed with **KANYE WEST** and **JOHNNY REID**, and is a Dora Award nominee for her performance in **ONEGIN**. She was Principal Cellist of the **SUDBURY SYMPHONY ORCHESTRA**, and performs with **CLASSIC ALBUMS LIVE**, Motown band **THE BIG SOUND**, **REZONANCE BAROQUE ENSEMBLE**, and ELO tribute **STRANGE MAGIC**. She can be heard on many albums, such as The Trews, Jennifer Castle, and The Weather Station. Erika is a graduate of The Glenn Gould School and Queen's University and is on faculty at National Music Camp of Canada. She maintains a busy private studio, and is also a visual artist and author. Her first book, *Sound Mind* (Trigger Publishing 2019) is an Amazon #1 bestseller. [@celloerika](http://www.celloerika.com)



LYDIA PERSAUD Performer

For The Musical Stage
Company: **ONE SONG
GLORY** (2006). Lydia
Persaud is a Brampton-

born, Toronto-based singer-songwriter. Her debut album **LET ME SHOW YOU** was released in May of 2019 and features the songs "Honey Child", "With You" and "Well Wasted". The lead single "Low Light" cracked the top 10 of the CBC Music Top 20. Lydia also performs with **DWAYNE GRETZKY** and has sung with **LEE FIELDS, GORDON LIGHTFOOT, ROYAL WOOD** and more.



JACKIE RICHARDSON

Performer

For The Musical Stage Company: 5 seasons of **UNCOVERED**. Jackie is

one of Canada's foremost singers of gospel, blues, and jazz. Selected theatre: **SPOON RIVER, COOKIN' AT THE COOKERY** (Dora Award), **AIN'T MISBEHAVIN'** (Dora Award), **BIG MAMA! THE WILLIE MAE THORNTON STORY** (Jessie Award), **ADVENTURES OF A BLACK GIRL IN SEARCH OF GOD**, and **ST. CARMEN OF THE MAIN**. Selected film and TV: **TURNING TO STONE** (Gemini Award), **THE GOSPEL ACCORDING TO THE BLUES** (Gemini Award), **SINS OF THE FATHER** (NAACP nomination), **HALLELUJAH GOSPEL SERIES** (as host & performer for 24 episodes), **DEAR VIOLA** (TV movie). Ms. Richardson has received The Canadian Actors' Equity Lifetime Achievement Award, The African Canadian Achievement Award, and The Toronto Blues Society Lifetime Achievement Award.



CARY SHIELDS

Performer

For The Musical Stage Company: **DEBUT**. Cary Shields is honoured to join the cast of **UNCOVERED**

and sing the music of two of his favourite artists. Shields is a Toronto born singer/songwriter and actor. Selected theatre credits include Roger in **RENT** (Broadway), Marcus in **TABOO** (Broadway), Stacey Jaxx in **ROCK OF AGES** (Stage West) and the musical revue **HOLLYWOOD HITS** (Stage West). Most recently he performed his original one man show, **I SHOT THE ALBATROSS**, which chronicles a decade of his life through music and storytelling. As always, he dedicates this show to his family and TLW.



CHY RYAN SPAIN

Prince

For The Musical Stage Company: **DEBUT**. Chy Ryan Spain is a black, queer, gender non-

binary multi-disciplinary artist, performer, activist, organizer, and educator. Spain was nominated for a Dora Mavor Moore Award in 2013 along with their fellow ensemble members for their work in **OF A MONSTROUS CHILD: A GAGA MUSICAL** (EcceHomo). In 2018, Spain and the cast of **POOL (NO WATER)** (Cue6) took home a Dora Award for Best Ensemble in the Independent Theatre category. They regularly perform with Toronto's premiere women of colour burlesque troupe, **LES FEMMES FATALES**, and hold the inaugural title of Toronto's Bent Beauty Supreme. Other select theatre credits include: **SERENITY WILD** (Katie Sly), **ROPE RUNNING OUT** (Iemontree), **SMALL AXE** (Project Humanity), **THE QUEER BATHROOM STORIES** (Libido Productions), **THE PASTOR PHELPS PROJECT: A FUNDAMENTALIST CABARET** (Ecce Homo), and their original solo performance piece **THE PRICE OF BLEACH** (Rhubarb 2007).

**“THEATRE THAT
RISKS MUCH
AND WINS BIG.”**

John Coulbourn, Toronto Sun

SAVE THE DATE FOR UNCOVERED 2020

November 16–19, 2020 at Koerner Hall



Is your company looking for a first class client hosting experience?
Contact us to book exclusive corporate experiences for 2020. Packages include:

- Best seats in the house
- Reception spaces with customizable catering options
- Private entertainment
- Brand showcase and marketing opportunities

For more information, contact Victoria at victoria@musicalstagecompany.com.

WE ARE DELIGHTED TO WELCOME THE FOLLOWING GROUPS TO UNCOVERED: STEVIE WONDER & PRINCE

Adams Group	Dykstra Group	It Takes A Grandmother	Mikelberg Group	Sniderman Group
Alter Group	Earle Group	James Group	Mouro Group	Solomon Group
Anneliese Group	Ellis Group	JP Morgan	Mowat Group	Spisak Group
Aphasia Institute	ESERVUS	Kahansky Group	Nickerson Group	Stantec Architecture
Arbus Group	Fabulous Friends Group	Killeen Group	Oxford Properties Group	Stoch Group
Banks Group	Feldman Group	Koenig-Woodyard Group	Pavloic Group	Talent House
Baron Group	Ferri Group	Leader Group	Pollock Group	Teitelbaum Group
Bracken Group	Gasco Goodhue St-Germain LLP	Levenson Group	Pratt Group	The LIFE Institute
Brand Group	Goddard Group	Lewis Birnberg Hanet, LLP	PROBUS North York	Travers Group
Burk Group	Godel Group	Licensed to Learn	Rattos Group	Unsung Heroes Productions
Campbell Group	Gray Group	Lipman, Zener & Waxman PC	Rodness Group	Wallace Group
Canadian Young Judaea	Guarascio Group	Mark Davis Group	Rogers Group	Walters Group
ClaimsPro	Hamovitch Group	Matlow Group	Schachter Group	White Group
David Group	Herlick Group	Mazin Group	Scott Group	Wolpert Group
David Rawlings, JP Morgan Chase & Co	Herman Group	McAuley Group	Sheridan College	Wray Group
Davis Group	Hilton Group	McLeod Group	Silver Group	Wright Group
De Mello Group	Hiltz Group	Michael Kalles Group	Simmons Group	Young Group
Deans Group	Hirsh Group		Simon Group	Zwingerman Groups
Dusek Group	Hoy Group		Slater Group	



Art inspires the creativity in everyone.



Scotiabank is a proud sponsor of Make Me A Song at the Musical Stage Company.

Get inspired at scotiabank.com/arts



Scotiabank®

*Registered trademarks of The Bank of Nova Scotia.



We are working with organizations like **The Musical Stage Company** to open doors for a more inclusive tomorrow.

Learn more at td.com/thereadycommitment

**THE
READY
COMMITMENT**

Proud to
support
**One Song
Glory**

© The TD logo and other TD trade-marks are the property of The Toronto-Dominion Bank

THE MUSICAL STAGE COMPANY

THE MUSICAL STAGE CO. is Canada's leading charitable musical theatre company. Established in 2004, we strive to make Canada a leader in musical theatre by telling our most important stories with music.

We believe it's better with music.

We are inspired by music's unique ability to viscerally affect people and are committed to cultivating experiences - onstage and off - that transform lives, build empathy and create community through musical theatre.

We incubate new Canadian musicals from development to production, investing in Canadian musical theatre writers and building national and international partnerships. Our musical productions - including award-winning contemporary musicals, world premieres and concerts - are seen live by 30,000 people over the 80+ nights that we are onstage annually in venues both traditional and surprising. To date, our work has been recognized with

96 Dora Award nominations, 21 Dora Awards (including back-to-back Outstanding Musical Production awards in 2018 and 2019) and 17 Toronto Theatre Critics' Awards.

Our robust education programs develop the artists and audiences of tomorrow, offering musical theatre training that boosts self-confidence and self-expression for over 200 young people each year without cost to the participants. We also curate innovative musical programs in partnership with diverse organizations, maximizing the resonance of our work across disciplines and communities.

UP NEXT AT THE MUSICAL STAGE COMPANY:

CAROLINE, OR CHANGE

Featuring "Canada's Queen of R&B" Jilly Black in her musical theatre debut as Caroline, CAROLINE, OR CHANGE will play the world-renowned Winter Garden Theatre, January 30 - February 15, 2020. For details visit WWW.MUSICALSTAGECOMPANY.COM

INTERACT WITH US

THE MUSICAL STAGE COMPANY'S BLOG: MUSICAL NOTES

Musical Notes is an online hub for discussions about the latest trends, developments, and gossip on musical theatre in Toronto and beyond. Including Artistic & Managing Director Mitchell Marcus's blog, interviews with season artists, and more. Check out *Musical Notes*, a home for any musical aficionado. Visit us at musicalstagecompany.com/musical-notes.

MUSICALSTAGECOMPANY.COM



info@musicalstagecompany.com



[@musicalstageco](https://www.instagram.com/musicalstageco)

Post your pictures & comments about
UNCOVERED using #UnCovered

STAFF

THE ROGER & KEVIN GARLAND
ARTISTIC & MANAGING
DIRECTOR

Mitchell Marcus

EXECUTIVE DIRECTOR,
ADVANCEMENT

Kate Supleve

GENERAL MANAGER
& PRODUCER

Paul Beauchamp

DIRECTOR OF MARKETING
& ENGAGEMENT

Victoria Barber

ASSOCIATE ARTISTIC
DIRECTOR

Aaron Willis

ASSOCIATE PRODUCER

Robyn Hoja

DEVELOPMENT
& COMMUNICATIONS
ASSOCIATE

Alethea Bakogeorge

MARKETING & AUDIENCE
RELATIONSHIP ASSOCIATE

Nik Murillo

METCALF FOUNDATION
INTERN ARTISTIC DIRECTOR*

Jordan Laffrenier

MUSIC ASSISTANT

Jonathan Corkal

ARTISTIC ASSOCIATE

Robert McQueen

ARTISTIC ASSOCIATE

Kevin Wong

THE FINE FURNEAUX
DIRECTOR OF MUSIC

Reza Jacobs

DIRECTOR OF PRODUCTION

Patrick Lavender

EXECUTIVE PRODUCER

David Daniels

ACCOUNTANT

Fiona Crichton

GRAPHIC DESIGN

Sherpa Creative

PUBLICITY

Suzanne Cheriton &

Jenn Perras, Red Eye Media

*Funding for the Metcalf
Foundation Intern Artistic
Director generously provided
by the George Cedric Metcalf
Charitable Foundation

BOARD OF DIRECTORS

CHAIR

Ellen Wallace

VICE CHAIR

Megan Deeks

TREASURER

Curtis Barlow

SECRETARY

Leanne Matlow

Thom Allison

David Auster

Patrick David

Susan Goddard

Randy McAuley

Bart Nickerson

Suzu Rodness

Celia Smith

Lucy White

Rhonda Zwingerman

ADVISORY COUNCIL

Jordan Banks

William J.S. Boyle C.M.

Linda Chu

David Daniels

Roger Garland C.M.

Lucille Joseph

COMING UP AT
**THE MUSICAL
STAGE CO.**

“BRITTA JOHNSON
IS CANADIAN
MUSICAL THEATRE’S
**NEXT GREAT
HOPE.**”

—THE TORONTO STAR

KELLY v. KELLY

AN INTOXICATING NEW CANADIAN MUSICAL

BOOK BY
SARA FARB

MUSIC & LYRICS BY
BRITTA JOHNSON

MAY 15 – JUNE 7, 2020

MARILYN AND CHARLES
BAILLIE THEATRE
26 Berkeley Street

TICKETS
STARTING
AT **\$49**

A MUSICAL STAGE COMPANY PRODUCTION IN ASSOCIATION WITH CANADIAN STAGE

FOR MORE INFORMATION AND TICKETS, VISIT

MUSICALSTAGECOMPANY.COM

THE MUSICAL STAGE CO.

SALUTES...

UNCOVERED

at Koerner Hall
Production Sponsor



UNCOVERED

Producing
Patron

Anonymous

UNCOVERED

Leading Lights

**The
Haynes-Connell
Foundation**

A black and white photograph of Chantelle Hinds. She is wearing a light-colored, belted dress with a large, shaggy fur collar. She has a serious expression and is looking slightly to the side.

chantelle hinds
for
sharon angela

Fulfill your purpose in style.

Sharon Angela helps create
mental capacity so that you're
not overthinking what to wear.

I call this the **Billionaire Mindset.**

sharonangelastyles@gmail.com
(647) 296-8941

OUR 2019-20 SPONSORS

PRESENTING SEASON SPONSOR



UNCOVERED
AT KOERNER HALL
PRODUCTION
SPONSOR



UNCOVERED
PRODUCING PATRON

Anonymous

UNCOVERED
LEADING LIGHTS

The Haynes-Connell
Foundation

GOVERNMENT SUPPORTERS



Canada Council
for the Arts
Conseil des arts
du Canada



ONTARIO ARTS COUNCIL
CONSEIL DES ARTS DE L'ONTARIO
an Ontario government agency
un organisme du gouvernement de l'Ontario



FUNDED BY
THE CITY OF
TORONTO

PRODUCING PATRONS

CAROLINE, OR CHANGE

Linda & Chris
Montague

KELLY V. KELLY

The Don & Shirley Green
Family Foundation

PROGRAM & PRODUCTION SPONSORS

CAROLINE,
OR CHANGE



THE
READY
COMMITMENT

LAUNCH PAD



MAKE ME
A SONG



Scotiabank®

RBC APPRENTICE
PROGRAM



RBC Foundation

ONE SONG
GLORY



THE
READY
COMMITMENT

LEADING LIGHTS

AUBREY AND MARLA DAN
FUND FOR NEW MUSICALS
The Aubrey & Marla Dan
Foundation

CRESCENDO CLUB
Anne-Marie Canning

ONE SONG GLORY
Norine Rose

THE BANKS PRIZE
The Banks Family

MAKE ME A SONG
The Aubrey & Marla Dan
Foundation

THE KATHLEEN C. FREEMAN
LEADERSHIP DEVELOPMENT FUND
Kathleen & Dennis Freeman

LAUNCH PAD

Di Bartolomeo,
Di Lorenzo-
Graham
Foundation

Lucy White

William J.S.
Boyle C.M.

The Slight
Family Foundation

Anonymous

SEASON SUPPORTERS



The Catherine & Maxwell
Meighen Foundation

OFFICIAL HOTEL SPONSOR





The Musical Stage Company is a registered charity BN 86204 4146 RR0001. If you would like more information, please contact Kate Supleve at 416.927.7880 ext. 224 or kate@musicalstagecompany.com

ANOTHER HUNDRED PEOPLE

This season is our most ambitious to date: We're starting a new residency at the historic Winter Garden Theatre, forging ahead with unprecedented development and production support for Canadian writers and providing innovative programs that engage and educate young Ontarians. We are revolutionizing musical theatre in Canada.

To support the organization at this pivotal moment, the Board of Directors is working to grow our community of supporters by *Another Hundred People*.

 Another Hundred People Supporter

 Your spot is waiting!

VIRTUOSO

\$1500+ per year for 3 years



LEAD PLAYER

\$750-\$1499 per year for 3 years



FEATURED PLAYER

\$350-\$749 per year for 3 years



ENSEMBLE

\$150-\$349 per year for 3 years



JOIN OUR COMMUNITY.

Grow with us and together we'll make Canada the leading force in musical theatre. Make your 3-year pledge today.

Visit **Another100People.com** or contact Kate Supleve at **416.927.7880 ext. 224** or **kate@musicalstagecompany.com**.

THE MUSICAL STAGE COMPANY SUPPORTERS

Special thanks to our sponsors, major supporters, Crescendo Club & Virtuoso – core builders of The Musical Stage Company who have committed to a multi-year donation.

SPONSORS & MAJOR GIFTS*

Anonymous (2)
The Banks Family
BMO
Diana Bennett & Spencer Lanthier
David W. Binet
William J. S. Boyle
Anne-Marie Canning
CIBC
The Aubrey and Marla Dan Foundation
Kate Alexander Daniels & David Daniels
Di Bartolomeo, Di Lorenzo-Graham Foundation
Penny Fine & Hugh Furneaux
Kathleen & Dennis Freeman
Roger & Kevin Garland
Andrew Gillespie
The Don & Shirley Green Family Foundation
The Haynes-Connell Foundation
Hendriks Restaurant & Bar
Sheryl & David Kerr
Margie & Peter Kelk
Sarah & David Macdonald
The Catherine & Maxwell Meighen Foundation
Metcalf Foundation
MNP LLP
Linda & Chris Montague
Nu-Trend Construction
RBC Foundation
Norine Rose
Scotiabank
The Slaight Family Foundation
TD Bank Group
Lucy White
Yonge Suites

CRESCENDO CLUB (\$5000+)*

LEADING LIGHT: Anne-Marie Canning
Marsha & Aubrey Baillie Fund at Toronto Foundation
Bulmash-Siegel Fund
Brenda Christen
Linda Chu & John Donald
Kathleen & Dennis Freeman
Howard, Barclay & Associates
Nancy Lockhart & The Murray Frum Foundation
Gary & Margot Marcus
Leanne & David Matlow Family Fund at the Jewish Foundation of Greater Toronto
Noel Mowat
Len & Suzy Rodness
Sherry Vanstone†
Ellen & Les Wallace

VIRTUOSOS (\$1500+)*

The Pat and Tony Adams Freedom Fund for the Arts
Jennifer Angel & Eric Birnberg
Anonymous
Gail & George Anthony
Curtis Barlow
Beauchamp-Winskell Family
Earl Bederman & Ann MacPherson
Byron Bellows
Barbara Black
Brand Family Foundation at the Jewish Foundation of Greater Toronto
Helen Burstyn, C.M.
The Paul Butler and Chris Black Foundation at Toronto Foundation
Louis Charpentier & Robert Wakefield
Mitchell Cohen & Janice Lewis
Mark & Cherie Daitchman
Patrick David & Michael Smith
Mark & Susan Davis
Bruce Dean & Robert Hall
Marg & John Deeks
Megan Deeks & Simon Paabor
Philip Doyle & Yvonne Garcia
Pam & Richard Earle†
Kevin Finora
Jim Fleck
Patricia J. Fleming (FBG) Fund at Toronto Foundation
John & Susan Goddard
Carmen Griffis
Paul Harding & Andrew Horberry
Kent James
The Norman and Margaret Jewish Charitable Foundation
Lucille & Urban Joseph, O.C.
Elaine Kierans & Shawn McReynolds
Scott Lauder
Victoria Lee & Philip Hebert
Ann Leese & Irwin Rotenberg
Linda Lewis & Lorie Cappe
Phil Lind
Patti & John Loach
Jefferson & Sally Mappin
Mitchell Marcus & Orrin Wolpert
Randy McAuley
Sandie Newton / The Edward G. Agency Ltd.
Bart Nickerson
Opolsky Family
The Pottruff Family Foundation
Dr. G R Rastegar & Family
Gary Rogers
Anne & Jeffery Schwartz
Mike Scott
Charlie Seminerio

Corey Shefman
Richard Sniderman & D'Arcy Robert
Celia M. Smith
Gregory & Crystal Smith
Jason Spetter
Marg Steed & Wayne Atkinson
Michael & Ira Tatham
Virginia Thompson
Martin R. Wasserman
Dr. Rhonda Zwingerman & Jeremy Opolsky

LEAD PLAYER (\$750-1499)

Adam Brazier
Don Deboer & Brent Vickar
Haber/Greene Family Fund at the Jewish Foundation of Greater Toronto
Dominique Hansen
The William & Nona Heaslip Foundation
Steven Hurowitz & Diane Osak
Kathy Kacer & Ian Epstein
Fred & Judy Levy
Paul, Jaclyn & Michelle Marcus
David Montgomery
Mary Sinclair
Ian Waldron & Tim Redmann
Paul Westlind
Nan and Jack Wiseman Family Fund at the Jewish Foundation of Greater Toronto
Brenda Wolpert

FEATURED PLAYER (\$350-749)

Scott Belton†
Daniel Brown
Karen Cheah
Robert D. Cook
Barbara de Kat
Louise Ferri & Brian Monti
Brian Fior†
William Flanagan†
David Goldbloom & Nancy Epstein
Julia Grant
Jeff & Joanne Gray
David & Donald Hilton
Allison Himel
Dr. Shelley Hornstein & Sam Rabinovitch
Nina Josefowitz
Roger Keglevich & Andrew Fleming
Barb Kelly
Ken Kirsh†
Lee Lamothe†
Leila & Gary Lax
Kathy & Becky Liddle
Ken Lipson†
Betsy MacDonald

THE MUSICAL STAGE COMPANY SUPPORTERS, CONT.

Anne Matlow & John Bohnen
Shawn McCarthy
Cindy & Ed Nowina
Nancy Pencer
Kerry Pond
Andra & Marc Rubin
Gilda & Allan Rubin
Annalee & Brian Schnurr
Professor Julie Silver
Amanda & Scott Sinclair
Shannon Teskey & John Monczka
Andrew Tremayne
Robert Wallace
Jennifer Webster

ENSEMBLE (\$100-349)

Christie Ackert †
Rick Archbold & Rick Feldman
Anonymous (5)
Janis & Dave Auster
Blaire Baker
Marie Baron
Kendra Bator
David Bell
Scott Belton & Jessica Leeder
Melissa Bencic & Jason Nichols
Bruce Bennett & Anne Simmonds
Mark Biderman
Daniel & Lillian Bodley
Susan Borden
The Boston Consulting Group of
Canada Limited
Penny & Graham Boundy
Linda Bracken
Dianne Bradley
John Brenko
Graham Brunke
Loreli Buenaventura
Leonard & Cheryl Cappe
Joseph Paul Christie
Jeffrey Chu
Laurie Clark
Lyle Clark
Ruth Ann Companion
Donna Daitchman
Jane & Skip Darville
James Davis
Ann Devarashetty
Linda Diener †
Alan Dingle
Sholem Dolgoy
Kevin Doran †
Lisa Douglas
Aubrey D'Souza
Stephen Farb & Esther Yermus

Angela Ferrante
M. Fine & M. Alexandroff
Barbara Fingerote
Anne Fleming
Tim Fort
Karen Franklin
Don & Wendy Fraser
Robert Gard
Elaine Gold
Catherine Graham
Robert Green †
Perry Haig
Tom Hastings
Nancy Hawkins
Leanne Herbert
Roslyn Holden
Lyal Keith Holland
Brett House
Ilene Hyman
Dara & Lorne Indig
Alicia Jeffery & Neil Foster
Susan & Liman Jegins
Rayna Jolley
Norman Kahn
Lynn & Aubrey Kauffman
Sandy Kelly
Jessica Knox
Greg & Alison Knudsen
Lynn Knudsen
Tara Knudsen
Rona Kosansky & Jordan Glick
Francy Kussner
Judith Levkoe
Alice Lin
Clara Lomas
Adrian M. Macdonald
Liane Macdonald
Richard Magnaye
Kevin Magnayon
Mary Mahonny & Peter Donato
Elizabeth Manson
In Honour of Mitchell Marcus
Susan Marcus & Rozanne Grimard
Ruth & Harold Margles
Ken Marple
Liana & Michael Martow
Derritt Mason
Rick Matthews
Pat & John McCormack
David McMullen †
Brian & Kathleen Metcalfe
Julie Michailidis
Wendy Millar & Mark Dawson
Jacquelyn Miskie
The Rev. Marili Moore

Meghan Moore
Joy & Eddy Morassutti
Jeff Morris
Carole & Richard Murzin
Laraine & Neil Naft
Briane Nasimok
Gavin Nevsky
Cindy & Ed Nowina
Sharon Okuno
Andrew Park
Felicia & Ante Pavlovic †
Kenny Pearl
Lynn Petruzzella
Nick Petruzzella
Harold Povilaitis
In Honour of Jolene Read
Dolly Reisman
Emily Robb
Adele & George Robertson
Nicole Rosychuk
Elisa Russo
C. Doreen Rutter
Erin Schachter
Jennifer & Noah Schein
Gayla & Ken Schwartz
Holly Shephard
Penny Shore
Michael & Susan Silver
Susan Sinclair
Gabiella Skubincan
Fay Sliwin †
Gloria Smith
Jonathan David Smith
Rodney Smith
Saralee Smolkin
Michael & Brenda Somer
Deborah Staiman
Jennifer Stein
Voy Stelmaszynski
Ross Stuart
Merrill Swain
Jennifer Teichman
Greg & Jennifer Thompson
Richard M. Thomson
Gail Tolley
John & Dianne Vanstone
Lorne Vineberg
Scott Werry
Marni Whitaker
In Memory of Gregory Williams
Debby Wright
Hersh Zeifman
Marc Zwelling & Judith M. Adam
Connie & Hartley Zwingerman †

*Multi-year giving program. †Contributors to the Another Hundred People pledged giving campaign.

These listings are current as of October 25, 2019, and we have made every effort to ensure appropriate recognition.

If, however, your name has been accidentally omitted, listed incorrectly, or misspelled, please contact Alethea at alethea@musicalstagecompany.com. We apologize in advance for any inconvenience this may cause.

LUXURY, UPSTAGED.



YONGE
SUITES



Yonge Suites is a proud sponsor of The Musical Stage Co, supporting its vision of the cultivation of Canadian Musical Artists through Theatre.

209 Yonge Street | Toronto | 416.477.7000

YONGESUITES.COM

ONE SONG GLORY

Now in its 14th year, *One Song Glory* is a musical theatre training program for 50 youth from across Ontario. *One Song Glory* uses artistic training as a means to develop transferable life skills for youth, without cost to the participants.

“My confidence as a singing actor was first bolstered by *One Song Glory*.”

—Sara Farb, Broadway Performer
Harry Potter and the Cursed Child



Join us on
NOV 17, 2019
for the

**ONE SONG GLORY
FINAL SHOWCASE!**

Buy tickets and learn more about
ONE SONG GLORY by visiting
musicalstagecompany.com



Nu-Trend Construction

INSURANCE CLAIM SPECIALISTS

Nu-Trend Construction is proud to continue our support of world class performances presented by The Musical Stage Company.



 **24-HOUR**
EMERGENCY RESPONSE

WWW.NTCCANADA.COM



416-747-1613



info@ntccanada.com



[@NuTrendConstruction](https://www.facebook.com/NuTrendConstruction)



[@NTCCANADA](https://twitter.com/NTCCANADA)

A THE MUSICAL &
STAGE CO.



OBSIDIAN

PRODUCTION

PRESENTING
PRODUCTION
SPONSOR



THE
READY
COMMITMENT

“A MODERN
MASTERPIECE”

Evening Standard

JULY BLACK in

CAROLINE, OR CHANGE

featuring MEASHA BRUEGGERGOSMAN

JANUARY 30 – FEBRUARY 15, 2020

THE WINTER GARDEN THEATRE 189 YONGE STREET

Caroline, or Change Book and Lyrics by TONY KUSHNER Music by JEANINE TESORI

CAROLINETORONTO.COM