

PRESENTED BY  
**THE MUSICAL  
STAGE CO.**

# PORCHSIDE SONGS

LIVE & IN CONCERT,  
IN YOUR FRONT YARD!



#PORCHSIDESONGSTO

**MUSICALSTAGECOMPANY.COM**

PRESENTING  
SEASON  
SPONSOR



# WELCOME TO PORCHSIDE SONGS



One of the earliest decisions we made when the pandemic began was to curate mini-concerts and tour them to Toronto porches, backyards and neighbourhoods. After a frightening and devastating first wave, we experienced a healing each time another group experienced one of our **PORCHSIDE SONGS**. We watched families, friends and communities come back together after months of separation through live music. And we felt the electricity of giving groups of silenced artists a place to raise their voices again. We were able to share 80 concerts last summer throughout the city, bringing the gift of musical storytelling to over 1500 people.

One year later, the return date for large-scale theatrical productions remains uncertain. But our early experiment with **PORCHSIDE SONGS** has become the guiding light for our work – artists can bring joy, inspiration and togetherness into people’s lives at this time if we meet people where they are and fill unexpected spaces with song.

As the weather warms again, we are so excited to return music to the city with four new and sensational **PORCHSIDE SONGS** concerts, led by remarkable local artists. May witnessing these concerts bring you the same hope and joy that we are feeling by sharing them with you today.

A handwritten signature in black ink that reads "Mitchell Marcus".

Mitchell Marcus  
 THE ROGER & KEVIN GARLAND  
 ARTISTIC & MANAGING DIRECTOR,  
 THE MUSICAL STAGE COMPANY

## LAND ACKNOWLEDGMENT

As you watch **PORCHSIDE SONGS** and reflect on your own memories of experiencing music and storytelling in Tkaronto, please consider its original caretakers both recorded and unrecorded who have been making music and telling stories on this land for generations.

**PORCHSIDE SONGS** is being performed in the “Dish With One Spoon Territory.” The Dish With One Spoon is a treaty between the Anishinaabe Nation, Mississaugas of the Credit, and Haudenosaunee Confederacy that bound them to share the territory and protect the land. Subsequent Indigenous Nations and peoples, colonial settlers, and all newcomers, have been invited into this treaty in the spirit of peace, friendship, and respect.

May these songs, performed on this land, remind us of our responsibility to repair the history of injustice and damage that has been done and continues to be inflicted upon Turtle Island’s Indigenous peoples by its settlers. For more information on how you can be a part of building a more equitable future for Turtle Island’s Indigenous peoples, visit The Truth and Reconciliation Commission of Canada by [clicking here](#).

**TD READY  
COMMITMENT**

TD is proud to support  
**The Musical Stage Company**

Using our  
business,  
people, and  
community  
giving to  
open doors  
for **a more  
inclusive  
tomorrow.**

**Learn more at  
[td.com/tdreadycommitment](https://td.com/tdreadycommitment)**





## Their Someday<sup>®</sup> is the freedom to pursue their passion.

The hard work, perseverance and vision of emerging artists demonstrate the power of having – and the joy of realizing – a Someday<sup>®</sup>. Together with programs like the apprentice program at The Musical Stage Company, we support a diverse range of Canadian talent in communities across the country through the RBC Emerging Artists Project.

**Let's Make Someday Happen<sup>™</sup>**



® / <sup>™</sup> Trademark(s) of Royal Bank of Canada.

# PORCHSIDE SONGS

A Musical Stage Company Experience

---

## SAD LADY SONGS!

Created and Performed by  
SARA FARB & BRITTA JOHNSON

---

## A CRACK IN THE WALL

Created by  
JEWELLE BLACKMAN  
-  
Performed by  
JEWELLE BLACKMAN & EVANGELIA KAMBITES

---

## FAM JAM

Created and Performed by  
GABI EPSTEIN & JAKE EPSTEIN

---

## JUST MY RE-IMAGINATION

Created and Performed by  
SACCHA DENNIS & DAVID ATKINSON


---

PORCHSIDE SONGS Consulting Director  
THOM ALLISON

---

PORCHSIDE SONGS Concert Associates  
PATRICIA CERRA & LUCY MCPHEE

---

 Running time is approximately 40 minutes with no intermission.



Photography and videography is permitted, but please refrain from using flash.

---

## SOCIAL DISTANCING IN EFFECT



Please keep 14 ft apart from the performers and 6 ft apart from each other to ensure the safety of all involved.

# SAD LADY SONGS!

CREATED AND PERFORMED BY  
SARA FARB & BRITTA JOHNSON

Sara Farb and Britta Johnson bring you a captivating concert, celebrating their love of songs by, for, and about complicated women. They'll perform original music, including work from their upcoming musical **KELLY v. KELLY**, as well as beloved pop and folk songs by masters of the sad lady music genre. Sara, who was last seen in **HARRY POTTER AND THE CURSED CHILD** on Broadway, and Britta, a composer and songwriter heralded as "*Canadian musical theatre's next great hope*," have been friends and collaborators since 2014 and ironically find the most glee while making sad lady music.

## SETLIST

### **A Case of You**

JONI MITCHELL

### **Morning (The Children Stay)**

BRITTA JOHNSON & LIZA BALKAN

### **Eugenia's Entrance**

(from *KELLY v. KELLY*)

SARA FARB & BRITTA JOHNSON

### **The Light**

(from *HE IS COMING*)

SARA FARB & BRITTA JOHNSON

### **Poetry**

(from *LIFE AFTER*)

BRITTA JOHNSON

### **Dancing on My Own**

ROBYN

### **Most Beautiful Song**

(from *DR. SILVER: A CELEBRATION OF LIFE*)

ANIKA & BRITTA JOHNSON

### **Al's Song**

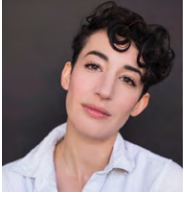
(from *KELLY v. KELLY*)

SARA FARB & BRITTA JOHNSON

Setlist and song order subject to changes and additions.



# SAD LADY SONGS!



## SARA FARB

For The Musical Stage Company: 12 seasons of **UNCOVERED**, Medium Allison in **FUN HOME** (Mirvish/Musical Stage

Company - Dora nomination, TCCA winner), **REFRAMED**, **EDGES**, **KELLY v. KELLY**. Sara Farb is known for Delphi in **HARRY POTTER AND THE CURSED CHILD** on Broadway; five seasons at Stratford (Juliet, Anne Frank, Cordelia, many others); Brigid in **THE HUMANS** (Canadian premiere at Citadel/Canadian Stage); productions at Soulepper, Theatre Calgary, Tarragon, Theatre Passe Muraille, Segal Centre, YPT, and others. Sara and Britta Johnson's original musical, **KELLY v. KELLY**, was postponed due to Covid but will hopefully see a full production this coming theatre season.



## BRITTA JOHNSON

For The Musical Stage Company: **LIFE AFTER**, **DR.SILVER**, **REFRAMED**, **KELLY v. KELLY**. Britta

Johnson is a writer, composer and lyricist based in Toronto. She made her American debut when her original musical, **LIFE AFTER**, opened at the Old Globe in San Diego in 2019 following an extended, multiple Dora Award-winning run at Canadian Stage. Other credits include: With her sister Anika: **DR.SILVER**, **BRANTWOOD**, **JACOB TWO-TWO**, and **TRAP DOOR**. With Sara Farb: **KELLY v. KELLY**, **REFRAMED**. With Katherine Cullen; **STUPIDHEAD!** She was the librettist for choreographer Robert Binet's adaptation of **THE KREUTZER SONATA** (with Ballet Moscow), and was recently named one of 50 Women to Watch by the Broadway Women's Fund of America.



# A CRACK IN THE WALL

---

CREATED BY JEWELLE BLACKMAN

PERFORMED BY JEWELLE BLACKMAN & EVANGELIA KAMBITES

Jewelle Blackman and Evangelia Kambites take you on a musical memoir exploring themes of love, loss, life and everything in between. Having worked together on the Canadian premiere of **HADESTOWN** and Soulpepper's **THE 27 CLUB**, this dynamic duo are not only exceptional storytellers in song but are also seasoned multi-instrumentalists. Guaranteed to enlighten and entertain with music ranging from Nat King Cole and Gnarls Barkley to their own original tunes, Jewelle and Evangelia will leave you believing that *"a crack in the wall doesn't always mean it's about to fall."*

## SETLIST

### **Our Lady of the Underground**

(from *HADESTOWN*)

ANAIS MITCHELL

### **Nature Boy**

NAT KING COLE

### **Crazy**

GNARLS BARKLEY

### **A Long Walk**

JILL SCOTT

### **Miss Celie's Blues**

(from *THE COLOR PURPLE* movie)

QUINCY JONES

### **Mississippi**

EVANGELIA KAMBITES

### **A Crack in the Wall**

JEWELLE BLACKMAN

### **You Gotta Be**

DES'REE

Setlist and song order subject to changes and additions.





# A CRACK IN THE WALL



## JEWELLE BLACKMAN

For The Musical Stage Company: *NoteWorthy 2021, ONCE ON THIS ISLAND, CAROLINE*

**OR CHANGE** (2012). Jewelle Blackman is a multi-talented artist from Toronto, ON. She has played the violin for more than 30 years and graduated from Queen's University with a Double Major in Music & Film as well as completed the Summer Performance Certificate Program at Berklee College of Music. Jewelle is currently on pause from Broadway as part of the Tony/Grammy Winning Best Musical **HADDESTOWN** where she originated the role of Fate. Select credits include **THE WHO'S TOMMY** (Acid Queen); **JACQUES BREL IS ALIVE AND WELL AND LIVING IN PARIS** at the Stratford Festival; **WE WILL ROCK YOU** (Teacher); **THE LION KING** (Nala/Shenzi) Mirvish; **THE WIZARD OF OZ** (Mrs. Banks) Young People's Theatre; **DREAMGIRLS** (Deena Jones) The Grand Theatre/StageWest. Jewelle has also worked extensively in film/TV. For the past few years she has been working on her first musical **YOU KNOW MY NAME, NOT MY STORY**, inspired by Nina Simone's "Four Women."



## EVANGELIA KAMBITES

For The Musical Stage Company: **DEBUT**. Evangelia Kambites is a singer/songwriter, actor,

dancer, and multi-instrumentalist based in Toronto. Notable stage credits include **HADDESTOWN** (Citadel), **BILLY ELLIOT**, **LITTLE SHOP OF HORRORS** (Stratford Festival), the META Award-winning production of **THE ADVENTURES OF A BLACK GIRL IN SEARCH OF GOD** (NAC/Centaur/BTW), **THE HOCKEY SWEATER** (Segal Centre/NAC) **I THINK I'M FALLIN' - THE SONGS OF JONI MITCHELL** (Belfry Theatre), **FOR COLORED GIRLS WHO HAVE CONSIDERED SUICIDE/ WHEN THE RAINBOW IS ENUF**, **THE SECRET CHORD: A LEONARD COHEN EXPERIENCE**, **27 CLUB** (Soulpepper), the Jessie Award-winning production of **AVENUE Q** (Arts Club), **A WHOLE NEW WORLD: THE MAGICAL MUSIC OF ALAN MENKEN** (Angelwalk Theatre), **BUDDY-THE BUDDY HOLLY STORY** (Theatre North West). For television: **MINORITY REPORT** (FOX), **HEROES REBORN** (NBC), **INCORPORATED** (SYFY/CBS), **THE BOYS** (Sony/Amazon). Debut album *FEEL THE FALL*, available now on all platforms! Twitter/Instagram: @ekambites



# FAM JAM

CREATED AND PERFORMED BY  
GABI EPSTEIN & JAKE EPSTEIN

Siblings Gabi Epstein and Jake Epstein take you on the open road with their heartwarming story of music and family. From epic road trips in the backseat of their parents' minivan to seeing each other perform on the stages of Stratford and Broadway, music has always been the driving force behind their unique and special bond. With an acoustic playlist that includes everything from Beatles to Barbra, the Epsteins will have you singing along, reminding us all that family isn't just an important thing - it's everything.

## SETLIST

**We Are Family**  
SISTER SLEDGE

**We Can Work It Out**  
THE BEATLES

**Summer Holiday**  
CLIFF RICHARD & THE SHADOWS

**Defying Gravity/This is the Moment**  
*(from WICKED/JEKYLL & HYDE)*  
STEPHEN SCHWARTS, FRANK  
WILDHORN & LESLIE BRICUSSE

**On Broadway**  
BARRY MANN & CYNTHIA WEIL

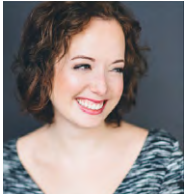
**Safe and Sound**  
HAWKSLEY WORKMAN

**Good Mother**  
JANN ARDEN & BOB FOSTER

**With a Little Help From My Friends**  
*(Covered by Joe Cocker)*  
THE BEATLES

Setlist and song order subject to changes and additions.

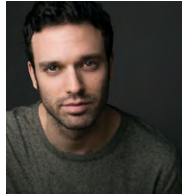




## GABI EPSTEIN

For The Musical Stage Company: **EDGES**. Gabi is a Dora Award winner and one of Canada's

leading stage/cabaret performers, best known for playing Audrey in **LITTLE SHOP OF HORRORS** (Stratford Festival) and Fanny Brice in **FUNNY GIRL** (Segal Centre/Harold Green Jewish Theatre). Other favourites include: **ONCE** (Mirvish— Dora Award Ensemble/Production), **BILLY ELLIOT** (Stratford), **PROM QUEEN** (Segal), **FIDDLER ON THE ROOF** (Stage West/ Capitol Theatre), **HEDWIG AND THE ANGRY INCH**, **CANDIDE**, **DANI GIRL** (TIFT), **THE SOUND OF MUSIC**, **BLOOD BROTHERS**, **PERFECT WEDDING** (Drayton), and **TO LIFE** (HGJT— Dora Award Nomination Outstanding Performance). Gabi's album **SHOW OFF** is on Spotify & iTunes and her famous **GABARETS** have been performed all over North America ("Best Cabaret of the Year" by the Times Square Chronicles in NYC). Her solo show **GABS SINGS BABS** premiered at the Toronto Jazz Festival and will be performed live at Globus Theatre in August. Gabi and her husband Jeremy are the co-founders of **THE NEW LOCAL: DINE IN, SING OUT** which partners with local restaurants to provide live virtual dinner & show events. Follow @gabifayepstein on Instagram for all performance updates and to inquire about singing lessons. Thank you for supporting local artists!



## JAKE EPSTEIN

For The Musical Stage Company: 2 seasons of **UNCOVERED**. Jake Epstein is a Toronto

based actor, singer and writer. He originated the role of Gerry Goffin on Broadway in the Tony-nominated hit **BEAUTIFUL: THE CAROLE KING MUSICAL**, and survived a year as Spider-Man in **SPIDER-MAN: TURN OFF THE DARK**. On tour, he has performed in most major theatres across the U.S., starring in the Tony-winning hit **SPRING AWAKENING** (Melchior) as well as Green Day's **AMERICAN IDIOT** (Will). Off-Broadway, he starred in the New York Times critics pick **STRAIGHT**. Selected regional credits include **BILLY ELLIOT** (Mirvish), **THEREFORE CHOOSE LIFE** (Harold Green Jewish Theatre, Broadway World Award), **DOG SEES GOD** (Michael Rubinoff), two Ross Petty Pantos, and the world premiere of Ken Ludwig's **DEAR JACK, DEAR LOUISE** (Arena Stage in Washington D.C.). He has appeared in over 30 TV shows and films, but is best known for **DEGRASSI** (CTV, Gemini Award), **DESIGNATED SURVIVOR** (ABC and Netflix) and **SUITS** (USA Network and Netflix). Jake's solo show **BOY FALLS FROM THE SKY**, which premiered at the Toronto Fringe Festival (Best of Fringe, Outstanding Production) is slated to be part of the upcoming Off-Mirvish season. Currently, Jake is filming **THE UMBRELLA ACADEMY** (Netflix).

# JUST MY RE-IMAGINATION

CREATED AND PERFORMED BY  
SACCHA DENNIS & DAVID ATKINSON

From Jon Bon Jovi to Gloria Gaynor, Saccha Dennis brings you into her reimagined world by hearing classic songs done with a jazz, funk, and bluesy twist. She was last seen in **COME FROM AWAY**, Broadway's hit show, running at Toronto's Royal Alexandra Theatre, where she played Hannah and others. A Musical Stage Company debut, Saccha is accompanied by pianist and music director, David Atkinson. Come experience the retelling of some of your favourite songs with some of Toronto's most dedicated storytellers.

## SETLIST

**Walking on Sunshine**  
KATRINA & THE WAVES

**Toxic**  
BRITNEY SPEARS

**I Will Survive**  
GLORIA GAYNOR

**Sweet Child O' Mine**  
GUNS N' ROSES

**Love Will Lead You Back**  
TAYLOR DAYNE

**Everybody Hurts**  
R.E.M.

**Happy**  
PHARRELL WILLIAMS

**Mmmhob**  
HANSON

Setlist and song order subject to changes and additions.



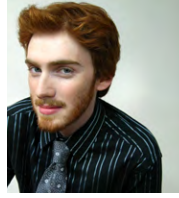
# JUST MY RE-IMAGINATION



## SACCHA DENNIS

For The Musical Stage Company: **DEBUT.** Saccha is thrilled to take part in The Musical Stage

Company's **PORCHSIDE SONGS**. She was last seen in the Broadway hit musical **COME FROM AWAY** as Hannah and Others, at the Royal Alexandra Theatre. An actor, director and creator originally from Montreal, she studied Musical Theatre Performance at Sheridan College in Oakville. Since then, she has toured Canada, U.S and abroad. Her highlighted credits include **SOUSATZKA**; a new musical with Victoria Clark and Montego Glover. Dora-nominated **JACOB TWO-TWO**, and **JAMES AND THE GIANT PEACH** (YPT). Deloris in **SISTER ACT** (Rainbow Stage), Gary Coleman in **AVENUE Q** (Citadel Theatre), Four seasons at the Shaw Festival and 1st U.S National Tour of **WE WILL ROCK YOU**, to name a few. Saccha has also directed hit shows like **LEGALLY BLONDE** (Hart House Theatre) **9 TO 5: THE MUSICAL**, **DREAMGIRLS** (LOT) and most recently, **PIPPIN** (Sheridan College). Besides acting and directing, her passion lies in creating new and reimagined works. You can find Saccha online @ sacchafierce (Insta) & sacchadennis.com



## DAVID ATKINSON

For The Musical Stage Company: **DEBUT.** An award-winning pianist, composer, and music

director, David has most recently been a rehearsal pianist at the Stratford Festival, a keyboard programmer at the Shaw Festival, and in 2019 the Associate Music Director for the Toronto production of **DEAR EVAN HANSEN**. As music director with the silent film-inspired Keystone Theatre, David co-created three new works, including **THE BELLE OF WINNIPEG**, for which he proudly received the 2010 Dora Award for Original Sound Design & Composition. At the piano, David has had the privilege of performing with Shirley Jones, Rufus Wainwright, Elton John, Josh Groban, Boy George, Brent Carver, Robert Pilon, and David Byrne.



# THE MUSICAL STAGE COMPANY

**THE MUSICAL STAGE CO.** is Canada's leading charitable musical theatre company. Established in 2004, we strive to make Canada a leader in musical theatre by telling our most important stories with music.

## We believe it's better with music.

We are inspired by music's unique ability to viscerally affect people and are committed to cultivating experiences - onstage and off - that transform lives, build empathy and create community through musical theatre.

We incubate new Canadian musicals from development to production, investing in Canadian musical theatre writers and building national and international partnerships. Our musical productions - including award-winning contemporary musicals, world premieres and concerts - are seen live by 30,000 people over the 80+ nights that we are onstage annually in venues both traditional and surprising. To date, our work has been recognized with 105 Dora Award nominations, 23 Dora Awards

(including back-to-back Outstanding Musical Production awards in 2018 and 2019) and 19 Toronto Theatre Critics' Awards.

Our robust education programs develop the artists and audiences of tomorrow, offering musical theatre training that boosts self-confidence and self-expression for over 200 young people each year without cost to the participants. We also curate innovative musical programs in partnership with diverse organizations, maximizing the resonance of our work across disciplines and communities.

## UP NEXT AT THE MUSICAL STAGE COMPANY:

### BLACKOUT


The Musical Stage Company returns to the stage July 23 - August 15, 2021, with a new Canadian musical by two of Canada's most exciting new voices, Steven Gallagher and Anton Lipovetsky. Inspired by real events, **BLACKOUT** depicts 3 stories of connection that unfolded when Toronto was dark and strangers banded together to find the light. For details visit [www.musicalstagecompany.com](http://www.musicalstagecompany.com)

## INTERACT WITH US

### THE MUSICAL STAGE COMPANY'S BLOG: MUSICAL NOTES

*Musical Notes* is an online hub for discussions about the latest trends, developments, and gossip on musical theatre in Toronto and beyond. Including Artistic & Managing Director Mitchell Marcus's blog, interviews with season artists, and more. Check out *Musical Notes*, a home for any musical aficionado. Visit us at [www.musicalstagecompany.com/blog](http://www.musicalstagecompany.com/blog).

[MUSICALSTAGECOMPANY.COM](http://MUSICALSTAGECOMPANY.COM)

 [info@musicalstagecompany.com](mailto:info@musicalstagecompany.com)

   @musicalstageco

Post your pictures & comments  
about PORCHSIDE SONGS using  
#PorchsideSongsTO

# STAFF

THE ROGER & KEVIN GARLAND  
ARTISTIC & MANAGING  
DIRECTOR  
**Mitchell Marcus**

EXECUTIVE DIRECTOR,  
ADVANCEMENT  
**Kate Supleve**

GENERAL MANAGER  
& PRODUCER  
**Paul Beauchamp**

DIRECTOR OF MARKETING  
& ENGAGEMENT  
**Victoria Barber**

DEPUTY ARTISTIC  
DIRECTOR  
**Ray Hogg**

ASSOCIATE PRODUCER  
**Robyn Hoja**

DEVELOPMENT  
& COMMUNICATIONS  
ASSOCIATE  
**Alethea Bakogeorge**

MARKETING ASSOCIATE  
**Cameron Vindua**

ARTISTIC DEVELOPMENT  
ASSOCIATE  
**Victoria Wang**

PRODUCTION COORDINATOR  
**Cassandra Di Felice**

INTERN ARTISTIC DIRECTOR  
**Patricia Cerra**

ARTISTIC ASSOCIATE  
**Robert McQueen**

ARTISTIC ASSOCIATE  
**Kevin Wong**

THE FINE FURNEAUX  
DIRECTOR OF MUSIC  
**Reza Jacobs**

EXECUTIVE PRODUCER  
**David Daniels**

ACCOUNTANT  
**Jenny Cheng**

GRAPHIC DESIGN  
**Sherpa Creative**

PUBLICITY  
**Suzanne Cheriton,  
Red Eye Media**

---

# BOARD OF DIRECTORS

CHAIR  
**Ellen Wallace**

VICE CHAIR  
**Patrick David**

TREASURER  
**Randy McAuley**

SECRETARY  
**Ian McAuley**

**Dave Auster**

**Megan Deeks**

**Daren Herbert**

**John Hughes**

**David Kaplan**

**Catherine McCartney**

**Bart Nickerson**

**Paul Orlander**

**Tisha Rattos**

**Suzu Rodness**

**Celia Smith**

**Lucy White**

**Rhonda Zwingerman**

---

# ADVISORY COUNCIL

**Jordan Banks**  
**William J.S. Boyle C.M.**

**Linda Chu**  
**David Daniels**

**Roger Garland C.M.**  
**Lucille Joseph**

Supporting  
Canadian  
talent, **locally.**

**BMO**



We're here to help.™

BMO is proud to sponsor  
**The Musical Stage Company**  
and **LAUNCH PAD.**



# AN INTERVIEW WITH CONSULTING DIRECTOR, THOM ALLISON

BY CAMERON VINDUA

*We sat down with consulting director, Thom Allison, to get an inside look at his experience as consulting director on PORCHSIDE SONGS 2021, which marks his directorial debut with The Musical Stage Company.*



## **What is it about PORCHSIDE SONGS you are most excited about?**

I'm excited about the connection of the creation process to the audience experience; I've always loved being in a room with actors who are working out the "art" itself. How something works, why it doesn't work, and what the focus of a moment is. When it all comes together, there is the moment you put it in front of an audience and see how they receive the outcome; it's magical.

## **What was your directorial relationship like with each PORCHSIDE SONGS performing duo?**

It has been different for each team. I am a sounding board; a dramaturg; assisting in releasing a block; or staging assistance, and can be any combination of these. I am whatever is needed.

## **How do you find digital collaboration as a director?**

In some ways it's not different from the live experience; you can have the same conversations in terms of table work, shaping the piece, etc. The difference is, if the performers are not able to rehearse on their feet together, you can't "run" the show in real time, which is trickier.

## **What would you say has been your biggest challenge as a consultant director leading up to this show?**

Not having a regular rehearsal period; you work with someone and then it's days or weeks between rehearsals or consulting. Then you have to catch up; you are trying to keep the thread of where the piece was going, and join it with where the piece and the artists are now, creatively.

## **If there was an entire musical you could direct for an outside performance, which one would you pick? Why?**

INTO THE WOODS. First of all, it's a great show. Second of all, the messages about the consequences of the choices we make and how our children are looking to us as adults to know how to be in the world could not be clearer or more poignant.

## **If you could choose any musical artist to put on a PORCHSIDE SONGS concert, who would you choose? Why?**

That is a good, hard question. I would watch Jessie Mueller do anything. She seems like she would make it feel so intimate, you'd feel refreshed like you just had a good catch up with your best friend.

## **We have hope that these concerts can help bring some brightness to communities, and renew that hope for the future - what would you say your hopes are for the future of our theatre community?**

My main hope is that theatre can come back soon, but I also hope we've realized theatre can be and do so much more than we thought. We can do PORCHSIDE SONGS. We can record a production and show it online after for those who would love to see theatre but can't get out due to situation or finances. I hope we act on the fact that there are so many more stories that are worth telling that are not just the Eurocentric ones we've been told are the "best." What a wealth of lore we have available to be explored. That is exciting.

THE **MUSICAL**  
**STAGE** CO.

# MUSICAL MOMENTS

We dream of a summer where artists bring joy, magic and togetherness back into people's lives through musical acts of creativity. We awarded \$25,000 in grants to artists to develop, produce and execute dynamic ideas across neighbourhoods of Toronto. This initiative is made possible thanks to the generous support of William J.S. Boyle, C.M.

**SUMMER 2021**

Learn more about *Musical Moments* by visiting  
**[WWW.MUSICALSTAGECOMPANY.COM](http://WWW.MUSICALSTAGECOMPANY.COM)**

# OUR 2021-22 SPONSORS

## PRESENTING SEASON SPONSOR



## GOVERNMENT SUPPORTERS



## PRODUCING PATRONS

UNCOVERED:  
DOLLY PARTON  
Anonymous

BLACKOUT  
The Don & Shirley Green  
Family Foundation

## PROGRAM & PRODUCTION SPONSORS

HIGH PARK  
PROGRAMMING



HIGH PARK  
PROGRAMMING

David Binet  
Lucy White

ONE SONG  
GLORY

The Aubrey & Marla  
Dan Foundation

ONE SONG  
GLORY



NOTEWORTHY



MARQUEE



MUSICAL MOMENTS

William J.S. Boyle,  
C.M.

RBC APPRENTICE  
PROGRAM



## LEADING LIGHTS

AUBREY AND MARLA  
DAN FUND FOR NEW  
MUSICALS

The Aubrey & Marla  
Dan Foundation

THE BANKS PRIZE

The Banks Family

CRESCENDO CLUB

Anne-Marie Canning

THE KATHLEEN  
C. FREEMAN LEADERSHIP  
DEVELOPMENT FUND

Kathleen & Dennis  
Freeman

NOTEWORTHY

Andrew Gillespie

ONE SONG GLORY

Norine Rose

UNCOVERED:  
DOLLY PARTON

The Haynes-Connell  
Foundation

## SEASON SUPPORTERS



The Catherine & Maxwell  
Meighen Foundation

The F.K. Morrow  
Foundation

Metcalf  
Foundation



## DESIGN PARTNER



The Musical Stage Company is a registered charity BN 86204 4146 RR0001. If you would like more information, please contact Kate Supleve at 416.927.7880 ext. 224 or [katesupleve@musicalstagecompany.com](mailto:katesupleve@musicalstagecompany.com)

# THE MUSICAL STAGE COMPANY SUPPORTERS

Special thanks to our sponsors, major supporters, Crescendo Club & Virtuosos — core builders of The Musical Stage Company who have committed to a multi-year donation.

## SPONSORS & MAJOR GIFTS\*

Anonymous (2)  
The Banks Family  
David W. Binet  
BMO  
William J. S. Boyle  
Anne-Marie Canning  
The Aubrey and Marla Dan Foundation  
Kate Alexander Daniels & David Daniels  
Di Bartolomeo, Di Lorenzo-Graham  
Foundation  
Penny Fine & Hugh Furneaux  
Kathleen & Dennis Freeman  
Roger & Kevin Garland  
Andrew Gillespie  
The Government of Ontario  
The Don & Shirley Green Family  
Foundation  
Hal Jackman Foundation  
The Haynes-Connell Foundation  
Sheryl & David Kerr  
Sarah & David Macdonald  
Catherine McCartney Cadogan/Karen  
Tanz  
The Catherine & Maxwell Meighen  
Foundation  
Metcalf Foundation  
MNP LLP  
Linda & Chris Montague  
The F. K. Morrow Foundation  
Nu-Trend Construction  
RBC Foundation  
Norine Rose  
Sherpa Creative  
The Slight Family Foundation  
TD Bank Group  
Lucy White

## CRESCENDO CLUB (\$5000+)\*

### LEADING LIGHT:

Anne-Marie Canning  
Marsha & Aubrey Baillie Fund at Toronto  
Foundation  
Beauchamp-Winskell Family  
Bulmash-Siegel Fund  
Linda Chu & John Donald  
Patrick David & Michael Smith  
Jim Fleck  
Kathleen & Dennis Freeman  
Howard, Barclay & Associates  
In Memory of Jake Kennedy  
Gary & Margot Marcus  
Leanne & David Matlow Family Fund at  
the Jewish Foundation of Greater  
Toronto  
Noel Mowat  
Paul Orlander & Helayna Shekter  
Len & Suzy Rodness  
Gary Rogers  
Sherry Shannon-Vanstone  
Celia M. Smith  
Ellen & Les Wallace

## VIRTUOSOS (\$1500+)\*

Jennifer Angel & Eric Birnberg  
Anonymous  
Gail & George Anthony  
Curtis Barlow  
Earl Bederman & Ann MacPherson  
Diana Bennett & Spencer Lanthier  
Brand Family Foundation at the Jewish  
Foundation of Greater Toronto

Helen Burstyn, C.M.  
The Paul Butler and Chris Black  
Foundation at Toronto Foundation  
Louis Charpentier & Robert Wakefield  
Mitchell Cohen & Janice Lewis  
Mark & Cherie Daitchman  
The Peter & Eleanor Daniels Foundation  
Mark & Susan Davis  
Bruce Dean & Robert Hall  
Marg & John Deeks  
Megan Deeks & Simon Paabor  
Phillip Doyle & Yvonne Garcia  
Pam & Richard Earle  
Kevin Finora  
Patricia J. Fleming (FBG) Fund at  
Toronto Foundation  
John & Susan Goddard  
Ray Hogg & Gerald Michaud  
Kent James  
The Norman and Margaret Jewison  
Charitable Foundation  
Lucille & Urban Joseph, O.C.  
Elaine Kierans & Shawn McReynolds  
Scott Lauder  
Victoria Lee & Philip Hebert  
Ann Leese & Irwin Rotenberg  
Linda Lewis & Lorie Cappe  
Patti & John Loach  
Jefferson & Sally Mappin  
Mitchell Marcus & Orrin Wolpert  
Ian McAuley  
Randy McAuley  
Bart Nickerson  
Opolsky Family  
The Pottruff Family Foundation  
Anne & Jeffery Schwartz  
Mike Scott  
Charlie Seminero  
Gregory & Crystal Smith  
Richard Sniderman & D'Arcy Robert  
Jason Spetter  
Marg Steed & Wayne Atkinson  
Martin R. Wasserman  
Dr. Rhonda Zwingerman & Jeremy  
Opolsky

## LEAD PLAYER (\$750-1499)

The Pat & Tony Adams Freedom Fund  
for the Arts  
Sara & Michael Angel  
Earl Bederman & Ann MacPherson  
Karen Cheah  
Linda Chu & John Donald  
Bruce Dean & Robert Hall  
Don Deboer & Brent Vickar  
Annie & Rich English  
Julia & Curtis Gallagher  
Steven Hurowitz & Diane Osak  
Blake Hutcheson  
Kathy Kacer & Ian Epstein  
David M Kaplan Medicine Professional  
Corporation  
ML & JK  
Paul, Jaclyn & Michelle Marcus  
Marcia McClung  
David Montgomery  
In Memory of Karen Sharf  
Robert Sherrin  
Jennifer Webster  
Carole Winberg  
Nan and Jack Wiseman Family Fund at  
the Jewish Foundation of Greater  
Toronto  
Brenda Wolpert

Cynthia Zimmerman  
In Honour of Hartley Zwingerman

## FEATURED PLAYER (\$350-749)

Anonymous  
Janis & Dave Auster  
Dianne Azzarello & Steve Wilton  
John Bailey  
Peter Bakogeorge & Christine Mushka  
Catherine Bate  
Guy Beaudin  
David Bell  
Scott Belton & Jessica Leeder  
Daniel Brown  
Norman Buchanan  
Robert D. Cook  
Stephen Farb & Esther Yermus  
Louise Ferri & Brian Monti  
Brian Fior  
William Flanagan & Saffron Sri  
David Fuller  
Alex Galatis  
David Goldbloom & Nancy Epstein  
Sari Goldenberg  
Robert Gouley  
Bob & Kathy Grant  
Julia Grant  
Lawrence Herman  
Peter Herrndorf  
David & Donald Hilton  
Joe Hoja  
In Honour of Kent James  
Lorraine Kelly  
Ken Kirsh  
Michael Kleinman  
Brian Knudsen  
Dana Lafarga  
Lee Lamothe  
Jillian & Mark Lebovits  
Linda Lee  
Kathy & Becky Liddle  
Kimberly Liu  
Adrian M. Macdonald  
Anne Matlow & John Bohnen  
In Honour of Mitchell Marcus  
Mark McAuley  
Shawn McCarthy  
Cindy & Ed Nowina  
Nancy Pencer  
Kerry Pond  
Sam & Joseph Rosenthal  
Gretchen & Donald Ross  
Andra & Marc Rubin  
Annalee & Brian Schnurr  
Penny Shore  
Professor Julie Silver  
Amanda & Scott Sinclair  
Mary Sinclair  
David St. Bernard  
John Stacey  
Shannon Teskey & John Monczka  
Martha Tory  
Andrew Tremayne  
Jeff Walderman  
Jennifer Webster  
Paul Westlind

# THE MUSICAL STAGE COMPANY SUPPORTERS

## ENSEMBLE (\$100-349)

Anonymous (9)  
 Christie Acker  
 In Memory of Mary, Milton & Brad Allison  
 Adrienne Anderson  
 Rick Archbold & Rick Feldman  
 Elizabeth Asselstine  
 Henry Auster  
 Zoe Austin  
 Lawrence Axmith & Naomi Savage  
 Jeff Bale  
 Karen & Stephen Baron  
 Marie Baron  
 Kate Barris & Jim Betts  
 Victoria Bassett  
 Joan Belford  
 In Honour of Jilean Bell  
 Melissa Bencic & Jason Nichols  
 Harry Berholz  
 In Honour of P.J. Boosham  
 Theresa Boyle  
 Linda Bracken  
 Dianne Bradley  
 The Brayley Family Fund  
 John Brenko  
 Natasha Brijcoomar  
 Danielle Brown  
 Graham Brunke  
 Peter Caldwell & Stephen Mader  
 D. Callison  
 In Honour of Anne-Marie Canning (2)  
 Cameron Capel  
 Leonard & Cheryl Cappe  
 Boris Celis  
 Danny Chen  
 Rebecca Chesley  
 Joseph Paul Christie  
 Laurie Clark  
 Lyle Clark  
 Jerry & Sharon Cooper  
 In Memory of Jim Craig  
 Jan Crowley  
 Terry Crowley  
 In Honour of Patrick Dale  
 In Honour of Patrick & Gloria David  
 Rita Davies  
 James Davis  
 Jeanie Davis  
 Michael Dewson  
 Alan Dingle  
 Sholem Dolgoy  
 Kevin Doran  
 Lisa Douglas  
 Anne Dragicevic  
 In Memory of Norman Dvorkin  
 Ali & Josh Engel-Yan  
 Tenio Evangelista  
 Angela Ferrante  
 Barbara Fingerote  
 Anne Fleming  
 Tim Fort  
 Murray D. Foster  
 Don & Wendy Fraser  
 Amiel Gladstone  
 In Honour of Susan Goddard  
 Elaine Gold  
 Catherine Graham  
 Tim & Samantha Grant  
 Robert Green  
 Grosskleg Family  
 Doreen Gryfe  
 Jay Haddad  
 Gail Hakala  
 Jennifer Hardy  
 Lesley Harmer  
 Nancy Hawkins  
 Katie Hermant  
 Ann Hodges  
 In Honour of Robyn Hoja  
 Roslyn Holden  
 Simon & Rosemary Houpt  
 Brett House  
 Kathy Hoy  
 Pam Hrick  
 Ilene Hyman  
 Dara & Lorne Indig  
 Mark Irvine  
 In Memory of Kenneth Roy Jacob  
 In Memory of Harry & Jean Jankura  
 Alicia Jeffery & Neil Foster  
 Susan & Liman Jegins  
 Robert Johnston  
 Rayna Jolley  
 Debbie Kassirer & Glenn French  
 Lynn & Aubrey Kauffman  
 Heather Kertland  
 Jeffrey Knox & Jen Sutherland  
 Franci Kussner  
 Jordan Laffrenier  
 In Honour of Spencer Lanthier  
 Joan Lasley  
 Brenda Lazare  
 CG Leatherdale  
 Gina Lee  
 Judith & Harvey Levkoe  
 Barry Lipson  
 Ken Lipson  
 Kevin Long  
 Leah-Ann Lymer  
 Liane Macdonald  
 Megan MacKeigan  
 Alexandra MacLennan  
 Mira MacLeod  
 In Honour of Larry and Marilyn MacNeill  
 David MacNicol  
 Andrew Mainprize  
 Ruth Manchee Kenins  
 Elizabeth Manson  
 Susan Marcus & Rozanne Grimard  
 Ruth & Harold Margles  
 Ken Marple  
 A.R. Mason  
 Rose Mastracci  
 Edward Mathewson  
 Pat & John McCormack  
 Robert McLaren  
 David McMullen  
 Julie Michailidis  
 Wendy Millar & Mark Dawson  
 In Honour of Aiden Moore  
 The Rev. Marili Moore  
 Joy & Eddy Morassutti  
 In Honour of Erika Morey  
 Jeff Morris  
 Michael Murphy & Robert Stephen  
 Carole & Richard Murzin  
 Laraine & Neil Naft  
 Lindsay Naft  
 Briane Nasimok  
 Vanessa Naughton  
 S. Nevills  
 Sharon Okuno  
 Rick Orr  
 Hans & Carol Paabor  
 Shelagh Paul  
 Felicia & Ante Pavlovic  
 Larry Peloso & Andy Neilson  
 Aliisa Percival  
 Michael Pezzack  
 Jo Ann Pynn  
 Lola Rasminsky  
 Luke Anthony Reece  
 Jolene Reid  
 Adele & George Robertson  
 Andrea Robertson  
 D & F Robinson  
 Cole Rodness  
 In Honour of Suzy Rodness (2)  
 Michael Rosenbluth & Ronni Rosenberg  
 Corey Ross  
 Donna Rouzaud  
 Erin Schachter  
 Jennifer & Noah Schein  
 Steven Schipper  
 Gayla & Ken Schwartz  
 Elizabeth Sheffield  
 Don Sider  
 Jason & Konrad Sigala  
 Suzanne Simzer  
 Michael Sinclair  
 David & Marlene Smith  
 Saralee Smolkin  
 Sheryl Smolkin & Joel Troster  
 In Honour of Chris & Debbie Sobolewski  
 Michael & Brenda Somer  
 Deborah Staiman  
 Jennifer Stein  
 Voy Stelmaszynski  
 Jean Stephen  
 Carol Strom & John Migicovsky  
 Vinetta Strombergs  
 Ross & Ann Stuart  
 Beth Sulman  
 Merrill Swain  
 Almos Tassonyi  
 Leonie Thelwell  
 David & Elizabeth Thompson  
 Richard M. Thomson  
 Michael Trent  
 Roslyn Tsao  
 Robert Wallace  
 Laura Webster  
 Linda Weir  
 Scott Werry  
 Howard Wetson  
 In Memory of Mary Wichman  
 In Memory of Gregory Williams  
 Marni Whitaker  
 Adam White & Robert Allan  
 Christopher White  
 Heather Wilson  
 Sarah Wilson  
 Joy Wineberg  
 Susan Wolburgh Jenah  
 Debby Wright  
 The Yee Family  
 Mary Young Leckie & Keith Leckie  
 Hersh Zeifman  
 Lilie Zendei  
 Marc Zwelling & Judith M. Adam  
 Connie & Hartley Zwingerman  
 In Honour of Hartley Zwingerman

\*Multi-year giving program.

These listings are current as of May 25, 2021 and we have made every effort to ensure appropriate recognition. If, however, your name has been accidentally omitted, listed incorrectly, or misspelled, please contact Althea at [altheabakogeorge@musicalstagecompany.com](mailto:altheabakogeorge@musicalstagecompany.com). We apologize in advance for any inconvenience this may cause.



# Nu-Trend Construction

INSURANCE CLAIM SPECIALISTS

Nu-Trend Construction is proud to continue our support of world class performances presented by The Musical Stage Company.



[WWW.NTCCANADA.COM](http://WWW.NTCCANADA.COM)



416-747-1613



[info@ntccanada.com](mailto:info@ntccanada.com)



[@NuTrendConstruction](https://www.facebook.com/NuTrendConstruction)



[@NTCCANADA](https://www.twitter.com/NTCCANADA)

IN ASSOCIATION WITH  
**DREAM IN HIGH PARK** by canadianstage

COMING UP AT  
**THE MUSICAL  
STAGE CO.**



# BLACKOUT

BOOK BY  
STEVEN GALLAGHER

MUSIC & LYRICS BY  
ANTON LIPOVETSKY



THE MUSICAL STAGE COMPANY RETURNS TO THE STAGE WITH

## A NEW CANADIAN MUSICAL

BY TWO OF CANADA'S MOST EXCITING VOICES!

SUMMER 2021



FOR MORE INFORMATION AND TICKETS, VISIT:

**WWW.MUSICALSTAGECOMPANY.COM**