

2021/22



UNCOVERED

THE MUSIC OF DOLLY PARTON

MUSIC SUPERVISION BY **REZA JACOBS**

BEGINS STREAMING DIGITALLY
NOVEMBER 24

PRODUCED BY

**THE MUSICAL
STAGE CO.**

#UNCOVERED


UNCOVERED
PRODUCING
PATRONS

Anonymous

UNCOVERED
LEADING
LIGHTS

**The Haynes-Connell
Foundation**

FUNDING
PROVIDED
BY

Ontario 

MUSICALSTAGECOMPANY.COM



Their Someday[®] is the freedom to pursue their passion.

The hard work, perseverance and vision of emerging artists demonstrate the power of having – and the joy of realizing – a Someday[®]. Together with programs like the apprentice program at The Musical Stage Company, we support a diverse range of Canadian talent in communities across the country through the RBC Emerging Artists Project.

Visit [rbc.com/emergingartists](https://www.rbc.com/emergingartists)



WELCOME TO UNCOVERED: THE MUSIC OF DOLLY PARTON

Welcome back to UNCOVERED!

At The Musical Stage Company, the Fall has always been synonymous with 'UNCOVERED season'. Thus, it is with tremendous joy, that we welcome you to the 15th edition of our annual signature concert.

In thinking about what the focus of UNCOVERED would be as it returns to a live format, Dolly Parton emerged as the natural fit; her iconic songs are filled with joy, hope and love. She has changed the world as a pioneering feminist, a rags-to-riches business phenomenon, and an LGBTQ+ ally. Dolly exemplifies generosity, kindness & love – qualities that we need in our heroes, now more than ever.

A year of isolation has given UNCOVERED even greater momentum, as we examine iconic pop songs and breathe new life into them in a way that makes them resonate anew for the current moment. Last year's digital UNCOVERED: NOTES FROM THE HEART reached more people than ever before and introduced the glorious arrangements of Reza Jacobs and Canadian artists to international audiences.

This year we are delighted to be sharing UNCOVERED: THE MUSIC OF DOLLY PARTON with a digital experience, showing the magic of what we captured live at Koerner Hall. This enables us to share the talent and originality of what audiences saw, with people across the globe. Tonight, we invite you to relive the live experience online and to share the gift of UNCOVERED with friends and loved ones.

While this year's audience experience looks different from years past, we know that the power of music and great performances will transcend all of the strangeness of the current moment, and remind us all, how it's better with music.

Enjoy the show!



A handwritten signature in black ink that reads "Mitchell Marcus".

MITCHELL MARCUS (HE/HIM)
THE ROGER & KEVIN GARLAND
CHIEF EXECUTIVE OFFICER,
THE MUSICAL STAGE COMPANY



A handwritten signature in black ink that reads "Ray Hogg".

RAY HOGG (HE/HIM)
ARTISTIC DIRECTOR,
THE MUSICAL STAGE COMPANY

LAND ACKNOWLEDGEMENT

As we reflect on the opportunity to return to making music together in Tkaronto, we want to recognize the original caretakers of this land - both recorded and unrecorded - who have been gathering and making music on this land for generations.

UNCOVERED is being performed & filmed in the “Dish With One Spoon Territory.” The Dish With One Spoon is a treaty between the Anishinaabe Nation, Mississaugas of the Credit, and Haudenosaunee Confederacy that bound them to share the territory and protect the land. Subsequent Indigenous Nations and peoples, colonial settlers, and all newcomers, have been invited into this treaty in the spirit of peace, friendship, and respect.

May the reunion of our voices through song remind us of our urgent responsibility to repair the history of injustice and damage that has been done, and continues to be inflicted upon Turtle Island (colonially Canada’s Indigenous peoples, by its settlers. For more information on how you can be a part of building a more equitable future for Turtle Island’s Indigenous peoples, visit The Truth and Reconciliation Commission of Canada by [clicking here](#).

SPECIAL THANKS

Mary Spyrakis
Patrick Stewart

Brianna Gorsline
Bad Hats Theatre

Benjamin Kersey
David Bell

An additional thank you to our live **UNCOVERED** team for their work at Koerner Hall:

Paul Zivontsis
(RCM Production Manager)
Ian Harper
(Head Audio)

Kim Trollope
(Head Stage)
Heather Richards
(Head Lighting)

Dayna Dickenson
(Head Video)
Raul Rodriguez
(Head Monitors)

ACTRA

The Musical Stage Company engages, under the terms of the LED Guidelines, performers who are members of The Alliance of Canadian Cinema, Television and Radio Artists (ACTRA). This production was made possible with the Generous Support of ACTRA Toronto and the CMPA.



The Musical Stage Company engages, under the terms of the Independent Theatre Agreement, actors and stage managers who are members of the Canadian Actors' Equity Association (CAEA).



The musicians engaged in this production are members of the Toronto Musicians' Association (TMA) Local 149 of the Canadian Federation of Musicians and American Federation of Musicians.



The Musical Stage Company is a member of the Toronto Alliance for the Performing Arts (TAPA).

The Musical Stage Company presents

UNCOVERED

THE MUSIC OF DOLLY PARTON

THE DIGITAL EXPERIENCE

STARRING

JULLY BLACK†

BEAU DIXON

SARA FARB †

HAILEY GILLIS

KELLY HOLIFF

ANDREW PENNER

BAND

Piano &
Conducting
ADAM SAKIYAMA

Acoustic /
Electric Bass
JUSTIN GRAY

Drums &
Percussion
JAMIE DRAKE

Violin
MIRANDA
MULHOLLAND

Additional Guitar
ANDREW
PENNER

Additional Guitar
& Harmonica
BEAU DIXON

CREATIVE & PRODUCTION TEAM

Music
Supervision
REZA JACOBS

Concept &
Staging
FIONA SAUDER

Music
Direction
ADAM SAKIYAMA

Stage
Management
LISA HUMBER

COVID-19 & Production
Coordination
ROBYNNE HARDER

Copyist Work
JONATHAN
CORKAL-ASTORGA

Quote
Curation
JASON SPETTER

Apprentice
Stage Management
JOEY LAU

Lighting
Design
MATT BIRNBAUM

Sound
Engineering
PATRIC MCGROARTY

Sound Mixing & Mastering
(Synthesis Sound & Immersive Mastering)
JUSTIN GRAY

Videography
& Editing
FRED YURICHUK

Videography
INGRID JOHANSSON
& BENJAMIN ROUSE

Live Opening Act
Performances
EVA FOOTE

Digital Experience
Hosting
ANIKA JOHNSON

ORCHESTRATIONS & ARRANGEMENTS BY REZA JACOBS AND CREATED COLLABORATIVELY WITH
INPUT FROM ALL ARTISTS INVOLVED IN UNCOVERED.

† The 2021-22 Mark & Cherie Daitchman Featured Performers

* The Fine Furneaux Director of Music

SONGS FEATURED IN UNCOVERED

SONGS ARE LISTED IN ALPHABETICAL ORDER

9 to 5

Words & Music: Dolly Parton
Copyright: Sony Music Publishing
SARA FARB, HAILEY GILLIS, KELLY HOLIFF

Coat of Many Colors

Words & Music: Dolly Parton
Copyright: Sony Music Publishing
SARA FARB

Here I Am

Words & Music: Dolly Parton
Copyright: Sony Music Publishing
KELLY HOLIFF

Here You Come Again

Words & Music: Barry Mann & Cynthia Weil
Copyright: Sony Music Publishing
HAILEY GILLIS

Islands In The Stream

Words & Music: Barry, Robin & Maurice Gibb
Copyright: Universal Music Publishing
JULLY BLACK, BEAU DIXON, SARA FARB,
ANDREW PENNER

I Will Always Love You

Words & Music: Dolly Parton
Copyright: Sony Music Publishing
JULLY BLACK

Jolene

Words & Music: Dolly Parton
Copyright: Sony Music Publishing
JULLY BLACK

Joshua

Words & Music: Dolly Parton
Copyright: Sony Music Publishing
BEAU DIXON, ANDREW PENNER

Light Of A Clear Blue Morning

Words & Music: Dolly Parton
Copyright: Sony Music Publishing
FULL CAST

Mule Skinner Blues

Words & Music: Jimmie Rodgers & George Vaughn
Copyright: Peermusic
ANDREW PENNER

Tennessee Mountain Home

Words & Music: Dolly Parton
Copyright: Sony Music Publishing
FULL CAST

Two Doors Down

Words & Music: Dolly Parton
Copyright: Sony Music Publishing
BEAU DIXON

PERFORMANCE NOTES

- All songs appearing in **UNCOVERED: THE MUSIC OF DOLLY PARTON** are used with explicit authorization from each artist's respective music publisher. All Rights Reserved.
- The text featured in **UNCOVERED: THE MUSIC OF DOLLY PARTON** has been curated from actual quotes spoken by Dolly Parton.
- Background vocals co-created and performed by Sara Farb, Hailey Gillis, & Kelly Holiff.

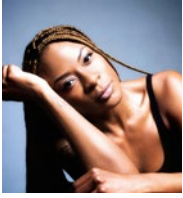


Running time is approximately 65 minutes.



Any video/audio recording of this production is strictly prohibited.

PERFORMER BIOGRAPHIES



JULY BLACK (she/her) Performer

The Mark & Cherie
Daitchman Featured
Performer

For The Musical

Stage Company: **CAROLINE OR CHANGE** (2020); 2 seasons of **UNCOVERED**.

July Black is 'Canada's Queen of R&B/ Soul' and a true Canadian icon. She has been named as one of 'The 25 Greatest Canadian Singers Ever' (CBC Music) & is a platinum-selling recording artist & performer. July is also a Juno Award, Gemini Award, Toronto Theatre Critics Award & Dora Mavor Moore Award recipient, and a television & musical stage actress of resolute faith & conviction.



BEAU DIXON (he/him) Performer

For The Musical
Stage Company:
PORCHSIDE SONGS

(2020); **PASSING STRANGE** (Obsidian Theatre co-production); **CAROLINE, OR CHANGE** (2012).

Beau is a self-taught, multi award-winning Actor, Composer, Playwright, Sound Designer & Music Director. Selected theatre credits: **GUYS 'N' DOLLS**, **HMS PINAFORE** (Stratford Festival); **GHOST QUARTET** (Crow's Theatre); **THE COLOR PURPLE** (Neptune Theatre); **MA RAINEY'S BLACK BOTTOM** (Soulpepper Theatre). Selected writing credits: **BLOOM: A ROCK 'N' ROLL FABLE** (4th Line Theatre); **BENEATH**

SPRINGHILL (Arts Club/ Festival Players). Selected musical direction; **PIPPIN** (Sheridan College); **FREEDOM CABARET** (Stratford Festival). Nominations & awards: Two Dora Mavor Moore Awards, Two Toronto Critics Awards, Calgary Critics Award, Betty Mitchell nomination & a Dora Mavor Moore nomination. His music is available on iTunes.

www.beaudixon.com



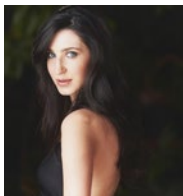
SARA FARB (she/her) Performer

The Mark & Cherie
Daitchman Featured
Performer

For The Musical

Stage Company: **PORCHSIDE SONGS** (2021); 12 seasons of **UNCOVERED**; Medium Allison in **FUN HOME** (Mirvish co-production - Dora nomination & TTCA winner); **REFRAMED**; **EDGES**; **KELLY v. KELLY**.

Sara Farb is known for Delphi in **HARRY POTTER AND THE CURSED CHILD** on Broadway; 5 seasons at Stratford (Juliet, Anne Frank, Cordelia, many others); Brigid in **THE HUMANS** (Canadian premiere at Citadel/Canadian Stage); productions at Soulpepper, Theatre Calgary, Tarragon, Theatre Passe Muraille, Segal Centre, YPT, & others. Sara & Britta Johnson's original musical, **KELLY v. KELLY**, was postponed due to Covid but will hopefully see a full production soon.



HAILEY GILLIS

(she/her)
Performer

For The Musical
Stage Company:
PORCHSIDE SONGS

(2020); 2 seasons of **UNCOVERED**;
ONEGIN (with National Arts Centre &
The Arts Club).

Recent Credits: **GHOST QUARTET**
(Crow's Theatre), **ROSE, STEINBECK**
THROUGH SONG (Soulpepper Theatre);
THE INVISIBLE (Catalyst/Vertigo
Theatre); **HEDDA GABLER** (Necessary
Angel/Canadian Stage); **ROMEO**
AND JULIET, THE MERRY WIVES OF
WINDSOR (Bard On The Beach); **SPOON**
RIVER, THE DYBBUK, MARAT/SADE,
BLOOD WEDDING, THE CRUCIBLE,
THE THIRST OF HEARTS, THE DEAD,
ALLIGATOR PIE, IDIOT'S DELIGHT
(Soulpepper Theatre); **JESUS CHRIST**
SUPERSTAR, ON THE ROAD WITH
DUTCH MASON (The Confederation
Center For The Arts); **GREASE, EVITA,**
THE LITTLE MATCH GIRL (Theatre
Aquarius). Other credits: **TRIPLE**
SENSATION Season 2, Top 6 (CBC),
Graduate (Soulpepper Academy), BA
Honours Degree (University Of Toronto),
Acting Diploma (Sheridan Institute Of
Technology).



KELLY HOLIFF

(she/her)
Performer

For The Musical
Stage Company:
9 seasons of
UNCOVERED.

Kelly is thrilled to be back with her The
Musical Stage Company family, for her
10th season of **UNCOVERED**! Kelly is a

theatre, cabaret & concert performer
based in Toronto. Highlights; touring
with Colm Wilkinson, opening for
President Bush & President Clinton;
voice for The Heart & Stroke
Foundation. Credits include: Brooke
in **NOISES OFF** (Mayfield); Captain
Hook in **PETER PAN** (Neptune
Theatre); Aldonza/Dulcinea in **MAN**
OF LA MANCHA; Ursula in **LITTLE**
MERMAID (Drayton); **TAKING THE A**
TRAIN (Soulpepper); **ANNE OF GREEN**
GABLES (Charlottetown); **KNISHES &**
GRITS (Harold Green Jewish Theatre).



ANDREW

PENNER
(he/him)
Performer

For The Musical
Stage Company:

PORCHSIDE SONGS (2020); 3 seasons
of **UNCOVERED**.

Andrew is an award-winning musician,
performer, composer, sound
designer, music director & producer.
He can be heard on over 50 albums
& has performed throughout North
America & Europe. Theatres include:
Soulpepper, Crows, Stratford Festival,
Canadian Stage, Obsidian, NAC,
Native Earth, The Theatre Centre.
FILM/TV work includes: **ONE WEEK**;
SMALL TOWN MURDER SONGS; **THIS**
BEAUTIFUL CITY; **EADWEARD**; **LOST**
GIRL. He is a founding member of
the award winning, multidisciplinary
collective, **Kitchenband** who create
stories inspired by obscure history &
geography. He is a member of the bands
Harrow Fair & Sunparlour Players.
Andrew lives in Toronto, Canada with his
wife & 3 sons.



Wherever business takes you



The business landscape has changed. No matter the industry sector, market location or specific areas of business you need addressed, MNP is there... where and when you need us.

John Hughes, CPA, CA | 416.515.3842 | john.hughes@mnp.ca

[MNP.ca](https://mnp.ca)

BAND BIOGRAPHIES



**ADAM
SAKIYAMA**
(he/him)
Music Director,
Pianist, & Conductor

For The Musical Stage Company: **REPRINT; NEXT TO NORMAL** (Mirvish Co-Production); **DR. SILVER: A CELEBRATION OF LIFE**.

Adam Sakiyama is a music director & composer. Recent theatre credits include **SUNDAY IN THE PARK WITH GEORGE** (Eclipse Theatre), **SONGS FOR A NEW WORLD** (Theatre Sheridan), **STUPIDHEAD!** (Outside the March), **Billy Elliot** (Stratford). Composing credits include **QUENCH** (Axon Interactive) and **IN BETWEEN** (National Ballet of Canada). Songwriter & Arranger for **SUPER SIMPLE SONGS**, one of the most watched educational channels on YouTube. Currently writing the score for **MACBETH** (Ballet Kelowna), premiering spring 2022.



JUSTIN GRAY
(he/him)
Acoustic/Electric
Bass, Sound
Mixing (Synthesis
Sound) & Mastering
(Immersive
Mastering)

For The Musical Stage Company: **NEXT TO NORMAL; FUN HOME**; 7 seasons of **UNCOVERED**.

Justin Gray is a Toronto-based award-winning bassist, composer, producer and educator. His main influences include jazz, R&B, Indian classical and world music. Justin is currently on faculty at Humber, Sheridan and Centennial College. Throughout this career, Justin has received a number awards and distinctions, most recently a nomination for Instrumental Solo Artist of the Year at the Canadian Folk Music Awards. In 2010, Justin invented and co-created a new hybrid instrument, the Bass Veena, and is now emerging as the first artist to perform on it worldwide. Justin currently leads his own contemporary world music ensemble, **JUSTIN GRAY & SYNTHESIS**, which released their debut album **NEW HORIZONS** in 2017.

www.JustinGraySynthesis.com



JAMIE DRAKE
(he/him)
Drums & Percussion

For The Musical
Stage Company:
14 seasons of

**UNCOVERED; NEXT TO NORMAL; FUN
HOME; LIFE AFTER; EDGES.**

Selected additional credits: **LONDON ROAD** (Canadian Stage); **MATILDA** (Mirvish); **SANCTUARY SONG** (NAC); **PINOCCHIO** (YPT); **CANDIDE, INTO THE WOODS** (TIFT); and music for the Shaw Festival. Known for his stylistic diversity, Jamie is a percussionist, drummer, and composer/creator who received his Doctorate of Musical Arts from the University of Toronto. As a member of **TORQ PERCUSSION QUARTET**, he has been a featured soloist with the Toronto Symphony, Orchestre Symphonique de Montréal and Buffalo Philharmonic. He is the percussionist for the renowned **Hamilton Children's Choir**, has performed with a variety of singers including **Ron Sexsmith, Heather Bambrick** and **Sharron Matthews**, and plays in the Motown band **The Big Sound**. Jamie is a proud Yamaha Canada artist. [@opus_32](https://www.instagram.com/opus_32)
jamiedrake.ca



**MIRANDA
MULHOLLAND**
(she/her)
Violin

For The Musical
Stage Company:
DEBUT.

Miranda Mulholland is a JUNO nominated singer and fiddler. Her touring and recording credits include **Harrow Fair, Great Lake Swimmers, Bowfire, The Jim Cuddy Band** and many, many more. She has performed on over 70 albums, as well as TV and film. She is the owner of the boutique record label, Roaring Girl Records, and is the Founder and Artistic Director of Muskoka Music Festival. In recent years, Miranda has emerged as one of the World's foremost Artist Advocates, championing fair remuneration for creators. Miranda is Vice Chair of the Board of Governors (Massey & Roy Thomson Halls).

www.mirandamulholland.ca

CREATIVE & PRODUCTION BIOGRAPHIES



REZA JACOBS

(he/him)

Music Supervision
The Fine Furneaux
Director of Music

For The Musical
Stage Company:

CAROLINE, OR CHANGE (2012 & 2020);
13 seasons of **UNCOVERED; FUN HOME;**
LIFE AFTER; and more.

Reza Jacobs is an award-winning music director, arranger, composer, and sound designer, known for his versatility in style and genre. Credits include composition and sound design for the Shaw Festival, Stratford Shakespeare Festival, Factory Theatre, Tarragon, Theatre Passe Muraille, Volcano Theatre, Cahoots Theatre, Luminato Festival, & Harbourfront's World Stage Festival. As Music Director he has won Dora Mavor Moore Awards for **LIFE AFTER** (Best Music Direction & Best Musical 2018); **LONDON ROAD** (Best Music Direction & Best Musical 2014); **CAROLINE, OR CHANGE** (Best Music Direction & Best Musical 2012); and **ASSASSINS** (Best Musical 2010). He has played Ted in **2 PIANOS 4 HANDS** (NAC, Globe, & Centaur) and has been the resident Canadian Music Director for Andrea Martin's one-woman show, **EVERYTHING MUST GO**.



FIONA SAUDER

(she/they)

Concept & Staging

For The
Musical Stage
Company: **BAAPII**
ROHO; One Song
Glory (2019 & 2020).

Fiona Sauder is an Ottawa born director, writer, performer & educator. As the Artistic Director of Bad Hats Theatre (Soulpepper Theatre's Associate Company), her work won multiple Dora Awards & their writing has entertained audiences globally. Her recent adaptation of **ALICE IN WONDERLAND** was released as a family musical film & played to 12,000+ audiences. Select directing credits: **HOLIDAY INN** (Shaw Festival, Asst. Dir. - Upcoming); **AFRO-PERUANA** (Canadian Stage); **SUNSHINE BOY** (Randolph College); **MAMMA MIA!**, **AMERICAN IDIOT**, **LES MISERABLES IN CONCERT** (YES Theatre); **LIFE IN A BOX** (Bad Hats Theatre - Dora Nomination for Outstanding Direction). As a performer she's had the pleasure of working with Canadian Stage, The Blyth Festival, Soulpepper Theatre, Young People's Theatre, Driftwood Theatre, & more. @fionasauder



LISA HUMBER

(she/her)

Stage Manager

For The Musical
Stage Company:
GREY GARDENS;
ELEGIES.

Lisa is a Toronto based Artist, Stage Manager, Producer & Musician.

Selected Stage Management credits include: **COME FROM AWAY**; **STRICTLY BALLROOM**; **THE HEART OF ROBIN HOOD**; **LES MISÉRABLES**; **WAR HORSE**; **GHOST STORIES**; **THE SOUND OF MUSIC**; & **DIRTY DANCING** (Mirvish Productions); **ALICE IN WONDERLAND** (Bad Hats Theatre); **BUTCHER** (Why Not Theatre & Mirvish Productions); **IT COMES IN WAVES** (PANAMANIA, bluemouth inc & Necessary Angel); **DANCE MARATHON** (bluemouth inc); **SLEEPING BEAUTY**; & **PETER PAN IN WONDERLAND** (Ross Petty Productions). She is the co-creator, co-producer, & co-host of the online talk show **CHECK IN FROM AWAY**, 1/4th the artistic core of bluemouth inc theatre company and her first music album is due for release in 2022. [@lisahumber](https://linktr.ee/lisahumber)
<https://linktr.ee/lisahumber>



ROBYNNE HARDER
(she/her)
COVID-19 & Production Coordinator

For The Musical Stage Company: 4 seasons of **UNCOVERED**; **One Song Glory** (2016) (Stage Manager).

Robynne Harder is a Toronto based director, producer, filmmaker, & amateur ukulele player. Credits include: **TO LOVE AN ARTIST, MEANT & EURYDICE** (Styx and Stones Productions, Director/Producer); **TRANSFERRING KYLE** (The InspiraT0 Festival, Director); **THE MILLENNIAL MALCONENT** (Tarragon Theatre, Apprentice Director). Robynne holds a B.F.A. from X University, & is a graduate of the Commercial Theatre Institute's producing intensive (New York). Robynne is the Production Manager of

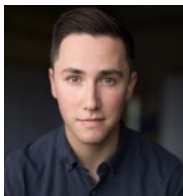
The School of Toronto Dance Theatre & Co-Creator & Co-Artistic Director of Styx and Stones Productions.



JOEY LAU
(she/her)
Apprentice Stage Manager

For The Musical Stage Company: **BLACKOUT** (Apprentice Stage Manager); **BAAPII ROHO** (Stage Manager).

Joey is a multidisciplinary artist born, raised & residing in Toronto, Canada. Her passions include theatrical management, arts education and creative development. Joey received her BFA from the Ryerson School of Performance in 2019 majoring in theatre production, with emphasis in stage management, scenic art and theatre administration; and with that, she has also completed minors in acting/dance studies & business. Her recent works include collaborations in education and/or design departments of Flato Markham Theatre, Living Arts Centre, Electric Moon Theatre Company, City Youth Players, Canadian Opera Company and designing the scenic décor of the premiering holiday rink for Toronto Union. Joey is currently a theatre production coordinator with education-technology company, Knowledgehook.



**JONATHAN
CORKAL-
ASTORGA (he/him)**
Copyist

For The Musical
Stage Company:

BLACKOUT; CAROLINE, OR CHANGE (2020)(Assistant to the Music Director); **REPRINT** (Accompanist/Copyist); **DR. SILVER: A CELEBRATION OF LIFE**; 2 seasons of **UNCOVERED** (Music Assistant); **RBC Apprentice Music Supervisor/Arranger** (2018-19); **One Song Glory** (2020)(Music Director).

Jonathan Corkal-Astorga is a Chilean-Canadian music director, copyist, accompanist and actor. An avid supporter of new theatrical works, he has been involved with the development of numerous new musicals, both on the music team and as a performer. He is currently on staff at Sheridan College and George Brown College, and is a graduate of Sheridan's Hon. Bach. in Music Theatre Performance. Originally from Saskatoon, he currently resides in Toronto with his cat, Chloe. He is forever thankful for his family in Chile and Canada for their support - saludos y abrazos a todos!



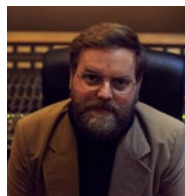
**MATT
BIRNBAUM**
(he/him)
Lighting Designer

For The Musical
Stage Company:

13 seasons of **UNCOVERED** (Lighting); **JOHN & JEN** (Assistant Stage Manager); **ELEGIES: A SONG CYCLE; A MAN OF NO IMPORTANCE** (Associate Producer).

Matt is thrilled to be joining The Musical Stage Company for his 14th season.

When he is not lighting these shows, Matt spends his days as the General Manager for the Harold Green Jewish Theatre Company. Many thanks to Mitchell for inviting him back year after year and much love to Ryla, Blake and Madison.



**PATRIC
MCGROARTY**
(he/him)
Sound Engineer

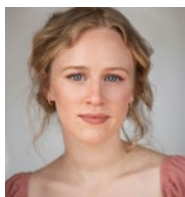
For The Musical
Stage Company:
DEBUT.

Born and raised in Toronto, Canada, Patric McGroarty is a Juno award winning audio engineer. Records he has worked on have been nominated for Junos, Canadian Folk Awards and Canadian Latin Music awards. He has mixed over 1,100 tv shows, 100 live-to-air radio concerts, live streamed over 150 concerts, and played on/ recorded/ been involved in some capacity 100+ records.



FRED YURICHUK
(he/him)
Videographer &
Editor

Fred is a Toronto-based videographer and photographer, working with projects that include music videos, theatre, lifestyle, fashion, travel, short film and documentary productions. Fred has worked with The Musical Stage Company for several years to produce many promotional videos and capture live performances.



EVA FOOTE
(she/her)
Livestream Prologue
Performer

For The Musical Stage Company: **UNCOVERED: NOTES FROM THE HEART; THE WORLD IS FOLKED.**

Eva Foote is an actor and singer-songwriter from Edmonton, Alberta. Growing up in a house full of bluegrass and folk music, she has always had a deep love for musical storytelling and writing songs. She is a graduate of the National Theatre School of Canada, trained in the Birmingham Conservatory, and most recently played Hermia in **A MIDSUMMER NIGHT'S DREAM** at the Stratford Festival. She is profoundly honoured to have been a 2019-20 recipient of The Syd & Shirley Banks Prize for Emerging Musical Theatre Artists alongside Kale Penny, and further honoured to be a part of this year's **UNCOVERED**. Her music is available on Spotify and Bandcamp.



ANIKA JOHNSON
(she/her)
Digital Experience
Host

For The Musical Stage Company: **REPRINT** (Co-Music & Lyrics); **DR. SILVER: A CELEBRATION OF LIFE** (Co-Writer & Composer); **LIFE AFTER** (Dramaturg & Performer).

Anika Johnson is a Dora winning composer and performer. Writing credits include: **BRANTWOOD** (Sheridan) with her sister Britta; **BLOOD TIES** (Next Stage/featured on Orphan Black) & **ONE SMALL STEP** (Toronto Youth Theatre) with Barbara Johnston; and **SUMMERLAND** (Toronto Fringe) with Barbara Johnston and Suzy Wilde. Anika was also the dramaturg for the critically-acclaimed American premiere of **LIFE AFTER (2019)** at The Old Globe in San Diego. Anika performed internationally with **WANNABE: A SPICE GIRLS TRIBUTE** and Corpus DanceProjects.



CIBC PRIVATE WEALTH

WE'RE SETTING THE STAGE FOR A BETTER TOMORROW



The arts are important to building rich, vibrant communities. That's why we're pleased to support Uncovered, presented by The Musical Stage Co.

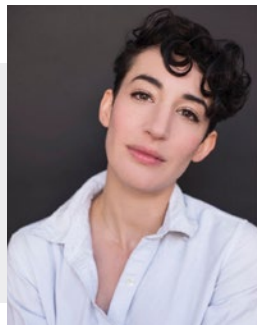
At CIBC it's our mission to help build vibrant and beautiful communities all across Canada.

The CIBC logo and "CIBC Private Wealth" are trademarks of CIBC, used under license.

AN INTERVIEW WITH SARA FARB

BY CAMERON VINDUA

We sat down with returning artist and performer Sara Farb to learn more about her experiences with our **UNCOVERED** concerts of the past, as well as adapting to this year's special edition of our signature annual concert, with both a live and digital performance.



As a long-time UNCOVERED artist, how have you prepared for the concert? How has this changed during the COVID-19 pandemic?

Nothing much has changed in my approach. It's usually a matter of acquainting myself with the artist's songbook as best I can before we start to get a sense of the songs we're gonna do.

Dolly's songs are less familiar to me than some of the past ones and man they're good songs, did you know?

What has become your favourite aspect of the UNCOVERED concert process?

Working with Reza; figuring out how we're gonna tell the story in each song together and building the pieces one at a time. We've had ones where it's all come really quickly and ones where I have literally lain on the floor crying from frustration.

The end result is always great. And he and I have such a nice shorthand at this point, it feels very intuitive and very pleasant.

What have you found to be most exciting about 'uncovering' and performing the catalogue of Dolly Parton?

As I said, these songs weren't very familiar to me, so getting to hear her work and understand what all the fuss is about has been a good thing. Seriously, did you know? How good the songs are? They're good songs.

How do you approach performing an in-person concert that will be turned into a film? What can audiences expect from the in-person experience?

They can expect a normal live show I think. I won't be changing anything. The point has always been telling these stories as clearly and dynamically as possible, so that's what I'll do.

If you could choose any artist that we haven't spotlighted yet to 'uncover', who would you choose and why?

Someone Canadian maybe. We've done some Canadians but not enough. Celine Dion is a no-brainer to me.

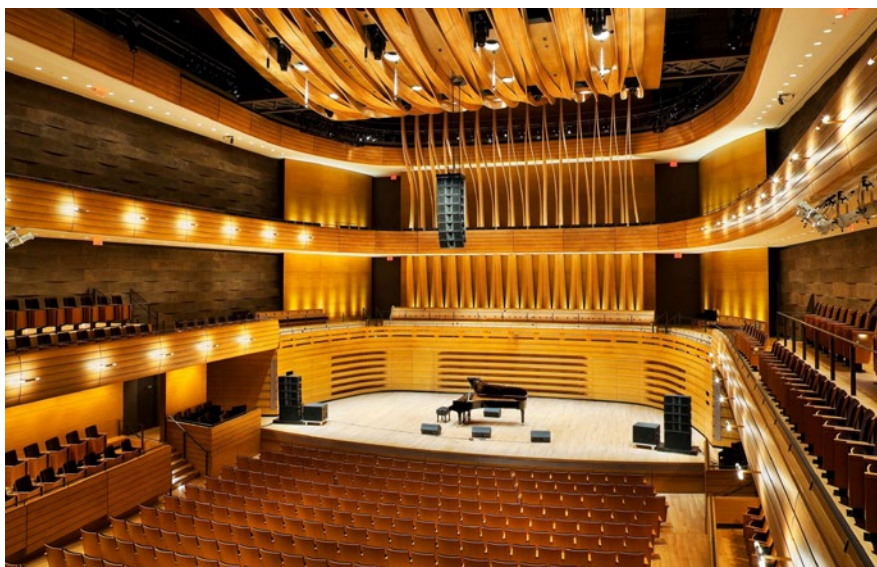


UNCOVERED is being offered as both an in-person experience and a digital concert this year. Do you think digital theatre will be a continued practice for arts organizations in a post-pandemic world?

I have no idea. I'll say probably? My concern is that it provides an excuse to not go out and attend theatre. Before, you either went to a show or you didn't, with some exceptions from larger-budget companies that could present shows digitally to wider audiences.

Theatre is now frequently experienced in one's home, and that's a hard thing to coax people away from, especially people who've been afraid for two straight years of convening in a public space. It's very tempting to avoid the chore and anxieties involved in leaving the house. If it does continue, my hope is that the digital content is done consciously, that is, not simply filming a production to be watched at home, but using the medium of film to its full advantage.

It's a hybrid of film and theatre that I think we were moving towards anyway, which is a cool thing. Just not at the expense or extinction of live theatre. I would like to continue to perform live in front of people without worrying how it's translating on camera.



(Top) Image of Sara Farb, UnCovered Rehearsals 2021. Photo by Dahlia Katz.

(Bottom) Image of Koerner Hall, courtesy of Royal Conservatory of Music.

THE MUSICAL STAGE COMPANY

THE MUSICAL STAGE CO.

is Canada's leading charitable musical theatre company. Established in 2004, we strive to make Canada a leader in musical theatre by telling our most important stories with music.

We believe it's better with music.

We are inspired by music's unique ability to viscerally affect people and are committed to cultivating experiences – onstage and off – that transform lives, build empathy and create community through musical theatre.

We incubate new Canadian musicals from development to production, investing in Canadian musical theatre writers and building national and international partnerships. Our musical productions – including award-winning contemporary musicals, world premieres and concerts – are seen live by 30,000 people over the 80+ nights that we are onstage annually in venues both traditional and surprising. To date, our work has been recognized with 105 Dora Award nominations, 23 Dora Awards

(including back-to-back Outstanding Musical Production awards in 2018 and 2019) and 19 Toronto Theatre Critics' Awards.

Our robust education programs develop the artists and audiences of tomorrow, offering musical theatre training that boosts self-confidence and self-expression for over 200 young people each year without cost to the participants. We also curate innovative musical programs in partnership with diverse organizations, maximizing the resonance of our work across disciplines and communities.

UP NEXT AT THE MUSICAL STAGE COMPANY:

The Musical Stage Company continues to offer online and in person experiences for artists, students and audiences all year-round. Learn more about our programming and get involved by visiting www.musicalstagecompany.com.

INTERACT WITH US

THE MUSICAL STAGE COMPANY'S BLOG: MUSICAL NOTES

Musical Notes is an online hub for discussions about the latest trends, developments, and gossip on musical theatre in Toronto and beyond. Including Chief Executive Officer Mitchell Marcus' blog, interviews with season artists, and more. Check out *Musical Notes*, a home for any musical aficionado. Visit us at www.musicalstagecompany.com/blog.

MUSICALSTAGECOMPANY.COM



info@musicalstagecompany.com



[@musicalstageco](https://www.instagram.com/musicalstageco)

Post your pictures & comments about UNCOVERED using #UnCovered

STAFF

EXECUTIVE

THE ROGER & KEVIN GARLAND
CHIEF EXECUTIVE OFFICER
Mitchell Marcus (he/him)

ARTISTIC

ARTISTIC DIRECTOR
Ray Hogg (he/him)

ARTISTIC PROGRAM
ASSOCIATE
Patricia Cerra (she/her)

ARTISTIC DEVELOPMENT
ASSOCIATE
Victoria Wang (she/her)

DEVELOPMENT

EXECUTIVE DIRECTOR,
ADVANCEMENT
Kate Supleve (she/her)

ACCESSIBILITY MANAGER &
DEVELOPMENT ASSOCIATE
Alethea Bakogeorge (she/her)

DEVELOPMENT ASSOCIATE
Cassandra Di Felice (she/her)

MARKETING

DIRECTOR OF MARKETING
& ENGAGEMENT
Victoria Barber (she/her)

MARKETING &
EVENTS ASSOCIATE
Katie Gorham (she/they)

MARKETING ASSOCIATE
Cameron Vindua (he/they)

EVENTS & AUDIENCES
SERVICES ASSOCIATE
Nick Fassbender (he/they)

GRAPHIC DESIGN
Sherpa Creative

PUBLICITY
**Suzanne Cheriton &
Jenn Perras,
Red Eye Media**

PRODUCTION & OPERATIONS

MANAGING DIRECTOR
Paul Beauchamp (he/him)

PRODUCER
Robyn Hoja (she/her)

ACCOUNTANT
Jenny Cheng (she/her)

ASSOCIATES

EXECUTIVE PRODUCER
David Daniels

THE FINE FURNEAUX
DIRECTOR OF MUSIC
Reza Jacobs (he/him)

ARTISTIC ASSOCIATE
Robert McQueen (- / -)

ARTISTIC ASSOCIATE
Kevin Wong (he/him)

BOARD OF DIRECTORS

CO-CHAIR
Patrick David

CO-CHAIR
Megan Deeks

TREASURER
Randy McAuley

SECRETARY
Ian McAuley

Dave Auster

Daren Herbert

John Hughes

David Kaplan

Catherine McCartney

Bart Nickerson

Paul Orlander

Tisha Rattos

Suzy Rodness

Celia Smith

Lucy White

Rhonda Zwingerman

ADVISORY COUNCIL

Jordan Banks

William J.S. Boyle C.M.

Linda Chu

David Daniels

Roger Garland C.M.

Lucille Joseph

Supporting
Canadian
talent, **locally.**



BMO



BMO is proud to sponsor
The Musical Stage Company
and its **High Park Programming.**

**THE MUSICAL
STAGE CO.**

*Salutes Our UnCovered
Sponsors & Supporters*

Producing Patrons

Anonymous

Leading Lights

The Haynes-Connell Foundation

Funding Provided By

Ontario 

**Artist Sponsor for
Jully Black & Sara Farb
Mark & Cherie Daitchman**

*Thank you for bringing this
performance to life!*

WE WILL ALWAYS LOVE YOU!



Donors are the heartbeat of The Musical Stage Company.

From the bottom of our Dolly-lovin' hearts, we want to thank y'all for your generosity and steadfast belief in what we do.

After all, it's better with donors.

For more information about donations, [click here](#) or contact Cassandra Di Felice, Development Associate, at (416) 927-7880 ext. 233.

OUR 2021-22 SPONSORS

GOVERNMENT SUPPORTERS



Canada Council
for the Arts
Conseil des arts
du Canada



ONTARIO ARTS COUNCIL
CONSEIL DES ARTS DE L'ONTARIO
an Ontario government agency
un organisme du gouvernement de l'Ontario



TORONTO
ARTS
COUNCIL
FUNDED BY
THE CITY OF
TORONTO



UNCOVERED: THE MUSIC OF DOLLY PARTON SPONSORS

UNCOVERED PRODUCING PATRONS

Anonymous

UNCOVERED LEADING LIGHTS

The Haynes-Connell
Foundation

FUNDING PROVIDED BY



DIGITAL EVENING SPONSOR



PROGRAM & PRODUCTION SPONSORS

BLACKOUT PRODUCING PATRONS

The Don & Shirley
Green Family
Foundation

HIGH PARK PROGRAMMING



HIGH PARK PROGRAMMING

David Binet

HIGH PARK PROGRAMMING

Lucy White

MARQUEE



MUSICAL MOMENTS

William J.S. Boyle,
C.M.

NOTEWORTHY



ONE SONG GLORY

The Aubrey & Marla
Dan Foundation

RBC APPRENTICE PROGRAM



LEADING LIGHTS

AUBREY AND MARLA DAN FUND FOR NEW MUSICALS

The Aubrey & Marla
Dan Foundation

THE BANKS PRIZE

The Banks Family

CRESCENDO CLUB

Anne-Marie Canning

THE KATHLEEN C. FREEMAN LEADERSHIP DEVELOPMENT FUND

Kathleen & Dennis
Freeman

NOTEWORTHY

Andrew Gillespie

ONE SONG GLORY

Norine Rose

SEASON SUPPORTERS



The Catherine & Maxwell
Meighen Foundation

Metcalf
Foundation



The Musical Stage Company is a registered charity BN 86204 4146 RR0001. If you would like more information, please contact Kate Supleve at 416.927.7880 ext. 224 or katesupleve@musicalstagecompany.com

THE MUSICAL STAGE COMPANY SUPPORTERS

Special thanks to our sponsors, major supporters, Crescendo Club & Virtuosos – core builders of The Musical Stage Company who have committed to a multi-year donation.

SPONSORS & MAJOR GIFTS*

Anonymous (2)
The Banks Family
David W. Binet
BMO
William J. S. Boyle, C.M.
Anne-Marie Canning
CIBC
Mark & Cherie Daitchman
The Aubrey and Marla Dan Foundation
Kate Alexander Daniels & David Daniels
Penny Fine & Hugh Furneaux
Kathleen & Dennis Freeman
Roger & Kevin Garland
Andrew Gillespie
The Government of Ontario
The Don & Shirley Green Family
Foundation
Hal Jackman Foundation
The Haynes-Connell Foundation
Sheryl & David Kerr
Sarah & David Macdonald
Catherine McCartney Cadogan/Karen
Tanz
The Catherine & Maxwell Meighen
Foundation
Metcalf Foundation
MNP
Linda & Chris Montague
RBC Foundation
Norine Rose
TD Bank Group
Lucy White

CRESCENDO CLUB (\$5000+)*

LEADING LIGHT:

Anne-Marie Canning
Marsha & Aubrey Baillie Fund at Toronto
Foundation
Beauchamp-Winskell Family
Bulmash-Siegel Fund
Linda Chu & John Donald
Patrick David & Michael Smith
Jim Fleck
Howard, Barclay & Associates
In Memory of Jake Kennedy
Gary & Margot Marcus
Leanne & David Matlow Family Fund at
the Jewish Foundation of Greater
Toronto
Noel Mowat
Paul Orlander & Helayna Shekter
Len & Suzy Rodness
Gary Rogers
Sherry Shannon-Vanstone
Celia M. Smith
Ellen & Les Wallace

VIRTUOSOS (\$1500+)*

Jennifer Angel & Eric Birnberg
Anonymous
Gail & George Anthony
Earl Bederman & Ann MacPherson
Diana Bennett & Spencer Lanthier
Brand Family Foundation at the Jewish
Foundation of Greater Toronto
Helen Burstyn, C.M.
The Paul Butler and Chris Black
Foundation at Toronto Foundation
Louis Charpentier & Robert Wakefield

Mitchell Cohen & Janice Lewis
The Peter & Eleanor Daniels Foundation
Mark & Susan Davis
Bruce Dean & Robert Hall
Marg & John Deeks
Megan Deeks & Simon Paabor
Philip Doyle & Yvonne Garcia
Pam & Richard Earle
Kevin Finora
Patricia J. Fleming (FBG) Fund at
Toronto Foundation
John & Susan Goddard
Ray Hogg & Gerald Michaud
Kent James
The Norman and Margaret Jewison
Charitable Foundation
Lucille & Urban Joseph, O.C.
Elaine Kierans & Shawn McReynolds
Scott Lauder
Victoria Lee & Philip Hebert
Ann Leese & Irwin Rotenberg
Linda Lewis & Lorie Cappe
Patti & John Loach
Jefferson & Sally Mappin
Mitchell Marcus & Orrin Wolpert
Ian McAuley
Randy McAuley
Bart Nickerson
Opolsky Family
The Pottruff Family Foundation
Anne & Jeffery Schwartz
Mike Scott
Charlie Seminerio
Robert Sherrin
Gregory & Crystal Smith
Richard Sniderman & D'Arcy Robert
Jason Spetter
Marg Steed & Wayne Atkinson
Martin R. Wasserman
Dr. Rhonda Zwingerman & Jeremy
Opolsky

LEAD PLAYER (\$750-1499)

In Honour of Justice Rosalie Silberman
Abella
The Pat & Tony Adams Freedom Fund
for the Arts
Sara & Michael Angel
Karen Cheah
Don Deboer & Brent Vicker
Annie & Rich English
Julia & Curtis Gallagher
Steven Hurowitz & Diane Osak
Blake Hutcheson
David M Kaplan Medicine Professional
Corporation
ML & JK
Paul, Jaclyn & Michelle Marcus
Marcia McClung
David Montgomery
Bart Nickerson
Kerry Pond
In Memory of Karen Sharf
Carole Winberg

Nan and Jack Wiseman Family Fund at
the Jewish Foundation of Greater
Toronto
Brenda Wolpert
Cynthia Zimmerman
In Honour of Hartley Zwingerman

FEATURED PLAYER

(\$350-749)

Anonymous
Dianne Azzarelli & Steve Wilton
John Bailey
Peter Bakogeorge & Christine Mushka
Guy Beaudin
David Bell
Scott Belton & Jessica Leeder
Daniel Brown
Norman Buchanan
In Honour of Anne-Marie Canning
Stephen Farb & Esther Yermus
Brian Fior
William Flanagan & Saffron Sri
David Fuller
Alex Galatis
David Goldbloom & Nancy Epstein
Sari Goldenberg
Robert Gouley
Bob & Kathy Grant
Julia Grant
Lawrence Herman
David & Donald Hilton
Joe Hoja
In Honour of Kent James
Lorraine Kelly
Michael Kleinman
Brian Knudsen
Dana Lafarga
Lee Lamothe
Jillian & Mark Lebovits
Shawn McCarthy
Cindy & Ed Nowina
Alisa Percival
Sam & Joseph Rosenthal
Andra & Marc Rubin
Annalee & Brian Schnurr
Penny Shore
Professor Julie Silver
Amanda & Scott Sinclair
Mary Sinclair
Shannon Teskey & John Monczka
Andrew Tremayne
Jeff Walderman
Jennifer Webster
Paul Westlind
Marc Zwilling & Judith M. Adam

THE MUSICAL STAGE COMPANY SUPPORTERS

2021 / 22

THE MUSICAL STAGE COMPANY SUPPORTERS

ENSEMBLE (\$100-349)

Adrienne Anderson
Anonymous (12)
Rick Archbold & Rick Feldman
Elizabeth Asselstine
Janis & Dave Auster
Lawrence Axmith & Naomi Savage
Janice Baker
Jeff Bale
Karen & Stephen Baron
Kate Barris & Jim Betts
Victoria Bassett
In Honour of Paul Beauchamp
Joan Belford
In Honour of Jilean Bell
Harry Berholz
In Honour of P.J. Boosham
Theresa Boyle
Linda Bracken
Dianne Bradley
Allen Braude
The Brayley Family Fund
John Brenko
Peter Caldwell & Stephen Mader
D. Callison
In Honour of Anne-Marie Canning
Cameron Capel
Leonard & Cheryl Cappe
Boris Celis
Danny Chen
Rebecca Chesley
Laurie Clark
Robert D. Cook
Jerry & Sharon Cooper
In Memory of Jim Craig
Jan Crowley
Terry Crowley
In Honour of Patrick Dale
Carol Dalgado
In Honour of Patrick & Gloria David
James Davis
Jeanie Davis
Michael Dewson
Alan Dingle
Sholem Dolgoy
Lisa Douglas
Anne Dragicevic
Tenio Evangelista
Angela Ferrante
Barbara Fingerote
Kevin Finora
Anne Fleming
Tim Fort
Murray D. Foster
Amiel Gladstone
Elaine Gold
Catherine Graham
Susan Marcus & Rozanne Grimard
Grosskleg Family
Doreen Gryfe
In Honour of Spencer Lanthier
Gail Hakala
Jennifer Hardy
Nancy Hawkins
Katie Hermant
Ann Hodges
Brett House
Kathy Hoy

Pam Hrick
Ilene Hyman
Dara & Lorne Indig
In Memory of Kenneth Roy Jacob
In Memory of Harry & Jean Jankura
Robert Johnston
Rayna Jolley
Debbie Kassirer & Glenn French
Lynn & Aubrey Kauffman
Heather Kertland
Jeffrey Knox & Jen Sutherland
Francy Kussner
Jordan Laffrenier
Joan Lasley
Brenda Lazare
CG Leatherdale
Gina Lee
Judith & Harvey Levkoe
Kevin Long
Leah-Ann Lymmer
Liane Macdonald
Alexandra MacLennan
Mira MacLeod
In Honour of Larry and Marilyn MacNeill
David MacNicol
Ruth Manchee Kenins
Elizabeth Manson
Ruth & Harold Margles
Rose Mastracci
Edward Mathewson
Pat & John McCormack
Robert McLaren
Julie McMullen
David Michalidis
Wendy Millar & Mark Dawson
Jacquelyn Miskie
The Rev. Marilli Moore
Joy & Eddy Morassutti
In Honour of Erika Morey
Michael Murphy & Robert Stephen
Carole & Richard Murzin
Laraine & Neil Naft
Lindsay Naft
Briane Nasimok
Vanessa Naughton
S. Nevills
Hans & Carol Paabor
Ruth & Andy Patterson
Shelagh Paul
Felicia & Ante Pavlovic
Larry Peloso & Andy Neilson
Michael Pezzack
Harold Povilaitis
Jo Ann Pynn
Lola Rasminsky
Luke Anthony Reece
Adele & George Robertson
Andrea Robertson
D & F Robinson
Michael Rosenbluth & Ronni Rosenberg
Corey Ross
Donna Rouzaud
Jennifer & Noah Schein
Steven Schipper
Mike Scott
Elizabeth Sheffield
Don Sider
Jason & Konrad Sigala

Brenda & Phillip Silver
Suzanne Simzer
Michael Sinclair
David & Marlene Smith
Saralee Smolkin
In Honour of Chris & Debbie Sobolewsky
Michael & Brenda Somer
Jean Stephen
Carol Strom & John Migicovsky
Vinetta Strombergs
Ross & Ann Stuart
Beth Sulman
Merrill Swain
Almos Tassonyi
Leonie Thelwell
Richard M. Thomson
Michael Trent
Roslyn Tsao
Robert Wallace
Laura Webster
Linda Weir
Scott Werry
Howard Wetson
Adam White & Robert Allan
Christopher White
In Memory of Gregory Williams
Jennifer Wilmot
Heather Wilson
Judy Wineberg
Susan Wolburgh Jenah
Debby Wright
The Yee Family
Mary Young Leckie & Keith Leckie
Hersh Zeifman
Lilie Zende
Connie & Hartley Zwingerman
In Honour of Hartley Zwingerman

*Multi-year giving program.

These listings are current as of September 8, 2021 and we have made every effort to ensure appropriate recognition. If, however, your name has been accidentally omitted, listed incorrectly, or misspelled, please contact Althea at altheabakogeorge@musicalstagecompany.com. We apologize in advance for any inconvenience this may cause.

THE MUSICAL STAGE COMPANY BROUGHT TORONTO TO LIFE!

We look back and celebrate an extraordinary summer of outdoor performances and inventive musical programming.

We are very proud to have brought live musical experiences back to Toronto this summer with over 125 performances that employed over 60 artists and reached over 6000 attendees.



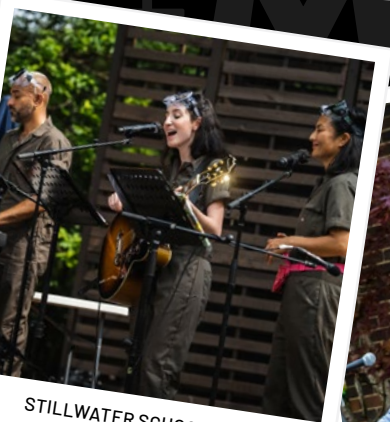
BITTERJUICE!
AS PART OF MUSICAL MOMENTS



BAAPII ROHO



BLACKOUT



**STILLWATER SCHOOL FOR
MOSQUITOS**



PORCHSIDE SONGS



STREET PARTY!
AS PART OF MUSICAL MOMENTS

**Proud to support
The Musical Stage Company**

As part of our goal to help people feel a sense of belonging in their communities, TD supports Arts and Culture events, initiatives, and organizations across North America that amplify diverse voices.

td.com/treadycommitment

**TD READY
COMMITMENT**



© The TD logo and other trademarks are the property of The Toronto-Dominion Bank or its subsidiaries.

**THE MUSICAL
STAGE CO.**

An innovator in musical theatre.
A civic-minded cultural institution.

The future of Canadian musical theatre.

IT'S BETTER WITH **MUSIC.**