

PRESENTED BY

THE **MUSICAL**
STAGE CO.

MARQUEE

A MUSICAL STAGE COMPANY PRODUCTION

TAKE THE MOMENT

Starring
CYNTHIA DALE

JUNE 23 – 25
WINTER GARDEN THEATRE

2021/22

#MARQUEETO

Marquee Founding Presenting Sponsor



Marquee Founding Lead Donor

ANNE-MARIE
CANNING

Funding Provided by



Official Radio Sponsors



MUSICALSTAGECOMPANY.COM



Proud to support The Musical Stage Company

We're working together with The Musical Stage Company. It's just one of the ways we're helping to open doors for a more inclusive and sustainable tomorrow.

td.com/tdreadycommitment

**TD READY
COMMITMENT**



© The TD logo and other trademarks are the property of The Toronto-Dominion Bank or its subsidiaries.

WELCOME TO TAKE THE MOMENT



Welcome to **TAKE THE MOMENT**! An intimate evening of song and story featuring the music of Stephen Sondheim interpreted by Canadian supernova Cynthia Dale.

Like many of you, I first met Cynthia at the Stratford Festival. Unlike many of you, I had the good fortune of being onstage with her in Stratford's 2007 production of **SOUTH PACIFIC**. The experience was life-changing for me. You see, I had a very small role that happened to share several scenes with Cynthia and her leading man Ted Baerg.

Because of the complex scheduling at Stratford, I spent many many many days in rehearsal just the three of us. Cynthia, Ted, and little old me. I had a front row seat watching a master of her craft hone her performance.

I say this without a shred of exaggeration that prior to those rehearsals and since that time I have never in my life encountered an artist who approaches their work with as much focus, drive, energy, curiosity, rigour, intelligence, heart, and technique, as Cynthia Dale does. Her talent is mind boggling, her work ethic is peerless, her magnetism is hypnotic.

When I first approached Cynthia with this concert idea, I asked her to think about creating an evening unlike anything she had ever done before - no ball gowns, no orchestra, no frills. Just Cynthia. Cynthia telling the stories that shaped her as a human and as an artist. I asked her to dig deep into her past to examine and share the tectonic shifts that transformed her; she said "yes!" and I am so grateful that she did.

Today's performance is truly Cynthia Dale like you have never seen her before. Her work in this concert reaffirms for me the closely held belief when music and story unite, hearts crack open and change is possible. May the power of today's concert remind us all that *it's better with music*. Enjoy the show!



RAY HOGG (HE/HIM)

**ARTISTIC DIRECTOR,
THE MUSICAL STAGE COMPANY**

LAND ACKNOWLEDGEMENT

As you watch **TAKE THE MOMENT** and reflect on how the path you have taken through life has led to your time in Tkaronto, please consider its original caretakers both recorded and unrecorded who have been connected to this land and have been telling their stories for generations.

TAKE THE MOMENT is being performed in the "Dish With One Spoon Territory." The Dish With One Spoon is a treaty between the Anishinaabe Nation, Mississaugas of the Credit, and Haudenosaunee Confederacy that bound them to share the territory and protect the land. Subsequent Indigenous Nations and peoples, colonial settlers, and all newcomers, have been invited into this treaty in the spirit of peace, friendship, and respect.

May this show, performed on this land, remind us of our responsibility to repair the history of injustice and damage that has been done, and continues to be inflicted upon Turtle Island (colonially Canada)'s Indigenous peoples, by its settlers. For more information on how you can be a part of building a more equitable future for Turtle Island's Indigenous peoples, visit The Truth and Reconciliation Commission of Canada by [clicking here](#).

THE MUSICAL STAGE CO.

Salutes our TAKE THE MOMENT Sponsors

MARQUEE Festival Leading Lights



ANONYMOUS

MARK & CHERIE
DAITCHMAN

PENNY FINE &
HUGH FURNEAUX

ROGER & KEVIN
GARLAND

THE CATHERINE &
MAXWELL MEIGHEN
FOUNDATION

LUCY WHITE

*Thank you for bringing this
performance to life!*

Produced by **The Musical Stage Company**

TAKE THE MOMENT

Starring
CYNTHIA DALE

CREATIVE TEAM

Writer
**CYNTHIA
DALE**Director
**RICHARD
OUZOUNIAN**Music Supervisor &
Arranger
DAVID TERRIAULTAssociate
Music Director
BENJAMIN KERSEYMovement Director
**GENNY
SERMONIA**Production Designer
**ARUN
SRINIVASAN**Sound Designer
**MATTEO
DESIMONE**

BAND

Piano/Conductor
DAVID TERRIAULTPiano 2
BENJAMIN KERSEY

PRODUCTION TEAM

Production Management
Provided by
WxW (WHATBYWHEN)Production Supervisor
**CRYSTAL
LEE**Production Supervisor
**CARLOS
VARELA**Associate
Production Manager
MATTEO DESIMONEStage Manager
**DUSTYN
WALES**Apprentice
Stage Manager
JENAE FAIRCLOUGHCopyist
**BENJAMIN
KERSEY**

CREW

Head of Lighting
LARS TILANDERHead of Sound
ROBIN JOHNSTONHead of Props
MARK FISHERHead of Carpentry
IVAN LUKIANIUKRF Technician
**KAMIL
WRZESNIEWSKI**Follow Spot Operator
**ALLAN
BISMOR**Follow Spot Operator
**TYLER
VANCE**

The Musical Stage Company engages, under the terms of the Independent Theatre Agreement, actors and stage managers who are members of the Canadian Actors' Equity Association (CAEA).



The musicians engaged in this production are members of the Toronto Musicians' Association (TMA) Local 149 of the Canadian Federation of Musicians and American Federation of Musicians.



Members of the TAKE THE MOMENT Design team are a part of the Associated Designers of Canada (ADC), Local 659.



The Musical Stage Company is a member of the Toronto Alliance for the Performing Arts (TAPA).

WITH SELECTIONS FROM

ANYONE CAN WHISTLE

Music & lyrics by Stephen Sondheim,
book by Arthur Laurents

ASSASSINS

Music & lyrics by Stephen Sondheim,
book by John Weidman

DO I HEAR A WALTZ?

Music by Richard Rodgers, lyrics by
Stephen Sondheim, book by Arthur Laurents

EVENING PRIMROSE

Music & lyrics by Stephen Sondheim,
book by James Goldman

FOLLIES

Music & lyrics by Stephen Sondheim,
book by James Goldman

GYPSY

Music by Jule Styne, lyrics by Stephen Sondheim,
book by Arthur Laurents

INTO THE WOODS

Music & lyrics by Stephen Sondheim,
book by James Lapine

A LITTLE NIGHT MUSIC

Music & lyrics by Stephen Sondheim,
book by Hugh Wheeler

MERRILY WE ROLL ALONG

Music & lyrics by Stephen Sondheim,
book by George Furth

PASSION

Music & lyrics by Stephen Sondheim,
book by James Lapine

SUNDAY IN THE PARK WITH GEORGE

Music & lyrics by Stephen Sondheim,
book by James Lapine

SWEENEY TODD

Music & lyrics by Stephen Sondheim,
book by Hugh Wheeler

WEST SIDE STORY

Music by Leonard Bernstein, lyrics by
Stephen Sondheim, book by Arthur Laurents

PERFORMANCE NOTES



Running time is approximately 80
minutes with no intermission.



Any video/audio recording of this
production is strictly prohibited.

SPECIAL THANKS

Mitchell Marcus
Ellen Flowers
Mervon Mehta and the
Staff of Koerner Hall
Valeriy Kostyuk and Carla Selzer,
Starvox Entertainment

University of Toronto Faculty of
Music
Steven Philcox

BIOGRAPHIES



CYNTHIA DALE
(she/her)
Writer & Star

Cynthia Dale is one of Canada's most acclaimed and

sought after performers, who has been working professionally since she was five years old. She is a triple sensation in her own right, proving her talents to rave reviews as an award-winning actor, singer and dancer onstage and screen. She has worked extensively in theatre from New York to Stratford, and on screen in countless film and television appearances. She has also recorded three albums of well loved show tunes.

And Cynthia is beyond grateful for the opportunity to to be here, with this team, at this moment...



RICHARD OUZOUNIAN
(he/him)
Director

Richard Ouzounian has worked in the arts professionally for 50 years and has directed, written, or performed in nearly 300 shows. He has served as Artistic Director of 5 major Canadian theatres and been an Associate Director of the Stratford Festival of Canada for 4 seasons. He was Theatre Critic of the Toronto Star for 15 years and spent 14 years as the host of CBC Radio's popular Broadway program, **SAY IT WITH MUSIC**. He is also currently employed as the Creative Consultant for Lighthouse Immersive. He's been married to his wife, Pamela

for 45 years and has two children, Kat and Michael.



DAVID TERRAULT
(he/him)
Music Supervisor,
Arranger & Piano-
Conductor

Born and raised in Montreal, David holds a Bachelor of Music in Classical Piano from McGill University. He has worked with several theatre companies across Canada such as the Musical Stage Co. (**NEXT TO NORMAL**, **FUN HOME**, **YOU ARE HERE**), Mirvish, National Arts Centre, Charlottetown Festival, Sheridan College, Young People's Theatre, Thousand Islands Playhouse, Theatre Aquarius, Theatre Calgary, Segal Centre, Centaur Theatre, Théâtre Duceppe, Théâtre Advienne Que Pourra, Théâtre de l'Oeil Ouvert, Just For Laughs, YES Theatre and Urban Ink. David is thrilled to be working with the MSC team once again! Thank you to Cynthia, Richard, Genny and Ben for their trust and support.



BENJAMIN KERSEY
(he/him)
Associate Music
Director, Piano 2,
Copyist

Benjamin is a French Canadian music director and collaborative pianist known for his stylistic versatility. Recent credits include **THE LAST FIVE YEARS** (Olive Branch Theatre), **SONGBOOK XI** (Tapestry Opera), Stephen Sondheim's **FOLLIES** in Concert (Koerner Hall/RCM), and the world premiere of

a new Canadian opera, **MAID AND MASTER: THE MASSEY MURDER** (UofT Opera). Benjamin currently studies at the University of Toronto, where he is pursuing a Bachelor of Music in Classical Piano under the tutelage of Steven Philcox. He is proud to be represented by The Talent House, and is forever thankful to those who have helped shape his artistry.



**GENNY
SERMONIA**
(she/her)
Movement Director

Genny Sermonia
is a Filipina-

Canadian artist based in Toronto, ON. She has performed and worked creatively at The Stratford Festival, The Shaw Festival, The Elgin Winter Garden Theatres as well as many other notable theatres across North America. Choreographer: **FOLLIES In Concert** (Royal Conservatory of Music); **THE BARBEQUE KING** (Globus Theatre, Toronto Fringe) **A FUNNY THING... FORUM** (Sunshine & Co); Assistant Choreographer: **PHANTOM OF THE OPERA**, **URINETOWN** (Theatre Sheridan); **LITTLE WOMEN, ONCE ON THIS ISLAND** (Stage Door Academy); **ODD SQUAD** (PBS Kids), Best Buy Canada, McDonald's. Always a huge pleasure working with everyone on this incredible team. This one's for Lu.



**ARUN
SRINIVASAN**
(he/him)
Production Designer

Arun has worked
extensively in the

performing arts. Dance collaborators include Robert Desrosiers, Peter

Chin, Danny Grossman, Kaha:wi Dance Theatre, Tiger Princess Dance Projects & ProArteDanza. Theatre credits include Stratford, Soulpepper, Factory, Canadian Stage, The Globe, World Stage, fu-GEN, Cahoots Theatre & Buddies In Bad Times Theatre. His career has garnered him 8 Dora Mavor Moore Award nominations for Outstanding Lighting Design in both the theatre and dance categories. Arun has had the privilege of teaching lighting design at York University, Ryerson University, the University of Waterloo and mentorship at The National Theatre School. Productions have taken him to Ukraine, Malaysia, Singapore, India and China.



**MATTEO
DESIMONE**
(he/him)
Sound Designer
& Associate
Production Manager

Matteo began as an Audio Engineer and Sound Designer working with YES theatre in Sudbury, Ontario. Credits with YES Theatre include **MERRILY WE ROLL ALONG**, (Canada's debut of) **VIOLET**, **MAMMA MIA**, to name a few. Matteo also works as a freelance Technical Director, Production Manager and Sound Designer in Toronto and owns and operates his own livestream and recording studio in Sudbury - Night Owl Studios (IG: @nightovvstudios). Matteo is extremely excited to be back in theatre as part of the Production & Design team with The Musical Stage Company.



CRYSTAL LEE

(she/her)
Production
Supervisor

Crystal's interest in
technical theatre

and management began in her home province of New Brunswick where she worked as a Theatre Production mentor at the University of New Brunswick. She began her independent career as a freelance Production Manager in Toronto after graduating from the National Theatre School of Canada and working at the National Arts Centre as an assistant Production Manager. Crystal is the co-founder of What by When (WxW), a production firm advocating for culturally/ environmentally sustainable and standardized Production Management and Technical Direction practices within the industry. She currently works as Why Not Theatre's Production & Technical Manager.



CARLOS VARELA

(he/him)
Production Manager

Carlos began his
career in his native
Mexico, where he

worked for 8 years with the Thomas Jefferson Musical Theatre Company, touring internationally with many productions. He has also worked with OCESA throughout Latin America, production managing tours of major Broadway productions such as **MARY POPPINS**, **THE LION KING**, and Mexican hit **MENTIRAS, EL MUSICAL**. Since moving to Toronto in 2015, he has focused on work with Summerworks, Rutas Panamericanas, Caminos, Progress, The Fringe Festival, Riser and Luminato. His credits with What By When (WxW) include **21 BLACK FUTURES**, and the upcoming **ANTHROPIC TRACES**.



DUSTYN WALES

(he/him)
Stage Manager

Musical Stage:
**BLACKOUT, DO
YOU WANT WHAT I**

HAVE GOT? A CRAIGSLIST CANTATA, REPRINT, THE LIGHT IN THE PIAZZA Other Theatre (selected): Over 100 productions across Canada including Disney's **NEWSIES, KINKY BOOTS, BACK HOME FOR THE HOLIDAYS** (Drayton), **RUR: A TORRENT OF LIGHT** (Tapestry); **THE GIGLI CONCERT, BILLY BISHOP GOES TO WAR, GLENGARRY GLEN ROSS, FAITH HEALER, TRAVESTIES, WHO'S AFRAID OF VIRGINIA WOOLF?** (Soulpepper), **INTO THE WOODS, CYCLOPS** (TIFT), **YOU DANCE** (National Ballet), **A MAN A FISH** (Persephone), **MUSICAL OF MUSICALS** (Mirvish), **I LOVE YOU YOU'RE PERFECT NOW CHANGE** (Angelwalk), **I THINK I CAN, THE GREAT MOUNTAIN, BLUE PLANET** (YPT), **ROCKY HORROR SHOW, JESUS CHRIST SUPERSTAR, TEMPEST, INTO THE WOODS, GREAT AMERICAN TRAILER PARK MUSICAL** (Hart House), **SOLDIER ON** (UK Toronto Tour), Pan Am Games. Upcoming: **THE SOUND OF MUSIC, DRIVING MISS DAISY** (Drayton).



JENAE FAIRCLOUGH

(she/her)
Apprentice Stage Manager

Jenae is excited to be working with Musical Stage Company on the show, **TAKE THE MOMENT!** She is currently in her third year of study at the University of Toronto and Sheridan College, earning her degree and diploma in Theatre and Drama studies. She also had the pleasure of being the assistant stage manager for the production of **THE SERVANT OF TWO MASTERS** (2022) with the Theatre Erindale.



Celebrating
our diverse
communities
and inspiring
dreams

Proud to support arts that teach
and connect us on a deeper level

Canada Life and design are trademarks
of The Canada Life Assurance Company.





Wherever business takes you



The business landscape has changed. No matter the industry sector, market location or specific areas of business you need addressed, MNP is there... where and when you need us.

John Hughes, CPA, CA | 416.515.3842 | john.hughes@mnp.ca

[MNP.ca](https://mnp.ca)



RBC Emerging Artists

Elevating the art community who enrich and inspire us all.

Supporting the arts is a long-standing priority of RBC®. We recognize the important role they play in building vibrant communities and strong economies.

Together with organizations like **Musical Stage Company**, we support a diverse range of Canadian talent in communities across the country through the **RBC Emerging Artists Project**.

[rbc.com/community-social-impact/
emerging-artists-project.html](https://rbc.com/community-social-impact/emerging-artists-project.html)



Foundation



Supporting
Canadian
talent, **locally.**

BMO



BMO is proud to support
The Musical Stage Company
as the 2021-2022 **New Work
Development Sponsor.**

THE MUSICAL STAGE COMPANY

THE MUSICAL STAGE CO. is Canada's leading charitable musical theatre company. Established in 2004, we strive to make Canada a leader in musical theatre by telling our most important stories with music.

We believe it's better with music.

We are inspired by music's unique ability to viscerally affect people and are committed to cultivating experiences – onstage and off – that transform lives, build empathy and create community through musical theatre.

We incubate new Canadian musicals from development to production, investing in Canadian musical theatre writers and building national and international partnerships. Our musical productions – including award-winning contemporary musicals, world premieres and concerts – are seen live by 30,000 people over the 80+ nights that we are onstage annually in venues both traditional and surprising. To date, our work has been recognized with 105 Dora Award nominations, 23 Dora Awards (including back-to-back Outstanding Musical

Production awards in 2018 and 2019) and 19 Toronto Theatre Critics' Awards.

Our robust education programs develop the artists and audiences of tomorrow, offering musical theatre training that boosts self-confidence and self-expression for over 200 young people each year without cost to the participants. We also curate innovative musical programs in partnership with diverse organizations, maximizing the resonance of our work across disciplines and communities.

UP NEXT AT THE MUSICAL STAGE COMPANY:

UNCOVERED: THE MUSIC OF ABBA

ABBA's heartfelt stories and infectious anthems inspire and unite fans from across musical genres, generations, and the globe. With wildly imaginative arrangements and orchestrations by Reza Jacobs, and featuring Canada's most celebrated stage performers in Toronto's exquisite Koerner Hall, join us November 8 – 10, 2022 as we showcase one of the best-selling musical artists of all time. For details, visit www.musicalstagecompany.com

INTERACT WITH US

THE MUSICAL STAGE COMPANY'S BLOG: MUSICAL NOTES

Musical Notes is an online hub for discussions about the latest trends, developments, and gossip on musical theatre in Toronto and beyond. Including Artistic Director Ray Hogg's blog, interviews with season artists, and more. Check out *Musical Notes*, a home for any musical aficionado. Visit us at www.musicalstagecompany.com/blog.

MUSICALSTAGECOMPANY.COM



info@musicalstagecompany.com



@musicalstageco

Post your pictures & comments about **TAKE THE MOMENT** using #TakeTheMoment & **MARQUEE Festival** using #MarqueeTO

STAFF

EXECUTIVE LEADERSHIP

THE ROGER & KEVIN GARLAND
ARTISTIC DIRECTOR
Ray Hogg (he/him)

CO-EXECUTIVE DIRECTOR
Paul Beauchamp (he/him)

CO-EXECUTIVE DIRECTOR
Kate Supleve (she/her)

STAFF

DIRECTOR OF MARKETING,
COMMUNICATIONS &
CORPORATE PARTNERSHIPS
Victoria Barber (she/her)

PRODUCER
Robyn Hoja (she/her)

ACCESSIBILITY MANAGER &
DEVELOPMENT ASSOCIATE
Alethea Bakogeorge (she/her)

ARTISTIC DEVELOPMENT
ASSOCIATE
Victoria Wang (she/her)

ARTISTIC PROGRAMS
ASSOCIATE
Patricia Cerra (she/her)

DEVELOPMENT ASSOCIATE
Cassandra Di Felice (she/her)

MARKETING &
EVENTS ASSOCIATE
Katie Gorham (she/they)

EVENTS & AUDIENCES
SERVICES ASSOCIATE
Nick Fassbender (he/they)

PRODUCTION COORDINATOR
Abriana Lashley (she/her)

PRODUCTION COORDINATOR
Gabby Noga (she/her)

ACCESSIBILITY COORDINATOR
Tia Lunn (she/her)

ADMINISTRATIVE ASSISTANT
Max Borowski (any pronouns)

GRAPHIC DESIGN
Sherpa Creative

PUBLICITY
**Suzanne Cheriton &
Jenn Perras,
Red Eye Media**

ACCOUNTANT
Jenny Cheng (she/her)

ASSOCIATES

EXECUTIVE PRODUCER
David Daniels

THE FINE FURNEAUX
DIRECTOR OF MUSIC
Reza Jacobs (he/him)

ARTISTIC ASSOCIATE
Robert McQueen (- / -)

ARTISTIC ASSOCIATE
Kevin Wong (he/him)

BOARD OF DIRECTORS

CO-CHAIR
Patrick David

CO-CHAIR
Megan Deeks

VICE-CHAIR
Rhonda Zwingerman

TREASURER
Randy McAuley

SECRETARY
Ian McAuley

Dave Auster

Daren Herbert

John Hughes

David Kaplan

Avon MacFarlane

Catherine McCartney

Bart Nickerson

Paul Orlander

Tisha Rattos

Suzy Rodness

Tania Senewiratne

Celia Smith

Matt Webster

Lucy White

PAST CHAIR

Ellen Wallace

ADVISORY COUNCIL

Jordan Banks

William J.S. Boyle C.M.

Linda Chu

David Daniels

Roger Garland C.M.

Lucille Joseph



DOUBLE YOUR IMPACT AND HELP LIGHT UP THE MARQUEE!

All new and additional donations made before June 30th will be matched up to \$10,000 by Laurence & Judith Siegel through the Bulmash-Siegel Foundation.

***Big dreams need big communities.
We can't do it without you.***

To make a donation, visit www.musicalstagecompany.com/support
or contact Cassandra Di Felice, Development Associate, at
(416) 927-7880 ext. 233.

OUR 2021-22 SPONSORS



Canada Council
for the Arts

Conseil des arts
du Canada



ONTARIO ARTS COUNCIL
CONSEIL DES ARTS DE L'ONTARIO
an Ontario government agency
un organisme du gouvernement de l'Ontario



FUNDED BY
THE CITY OF
TORONTO



MARQUEE FESTIVAL SPONSORS

FOUNDING
PRESENTING SPONSOR



TD READY
COMMITMENT

FOUNDING LEAD
DONOR

Anne-Marie Canning

FUNDING
PROVIDED BY

Ontario



Ontario
Trillium
Foundation

Fondation
Trillium
de l'Ontario

MARQUEE LEADING LIGHTS

canada **life**

Anonymous

Mark & Cherie
Daitchman

Penny Fine &
Hugh Furneaux

Roger & Kevin
Garland

The Catherine &
Maxwell Meighen
Foundation

Lucy White

PROGRAM & PRODUCTION SPONSORS

DIXON ROAD
PRODUCING PATRONS

The Don & Shirley Green
Family Foundation

MUSICAL MOMENTS
PROGRAM SPONSOR

William J.S. Boyle, C.M.

NEW WORK
DEVELOPMENT SPONSOR

BMO



ONE SONG GLORY

Aubrey & Marla Dan
Foundation

RBC APPRENTICE
PROGRAM



Emerging
Artists

UNCOVERED: THE MUSIC
OF DOLLY PARTON
PRODUCING PATRONS

Anonymous

LEADING LIGHTS

AUBREY AND MARLA
DAN FUND FOR NEW
MUSICALS

Aubrey & Marla Dan
Foundation

THE BANKS PRIZE

The Banks Family

CRESCENDO CLUB

Anne-Marie Canning

DIXON ROAD

Anonymous

DIXON ROAD

Len & Suzy Rodness

FIRST DRAFTS

Andrew Gillespie

THE KATHLEEN
C.FREEMAN LEADERSHIP
DEVELOPMENT FUND

Kathleen & Dennis
Freeman

ONE SONG GLORY

Norine Rose

UNCOVERED: THE MUSIC OF
DOLLY PARTON

Haynes-Connell
Foundation

SEASON SUPPORTERS



Metcalf
Foundation



The Musical Stage Company is a registered charity BN 86204 4146 RR0001. If you would like more information, please contact Kate Supleve at 416.927.7880 ext. 224 or katesupleve@musicalstagecompany.com

THE MUSICAL STAGE COMPANY SUPPORTERS

Special thanks to our sponsors, major supporters, Crescendo Club & Virtuosos — core builders of The Musical Stage Company who have committed to a multi-year donation.

MARQUEE FESTIVAL LEAD SUPPORTERS (\$100,000+)

FOUNDING LEAD DONOR

Anne-Marie Canning

FOUNDING PRESENTING SPONSOR

TD Bank Group

FUNDING PROVIDED BY

Ontario Trillium Foundation

MARQUEE FESTIVAL LEADING LIGHTS

Anonymous

William J. S. Boyle, C.M.

Canada Life

Marc & Cherie Daichtman

Penny Fine & Hugh Furneaux

Roger & Kevin Garland

Lucy White

SPONSORS & MAJOR GIFTS*

Anonymous

The Banks Family

David W. Binet

BMO

Bulmash-Siegel Foundation

CIBC

The Aubrey and Marla Dan Foundation

Kate Alexander Daniels & David Daniels

Kathleen & Dennis Freeman

Andrew Gillespie

The Don & Shirley Green Family
Foundation

The Haynes-Connell Foundation

Hai Jackman Foundation

David & Sheryl Kerr

Catherine McCartney Cadogan/Karen
Tanz

The Catherine & Maxwell Meighen
Foundation

Metcalf Foundation

MNP

Linda & Chris Montague

RBC Foundation

Len & Suzy Rodness

Norine Rose

The Slight Family Foundation

CRESCENDO CLUB (\$5000+)*

LEADING LIGHT:

Anne-Marie Canning

Marsha & Aubrey Baillie Fund at Toronto
Foundation

Beauchamp-Winskell Family

Linda Chu & John Donald

Patrick David & Michael Smith

Megan Deeks & Simon Paabor

James Fleck Family Foundation

Kathleen & Dennis Freeman

Howard, Barclay & Associates

Gary & Margot Marcus

Mitchell Marcus & Orrin Wolpert

Leanne & David Matlow Family Fund at

the Jewish Foundation of Greater
Toronto

Noel Mowat

Paul Orlander & Helayna Shekter

Gary Rogers

Sherry Shannon-Vanstone

Celia M Smith

Ellen & Les Wallace

Dr. Rhonda Zwingerman & Jeremy
Opolsky

VIRTUOSOS (\$1500+)*

Anonymous

Gail & George Anthony

Paul Beauchamp & Trevor Pirri

Diana Bennett & Spencer Lanthier

Brand Family Foundation at the Jewish

Foundation of Greater Toronto

Helen Burstyn, C.M.

The Paul Butler and Chris Black

Foundation at Toronto Foundation

Louis Charpentier & Robert Wakefield

Mitchell Cohen & Janice Lewis

The Peter & Eleanor Daniels Foundation

Mark & Susan Davis

Bruce Dean & Robert Hall

Marg & John Deeks

Philip Doyle & Yvonne Garcia

Pam & Richard Earle

Emerald Foundation

Kevin Finora

Patricia J. Fleming (FBG) Fund at

Toronto Foundation

John & Susan Goddard

Ray Hogg & Gerald Michaud

Craig Hanson

Kent James

Lucille & Urban Joseph, O.C.

In Memory of Jake Kennedy

Elaine Kierans & Shawn McReynolds

Scott Lauder

Victoria Lee & Philip Hebert

Ann Leese & Irwin Rotenberg

Linda Lewis & Lorie Cappe

Patti & John Loach

Avon Macfarlane

Jefferson & Sally Mappin

Ian McAuley

Randy McAuley

Bart Nickerson

Opolsky Family

The Pottruff Family Foundation

Tisha Rattos

Anne & Jeffery Schwartz

Mike Scott

Charlie Seminerio

Robert Sherrin

Gregory & Crystal Smith

Richard Sniderman & D'Arcy Robert

Jason Spetter

Marg Steed & Wayne Atkinson

Kate Supleve

Martin R. Wasserman

Matt Webster

LEAD PLAYER (\$750-1499)

In Honour of Justice Rosalie Silberman

Abella

The Pat & Tony Adams Freedom Fund

for the Arts

Earl Bederman & Ann MacPherson

Norman Buchanan

Karen Cheah

Don Deboer & Brent Vickar

Annie & Rich English

Louise Ferri & Brian Monti

Julia & Curtis Gallagher

Steven Hurowitz & Diane Osak

Blake Hutcheson

Kathy Kacer & Ian Epstein

David M Kaplan Medicine Professional

Corporation

Linda Lee

Paul, Jaclyn & Michelle Marcus

David Montgomery

Bart Nickerson

In Memory of Karen Sharf

Diane Spivak

Carole Winberg

Brenda Wolpert

FEATURED PLAYER (\$350-749)

Sara & Michael Angel

Anonymous

Peter Bakogeorge & Christine Mushka

John Bailey

Guy Beaudin

David Bell

Scott Belton & Jessica Leeder

Daniel Brown

In Honour of Anne-Marie Canning

Alan Dingle

Neal Dlin

Stephen Farb & Esther Yermus

Gail Fenwick

Brian Flor

Anne Fleming

David Fuller

Alex Galatis

David Goldbloom & Nancy Epstein

Ron & Sari Goldenberg

Bob & Kathy Grant

Julia Grant

Joe Hoja

In Honour of Kent James

Lorraine Kelly

Dana Lafarga

Jillian & Mark Lebovits

Kathy & Becky Liddle

Adrian M. Macdonald

Shawn McCarthy

Wendy Millar & Mark Dawson

Abby & Perry Minuk

Christine Moynihan

Anthony Ng

Cindy & Ed Nowina

Kerry Pond

Annalee & Brian Schnurr

Professor Julie Silver

Amanda & Scott Sinclair

Mary Sinclair

THE MUSICAL STAGE COMPANY SUPPORTERS

2021/22

THE MUSICAL STAGE COMPANY SUPPORTERS

Sheryl Smolkin & Joel Troster
Ross & Ann Stuart
Shannon Teskey & John Monczka
Martha Tory
Andrew Tremayne
Jeff Walderman
Jennifer Webster
Paul Westlind
Marc Zwelling & Judith M. Adam

ENSEMBLE (\$100-349)

Diana Abraham
In Memory of Mary, Milton & Brad Allison
Adrienne Anderson
Anonymous (6)
Rick Archbold & Rick Feldman
Elizabeth Asselstine
Janis & Dave Auster
Lawrence Axmith & Naomi Savage
Janice Baker
Carol Barcados
Marie Baron
Kate Barris & Jim Betts
Victoria Bassett
In Honour of Paul Beauchamp
Joan Belford
Harry Berholz
Theresa Boyle
Linda Bracken
Dianne Bradley
Allen Braude
Graham Brunke
Peter Caldwell & Stephen Mader
D. Callison
In Honour of Anne-Marie Canning (2)
Leonard & Cheryl Cappe
Danny Chen
Rebecca Chesley
Laurie Clark
Bernard F. Cocchiola
Claire & Michael Conway
Robert D. Cook
Jerry & Sharon Cooper
In Memory of Jim Craig
Carol Dalgado
Rita Davies
James Davis
Monique Delorme
Lucio Di Clemente
In Honour of Patrick Dale
Lisa Douglas
Angela Ferrante
Barbara Fingerote
Kevin Finora
Sandra Flow
Tim Fort
Donna Garner
Elaine Gold
Tim & Samantha Grant
Doreen Gryfe
Nancy Hawkins
Ann Hodges
In Honour of Robyn Hoja
Pam Hrick
Ilene Hyman
Dara & Lorne Indig
In Memory of Kenneth Roy Jacob
Susan & Liman Jegins
Robert Johnston

Rayna Jolley
Debbie Kassirer & Glenn French
Barb Kelly
Heather Kertland
Lorraine Kirchmann
KPCC Fund at the Jewish Foundation of
Greater Toronto
Rona Kosansky
Emily Kulin
Francy Kussner
Brenda Lazare
Judith & Harvey Levkoe
The Leo Baeck Day School Toronto
Kevin Long
Leah-Ann Lymmer
Megan MacKeigan
Ruth Manchee Kenins
Susan Marcus & Rozanne Grimard
Ruth & Harold Margles
Ken Marple
Rose Mastracci
Edward Mathewson
Anne Matlow & John Bohnen
Marcia McClung
Pat & John McCormack
Robert McLaren
David McMullen
Jordan Merkur
Linda Meyer
Julie Michailidis
Marc Michell
Jacquelyn Miskie
The Rev. Marili Moore
Joy & Eddy Morassutti
Jeff Morris
Carole & Richard Murzin
Laraine & Neil Naft
Lindsay Naft
Briane Nasimok
S. Nevills
Bob & Debbie Newell
Hans & Carol Paabor
Ruth & Andy Patterson
Corey Payette
Alilisa Percival
Michael Pezzack
Harold Povilaitis
Kimberly Purtell
Jo Ann Pynn
Carol Richardson
Adele & George Robertson
D & F Robinson
Donna Rouzard
Julia Sax
Jennifer & Noah Schein
Steven Schipper
Gayla & Ken Schwartz
Mike Scott
Elizabeth Sheffield
Don Sider
Brenda & Phillip Silver
Michael & Susan Silver
Julian Sleath
David & Marlene Smith
Deborah Smith
Saralee Smolkin
Mary Spyraakis
Deborah Stalman
Voy Stelmazynski
Jean Stephen

Carol Strom & John Migicovsky
Beth Sulman
Judy Sutton
Merrill Swain
Almos Tassonyi
Margaret Teasdale
Leonie Thelwell
Richard M. Thomson
Roz Tobias
Jeremy Tomlinson
Michael Trent
Maria Wardinger
Laura Webster
Linda Weir
Scott Werry
Paul & Joanne Whittaker
Jennifer Willmot
David Wilson
Debby Wright
Mary Young Leckie & Keith Leckie
Mary Anna Zakula
Lou Zamprogna
Hersh Zeifman
Tamara Zielony
Cynthia Zimmerman

*Multi-year giving program.

These listings are current as of May 19, 2022 and we have made every effort to ensure appropriate recognition. If, however, your name has been accidentally omitted, listed incorrectly, or misspelled, please contact Alethea at aletheabakogeorge@musicalstagecompany.com. We apologize in advance for any inconvenience this may cause.

THE ELGIN & WINTER GARDEN THEATRE CENTRE

189 YONGE STREET, TORONTO M5B 1M4 416-314-2901

www.heritagetrust.on.ca/ewg and like us on facebook.com/elginwintergardentheatres

We ask that you pause for a moment to consider the land on which this theatre is located – people have lived on this land for generations and generations and generations. We are gathered on the traditionally lands occupied by Indigenous peoples. They continue to care for this land and to shape Ontario. We honour all First Nations, Inuit and Métis peoples and their valuable contributions to this land past and present – and in this space we pay our respects to the Mississaugas of the Credit First Nation.

Front of House Manager	Lori MacLean
House Manager	Kelly Mudie
Theatre Services Manager	Samantha Serles
Production Manager	Carolyn Mykytyshyn
Marketing & Communications Manager	Ellen Flowers
Bookings & Events Manager	Kevin Harris
Administrative Assistant	Lena Polyvyannaya
Operations Manager	Derek Dresser
Operations Staff	John Kolesnyk, Jeff Snow & Marc Washington

I.A.T.S.E. Department Heads - Local 58

Head Carpenter	Ivan Lukianiuk
Head Electrician	Lars Tilander
Head of Properties	Mark Fisher
Head of Sound	Robin Johnston

Ontario Heritage Trust

Chief Executive Officer	Beth Hanna
Director, Heritage Program & Operations	Wayne Kelly
Director, Corporate Business Services	Paul Dempsey

The Elgin and Winter Garden Theatre Centre is owned and operated by the Ontario Heritage Trust. The Trust works province-wide to identify, protect, promote and conserve heritage in all its forms. It envisions an Ontario where the places, landscapes, traditions and stories that embody our heritage are reflected, valued and conserved for future generations. The Trust is financially supported, in part through generous corporate sponsors and private donors.

Please Note: At the discretion of management latecomers may be admitted at a suitable break in the performance. The use of cameras, cell phone cameras, recording equipment, radios or any playback devices are not permitted in the theatres. Patrons are asked to ensure that alarms and cell phones do not sound during the performance. Smoking is not permitted anywhere in the building.

Hearing Enhancement: The Elgin and Winter Garden Theatre Centre is equipped with a hearing enhancement system. Please ask an usher for assistance.

Lost and Found Articles: Call 416-314-2885 and leave a message with your name, phone number and description.

Public Tours: Guided tours Monday evenings at 5 p.m. Reservations are required. Admission is \$12 for adults, \$10 for students and seniors. Check website for dates, reservations, and tickets purchasing.

Volunteers: The Trust is grateful to the volunteers who donate their time and efforts to the promotion and preservation of the theatres. Volunteers are involved in the tour program, gift shop sales and special events. If you are interested in volunteering, go to

www.heritagetrust.on.ca/ewg/aboutus for more information.

THE MUSICAL
STAGE CO.

MARQUEE

FESTIVAL

LIGHTING UP TORONTO

DIXON ROAD



JUNE 1 - 19

PORCHSIDE SONGS



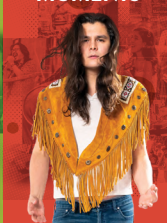
JUNE 14 - JULY 13

TAKE THE MOMENT



JUNE 23 - 25

MUSICAL MOMENTS



MAY 28 - JUNE 12

RBC CREATORS' PROJECT



JUNE 14

A city-wide celebration of musical storytelling, The Musical Stage Company's MARQUEE offers 4 weeks of wildly joyful musical programming throughout the Greater Toronto Area. Embracing the city as our stage by lighting up parks, porches, streets and traditional theatre venues, MARQUEE unleashes a burst of musical experiences across Toronto with unexpected moments of musical creativity and spontaneous community gatherings.

Full productions, star-studded concerts, community-based performances and participatory pop-ups will reinvigorate the city, reminding us all why it's better with music.

ABOUT THE MUSICAL STAGE COMPANY

Based in Toronto, The Musical Stage Company is the largest and leading charitable musical theatre company in Canada. We strive to make Canada a leader in musical theatre. We believe IT'S BETTER WITH **MUSIC**.

Scan the QR code to learn more about us!



SCAN ME

Photos by Dahlia Katz

#MarqueeTO @MusicalStageCo

MUSICALSTAGECOMPANY.COM