

THE MUSICAL STAGE COMPANY, TORONTO PUBLIC LIBRARY, AND YONGE STREET THEATRICALS PRESENT

2022 / 23

# RETOLD

3 NEW WORKS IN DEVELOPMENT INSPIRED BY  
THE SHORT STORIES OF MAVIS GALLANT

## THE CARETTE SISTERS

Composer & Lyricist  
SUZY WILDE  
Bookwriter  
ROSE NAPOLI

## DIVORCE LUNCH

Composer & Lyricist  
ADAM SAKIYAMA  
Bookwriter & Lyricist  
KAT SANDLER

## MARIGOLD

Composer & Lyricist  
BEN ELLIOTT  
Bookwriter & Lyricist  
FATUMA ADAR

MARCH 21-26, 2023

4<sup>TH</sup> FLOOR OF TORONTO REFERENCE LIBRARY  
AT 789 YONGE STREET

PRODUCED BY

THE MUSICAL  
STAGE CO.

tpl: toronto  
public library

YONGE STREET  
Theatricals

SUSTAINING  
CREATIVE SUPPORT



SEASON  
SPONSOR



TD READY  
COMMITMENT

LAUNCH PAD  
PROGRAM SPONSOR

BMO



#RETOLD

MUSICALSTAGECOMPANY.COM

Supporting  
Canadian  
talent, **locally.**



The company of DIXON ROAD. Photo by Elija Nichols.

BMO



BMO is proud to support  
**The Musical Stage Company**  
as the 2022/23 **New Work**  
**Development Sponsor.**

# WELCOME TO RETOLD

We are so thrilled to welcome you to **RETOLD**, our first offering of 2023!

Tonight you will see a triptych of short musicals inspired by the works of acclaimed Canadian author Mavis Gallant, written by our exceptional *Launch Pad* cohort: Fatuma Adar and Ben Elliott, Rose Napoli and Suzy Wilde, and Kat Sandler and Adam Sakiyama.

*Launch Pad* is an initiative that invests in leading Canadian musical theatre writers and collaborators. This program offers a 10-month residency in which musical theatre creators navigate a full developmental process, shepherding 30-minute musicals from conception to production with guidance from internationally renowned mentors.

Our investment in Canadian writers and their development is not only an integral part of the process of creating new work, but we also believe that in championing new writers here at home, we strengthen the fabric of the national theatre landscape as the works of these writers make their way across Canada and the globe. With this project we have furthered our commitment to artist development, by launching the careers of our RBC Apprentices and The Kathleen C. Freeman Leadership Development Fund Award recipients: Kaylee Harwood in direction, Tyler Pearse in choreography, and Benjamin Kersey in music direction.

At this performance, we will journey through the complex relationships featured in Gallant's short stories, examining the oft-unattainable expectations we set for the ones we love. Looking around at the walnut shelves lined with volumes, we can't imagine a more fitting location to share these works than in the Jack Rabinovitch Reading Room, a space that upon entrance, seems to inspire story, inviting its guests to crack open a book or pick up a pen and write... all the while remembering the countless libretti and musical scores that are nestled just one floor above us. Mavis Gallant once wrote, *"All lives are interesting; no one life is more interesting than another. Its fascination depends on how much is revealed, and in what manner."*

We are so excited to share the fascinating manner in which these writers have adapted Gallant's stories and invite you to peek behind the curtain at the process of developing new work, right in the heart of our city's celebration of writing, the Toronto Reference Library.



RAY HOGG (HE/HIM)

**ARTISTIC DIRECTOR,  
THE MUSICAL STAGE COMPANY**



SARAH O'BRECHT (SHE/HER)

**APPRENTICE  
ARTISTIC DIRECTOR,  
THE MUSICAL STAGE COMPANY**

# LAND ACKNOWLEDGEMENT

As you watch **RETOLD** and join us in celebrating reconnecting with friends to enjoy our love of music within Tkaronto, please consider its original caretakers both recorded and unrecorded, who have been giving their love and have been connected to this land for generations.

**RETOLD** is being performed in the “Dish With One Spoon Territory.” The Dish With One Spoon is a treaty between the Anishinaabe Nation, Mississaugas of the Credit, and Haudenosaunee Confederacy that bound them to share the territory and protect the land. Subsequent Indigenous Nations and peoples, colonial settlers, and all newcomers, have been invited into this treaty in the spirit of peace, friendship, and respect.

May this show, performed on this land, remind us of our responsibility to repair the history of injustice and damage that has been done, and continues to be inflicted upon Turtle Island (colonially Canada)’s Indigenous peoples, by its settlers. For more information on how you can be a part of building a more equitable future for Turtle Island’s Indigenous peoples, visit The Truth and Reconciliation Commission of Canada by [clicking here](#).

## PERFORMANCE NOTE

Content warnings: death, grief, mentions of the Holocaust, mature language



Running time is approximately 105 minutes with no intermission



Any video/audio recording of this production is strictly prohibited.



Cell phones and other electronic devices are distracting for actors and audience members, please turn them off during the show.



The Musical Stage Company engages, under the terms of the Independent Theatre Agreement, actors and stage managers who are members of the Canadian Actors' Equity Association (CAEA).



The musicians engaged in this production are members of the Toronto Musicians' Association (TMA) Local 149 of the Canadian Federation of Musicians and American Federation of Musicians.



The Musical Stage Company is a member of the Toronto Alliance for the Performing Arts (TAPA).



Made with the Generous Support of ACTRA Toronto



The Musical Stage Company, Toronto Public Library, & Yonge Street Theatricals  
present

# RETOLD

## THE CARETTE SISTERS

Composer & Lyricist  
SUZY WILDE

Bookwriter  
ROSE NAPOLI

## DIVORCE LUNCH

Composer & Lyricist  
ADAM SAKIYAMA

Bookwriter & Lyricist  
KAT SANDLER

## MARIGOLD

Composer & Lyricist  
BEN ELLIOTT

Bookwriter & Lyricist  
FATUMA ADAR

## STARRING

ERIC CRAIG, STARR DOMINGUE, EMILY LUKASIK & TRACY MICHAILIDIS

## CREATIVE & PRODUCTION TEAM

Director  
KAYLEE HARWOOD \*†

Movement Director  
TYLER PEARSE \*

Music Director & Piano-Conductor  
BENJAMIN KERSEY \*

Apprentice Artistic Director  
SARAH O'BRECHT \*†

Music Supervisor  
JONATHAN CORKAL-ASTORGA

Production Designer  
PATRICIA REILLY

Stage Manager  
JASMYNE LEISEMER

Apprentice Stage Manager  
SYDNEY STOBO

## LAUNCH PAD DEVELOPMENT TEAM

THE CARETTE SISTERS  
Director/Dramaturg  
MARY FRANCIS MOORE

DIVORCE LUNCH  
Director/Dramaturg  
RICHARD GREENBLATT

MARIGOLD  
Director/Dramaturg  
SARAH GARTON STANLEY

THE CARETTE SISTERS  
Music Supervisor/Music Director  
NICKY PHILLIPS

DIVORCE LUNCH  
Music Supervisor/Music Director  
CHRIS BARILLARO

MARIGOLD  
Music Supervisor/Music Director  
BOB FOSTER

## LIVE STREAM TEAM

Powered by **StreamStage.live**



ASL Interpretation  
Created and Performed by  
**258 Signs**

\* - RBC Apprentice

† - The Kathleen C. Freeman Leadership Development Fund Apprentice

Based on the stories from "Linnet Muir" "The Carrette Sisters" and "Edouard, Juliette, & Lena" by Mavis Gallant. Presented through special arrangement with Georges Borchardt, Inc. on behalf of Estate of Mavis Gallant. All rights reserved.

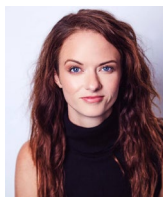
# ABOUT | THE CARETTE SISTERS

Berthe and Marie are two sisters who couldn't be more opposite of each other; Berthe is loud, reclusive, and single. Marie is quiet, honest (to a fault), mild-tempered, and newly widowed. Shortly after her husband's death Marie becomes convinced that he is haunting her. Determined to prove her sister wrong, Berthe, armed with her sharp wit, accompanies her sister into the home only to discover that the house is, in fact, haunted. As they venture to move this spirit on, the two sisters are set on a journey of self-discovery as they come to terms with tragic losses and learn more about each other.

Creators Rose Napoli and Suzy Wilde bring this touching musical to life with humor and tenderness as they show us just how enduring the bond between sisters really is. Accompanied by a breathtaking score, **THE CARETTE SISTERS** is a reminder that our sisters truly are the loves of our lives.

ERIC CRAIG as **RAYMOND**  
EMILY LUKASIK as **MARIE**

STARR DOMINGUE as **NARRATOR**  
TRACY MICHAILIDIS as **BERTHE**



**SUZY WILDE**  
(she/her)  
Composer & Lyricist

Suzy Wilde is a Canadian songwriter, composer, copyist, arranger, and musician based in Toronto. A passionate, versatile, and energetic creator, Wilde's music has been heard on stages across Canada and the world. She has written scores for the musicals (with Anika Johnson and Barbara Johnston) **SUMMERLAND** (Edge of the Sky Theatre, Toronto Fringe), (with Barbara Johnston) **BE KIND, REWIND** (Randolph Academy, Edge of the Sky Theatre), and more. Wilde has composed and arranged for Crow's Theatre, Tarragon Theatre, Sheridan College, Edge of the Sky Theatre, Musicata Hamilton's Voices, Regent Park's "The Journey" project, The Musical Stage Company, The Guelph Youth Choir, and The Wexford Gleeks.



**ROSE NAPOLI**  
(she/her)  
Bookwriter

Rose is a Dora nominated playwright, actor, screenwriter, and alumna of the Canadian Film Centre, where she now teaches. She is writing another musical with partner, Suzy Wilde, at the Tarragon Theatre and is working on commissions for several new plays. In the TV world, she has recently worked on shows for Bell/Crave, CBC, and is currently in development with Cameron Pictures and Banger Films. She is published with Scirocco Drama, loves carbohydrates, mystery novels, and the Toronto Blue Jays.

# ABOUT | DIVORCE LUNCH

Jules has been dating Ed for 10 years and the only thing standing in the way of taking their relationship to the next level is Lena, Ed's not-quite-ex-wife. He needs her signature on divorce papers, so Jules sets up a divorce lunch: a chance to meet and end their marriage. What ensues is a hilariously eventful five star dining experience that doesn't end the way anyone intends. With an entertaining score and unforgettable characters, **DIVORCE LUNCH** examines the relationships in our lives that no longer serve us, yet are impossible to let go of.

From creators Kat Sandler and Adam Sakiyama, this 30 minute excerpt of a new musical comedy takes inspiration from Mavis Gallant's short story *Édouard, Juliette, & Lena*.

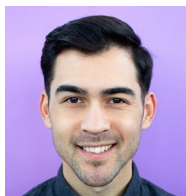
ERIC CRAIG as ÉDOUARD  
EMILY LUKASIK as SALLY

STARR DOMINGUE as JULIETTE  
TRACY MICHAILIDIS as LENA



**KAT SANDLER**  
(she/her)  
Bookwriter & Lyricist

Kat Sandler is an award-winning screenwriter, playwright, and director. Onstage her most recent work includes: **YAGA** (Tarragon Theatre), **THE PARTY AND THE CANDIDATE** (The Citadel Theatre), and **LATE NIGHT**. Her play, **MUSTARD** (Tarragon Theatre) won the Best New Play Dora Award, **BANG BANG** and **YAGA** were nominated as well. She won the Austen Film Festival's Fiction Podcast Award for **HOW TO BUILD A FIRE**. Kat attended the CFC/EOne's inaugural Adaptation Lab. She has written for **KIM'S CONVENIENCE**, and podcasts for The Koffler Centre, CBC's **PLAYME** and **TWOUP'S LIMETOWN**. She has various on-camera projects in development with eOne, TB Content, and the Donaldson Company.



**ADAM SAKIYAMA**  
(he/him)  
Composer & Lyricist

Adam Sakiyama is a Dora award-winning music director & composer with a passion for new work development. Recent theatre credits include **UNCOVERED: THE MUSIC OF DOLLY PARTON** (The Musical Stage Company), **SUNDAY IN THE PARK WITH GEORGE** (Eclipse Theatre), **IN STUDIO** (Theatre Sheridan), **STUPIDHEAD!** (Outside the March), **NEXT TO NORMAL** (The Musical Stage Company / Mirvish), **BILLY ELLIOT** (Stratford). Composing credits include **MACBETH** (Ballet Kelowna), **QUENCH** (Axon Interactive) and **IN BETWEEN** (National Ballet of Canada). Songwriter & Arranger for *Super Simple Songs*, one of the most watched educational channels on YouTube. Endless thanks to Alysa and Sawyer, my ikigai.

# ABOUT | MARIGOLD

Set in 1930s Montreal, **MARIGOLD** follows the story of Linnet – a young girl navigating a world where adults are constantly trying to dim her imaginative light. In the topsy-turvy universe of **MARIGOLD**, where everything seems upright, Linnet's unique perspective on the world finally flourishes and strengthens her sense of self. This magical place isn't as stable as it appears, though, and soon enough Linnet must confront the negative adults in her life head-on.

Inspired by Mavis Gallant's *Linnet Muir Stories* and from the creative minds of Fatuma Adar and Ben Elliott, **MARIGOLD** is an spectacular journey filled with unexpected twists and turns that is sure to transform audiences' understanding of childhood innocence and the perception of what is real.

ERIC CRAIG as ANGUS/GOLD COMRADE  
EMILY LUKASIK as RUBY/GLORIA SWANSON

STARR DOMINGUE as CHARLOTTE/  
RED QUEEN  
TRACY MICHAILIDIS as LINNET



**FATUMA ADAR**  
(she/her)  
Bookwriter & Lyricist

Fatuma Adar is a Somali-Canadian writer based in Toronto. She was long-listed in CBC's Creative Nonfiction Prize and profiled in *Up Close: Young Black Women Making Canada Better*. In 2017, she joined the third cohort of The Bars Workshop at the Public Theater in New York City. Her work has been featured in the *Toronto Star*, *The Globe & Mail*, *Maclean's* and an anthology entitled *Black Writers Matter* published by the University of Regina Press. Fatuma wrote the book, music and lyrics to **DIXON ROAD** which won a Dora Award for Outstanding New Musical. Catch her one woman musical comedy show **SHE'S NOT SPECIAL** in May 2023 co-presented by Tarragon and Nightwood Theatre.

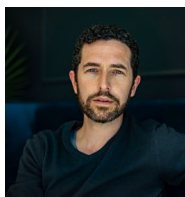


**BEN ELLIOTT**  
(he/him)  
Composer & Lyricist

Ben Elliott is an award-winning performer, composer, lyricist, orchestrator, musical supervisor, and musical director for both stage and screen. Musicals Ben has collaborated on include, **THE PARK!** (Studio 58), **THE BEST LAID PLANS** (Touchstone/Patrick Street), **TOQUE: SONGS FOR A CANADIAN WINTER** (The Citadel), The Beatles version of **AS YOU LIKE IT** (Bard On The Beach/Chicago Shakespeare), and **SHE'S NOT SPECIAL** (Nightwood/Tarragon). Up next Ben returns to Vancouver to musical direct and act in The Beatles version of **AS YOU LIKE IT** at Bard On The Beach. Ben is a graduate of Bishop's University and Studio 58.



# PERFORMER BIOGRAPHIES



## ERIC CRAIG

(he/him)  
Performer

Recently: Original Broadway cast of **PARADISE SQUARE**.  
Selected Theatre:

**MATILDA THE MUSICAL** (1st National tour, Toronto cast), **SUNDAY IN THE PARK WITH GEORGE** (Eclipse Theatre), **INTIMATE APPAREL** (WJT), **THE SECRET GARDEN** (Theatre Calgary), **FUN HOME, PRIDE AND PREJUDICE**, **LES MISERABLES** (Arts Club), **HAMLET** (SLSF), **THE HOBBIT** (Grand Theatre), **THE LAST 5 YEARS** (Angelwalk), **EDGES** (The Musical Stage Company). TV/ Film: **BORJE, THE HANDMAID'S TALE, GOOD WITCH, WORKIN' MOMS, REIGN, 12 MONKEYS, MURDOCH MYSTERIES**. Most importantly, he is a new father. So if he looks tired, he probably is.



## STARR DOMINGUE

(she/her)  
Performer

Theatre (Selected): **CONTROLLED DAMAGE, ROOM,**

**OIL AND WATER** (The Grand Theatre); **RED VELVET** (Crow's Theatre); **DIXON ROAD** (The Musical Stage Company / Obsidian Theatre); **LITTLE SHOP OF HORRORS, BILLY ELLIOT** (Stratford Festival); **AN OCTOROON, ME & MY GIRL, PYGMALION, SWEENEY TODD** (Shaw Festival); **Hairspray** (Mirvish); **AIN'T MISBEHAVIN'** (Broadway Nat'l Tour / European Tour); **COOKIN' AT THE COOKERY** (Alabama Shakespeare Festival) Film/TV (Selected): **HUDSON & REX** (Shaftesbury / Pope Productions);

**HAIRSPRAY** (New Line Cinema); **ODD SQUAD MOBILE UNIT** (TVO / Sinking Ship); **4 SQUARE** (Treehouse TV); **CODE 8 - PART II** (Netflix); **PRIYA TATE: SUPER TASTER** (Bad Hats Theatre) Other: Creator/Producer and Host of the digital talk show, **THE BLACKTOR'S STUDIO**.

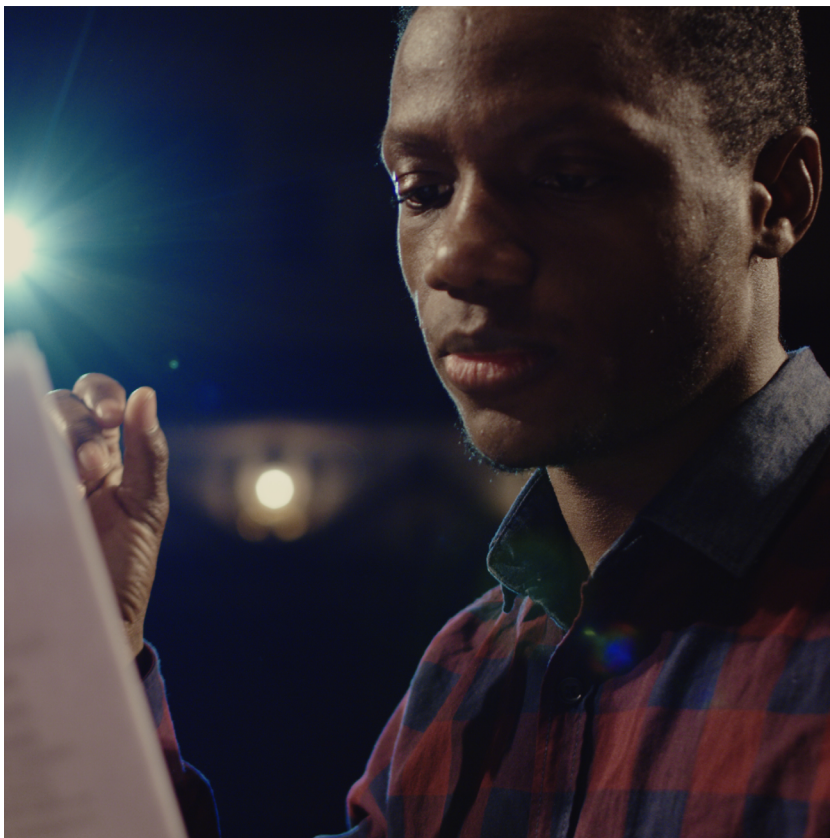


## EMILY LUKASIK

(she/her)  
Performer

Born, raised, and living in Hamilton, Emily has played on stages across

Canada. Some favourites: **ONCE** (Mirvish, Dora Award); **HOOK UP** (TPM/Tapestry Opera); **LITTLE WOMEN** (Theatre New Brunswick, Theatre Orangeville, Theatre Sheridan); **LOVE'S LABOUR'S LOST** (Dauntless City Theatre); **FIDDLER ON THE ROOF** (Persephone); **KITCHEN RADIO, SAINT ANNE'S REEL** (Blyth Festival); **AS YOU LIKE IT** (Canadian Stage); five seasons at the Shaw Festival, including **SAINT JOAN, SWEENEY TODD, WILDE TALES; THE TEAM** (ETC/Theatre Aquarius); **HOME FOR THE HOLIDAYS** (Theatre Aquarius). Film/TV credits include: **ECHOES** (Chaos and Light/ Montreal World Film Festival). Up next: Carole King in **BEAUTIFUL** (Drayton). [emilylukasik.com](http://emilylukasik.com)



## **Proud to support The Musical Stage Company**

We're working together with The Musical Stage Company. It's just one of the ways we're helping to open doors for a more inclusive and sustainable tomorrow.

**[td.com/tdreadycommitment](https://td.com/tdreadycommitment)**

**TD READY  
COMMITMENT**



© The TD logo and other trademarks are the property of The Toronto-Dominion Bank or its subsidiaries.



## TRACY MICHAILIDIS

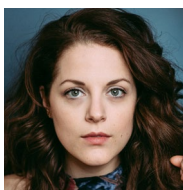
(she/her)

Performer

For The Musical Stage Company: **LIFE AFTER**

(Dora Award), **PARADE, THE LIGHT IN THE PIAZZA**. Recent credits include: **SWEENEY TODD** (TIFT, Teatro Timbre 4, Buenos Aires), **INDECENT** (Studio 180/ Mirvish), **INTO THE WOODS** (TIFT, Dora nomination). Tracy has spent seasons at the Stratford and Shaw Festivals, the Charlottetown Festival, the Atlantic Theatre Festival, and at regional theatres across the country. In the U.S: Disney's **BEAUTY AND THE BEAST** (Broadway, Nat'l Tour), **FUN HOME** (Nat'l tour), **ETHEL SINGS** (Off-B'way), and **FOUR SEASONS** at the Weston Playhouse. Two of her greatest loves: working on new material, and teaching. She's thrilled to be a part of **RETOLD**. [www.tracymichailidis.com](http://www.tracymichailidis.com).

## CREATIVE & PRODUCTION TEAM BIOGRAPHIES



## KAYLEE HARWOOD

(she/her)

Director

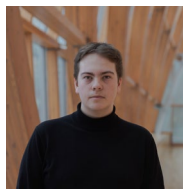
RBC Apprentice &

Kathleen C. Freeman

Leadership Fund Recipient

Kaylee is a west-coast raised director and performer based in Tkaronto. Directing credits include: **IN STUDIO: THE WORDS AND MUSIC OF BRITTA JOHNSON** (Theatre Sheridan), **NOW WHAT? THE ART OF MOVING ON** (co-conceiver/director, The Musical Stage Company), **MEAT** workshop (The Musical Stage Company). Assistant director: **CONTROLLED DAMAGE** (The Grand), **DIXON ROAD** (The Musical Stage

Company), **BOY FALLS FROM THE SKY** (Mirvish). She is grateful to her TMSC family for years of bringing marvellous new work to life as a performer and director, and especially the experiences of **REFRAMED** (AGO), **REPRINT** (Globe & Mail) and now **RETOLD** here in one of her favourite sanctuaries in the city.



## BENJAMIN KERSEY

(he/him)

Music Director &  
Piano Conductor

RBC Apprentice

Benjamin is a Franco-Ontarian

musician known for his stylistic versatility. Recent credits: **JOSEPH..., & JULIET** (Mirvish), **TAKE THE MOMENT, UNCOVERED: THE MUSIC OF DOLLY PARTON** (The Musical Stage Company), **THE LAST FIVE YEARS** (Olive Branch Theatre), **SONDHEIM'S FOLLIES IN CONCERT AT KOERNER HALL** (Royal Conservatory of Music), plus cabaret acts in NYC and all over Ontario. He studies both Classical Piano with Steven Philcox and French Literature at the University of Toronto, and received the ARTES scholarship for Franco-Ontarian artists. Benjamin has been working in music libraries for the past 2.5 years: finally performing in a library is thrilling. Thanks to Talent House and to those who've helped shape his artistry. @benjaminerseymusic



## TYLER PEARSE

(he/him/they)

Movement Director

RBC Apprentice

Tyler Pearse is a Toronto-based artist and choreographer

with a thriving performance career: **ROCK OF AGES** (Elgin Theatre), **PETER'S FINAL FLIGHT** (Ross Petty Productions), **GINNY & GEORGIA** (Netflix). Tyler

graduated from Sheridan College's Music Theatre Performance Program and is an occasional guest artist at his alma mater, Etobicoke School of the Arts. His focus is to create innovative and organic work from the guts, with collaboration at the core of his artistry. Last year, he had the opportunity to assist Jeff Dimitriou with Theatre Making Movement (**WATCH ME WORK**) and Sierra Holder with **RIDE THE CYCLONE** (Tweed & Co.). @tylerpearse



## SARAH O'BRECHT

(she/her)

Apprentice  
Artistic Director

RBC Apprentice &  
Kathleen C. Freeman  
Leadership Fund Recipient

Sarah O'Brecht is an actor, producer, director and writer originally from Saint John, NB. Film/TV: **MOTHER OF INVENTION**, **LADY DARB**, **ADULTING**, **GOOD WITCH**, and **WAREHOUSE 13**.

Sarah wrote, produced, and acted in **GOOD WITH HER**, directed by Sheila McCarthy. Her film **SHE HER HIM** appeared at the Reelworld Festival. Selected Theatre: **1979** (TNB), **NOISES OFF**, **MAMMA MIA** (Neptune), **ANNE OF GREEN GABLES**, **MAMMA MIA**, **ALICE... LOOKING GLASS** (Charlottetown), **JERSEY BOYS**, **CHICAGO** (Stage West), **GUYS AND DOLLS** (Segal Centre), **JOHNNY BELINDA** (Smile). Asst.

Direction: **BEAUTY AND THE BEAST** (Globe), **LUCY MAUD & ANNE** (Smile). Sarah is the Co-Founder of Theatre Making Movement, a Nightwood Innovator, and the 2022-2023 Apprentice Artistic Director of The Musical Stage Company.  
@sarahobrecht /  
www.sarahobrecht.com



## JASMYNE LEISEMER

(she/her)

Stage Manager

Jasmyne is thrilled to be joining the **RETOLD**

team! Theatre credits include; **THE EXTINCTION THERAPIST**, **A HAMILTON HOLIDAY**, **SERVING ELIZABETH**, **RING OF FIRE**, **PAT AND SKEE**, **HOME FOR THE HOLIDAYS**, **SWEAT AND ELF: THE MUSICAL**, **CABARET** (Theatre Aquarius). **SWEET DELILAH SWIM CLUB**, **KINKY BOOTS**, **GREASE**, **THOROUGHLY MODERN MILLIE**, **PRISCILLA QUEEN OF THE DESERT**, **WEST SIDE STORY** (Drayton Entertainment) **RETURN TO GRACE** (RGA Media - Fallsview Casino). Her film credits include **MOST DANGEROUS GAME** Season 2 (CBS), **REACHER** (Amazon). Jasmyne is a graduate of Sheridan College's Technical Theatre Program. Thank you for supporting live theatre, enjoy the show!



## SYDNEY STOBO

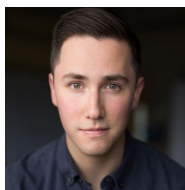
(she/her)

Apprentice  
Stage Manager

Sydney Stobo is an aspiring stage manager, born and

raised in Richmond Hill, ON. Select credits include **LET'S DANCE!** (Terra Bruce Productions), **9 TO 5: THE MUSICAL** (Capitol Theatre), **HARRY POTTER AND THE CURSED CHILD** (Mirvish), **FIRST DRAFTS: PARKDALE** (The Musical Stage Company/Theatre Sheridan), **SPRING AWAKENING**, **THE STARS OF MARS** (Theatre Sheridan). Sydney is so thrilled to be a part of this wonderful production, and would like to thank her family and friends for all their love and support.





**JONATHAN  
CORKAL-  
ASTORGA**  
(he/they)  
Music Supervisor

Jonathan Corkal-Astorga is a Chilean-Canadian music director, copyist, and performer. An avid supporter of new theatrical stories, he has been fortunate to develop some of the foremost music theatre being made in Canada. In his work, Jonathan brings a collaborative and story-focused approach to musical direction, with a passion for interrogating material through new lenses. Jonathan has worked with such companies as The Musical Stage Company, Theatre Calgary, Obsidian Theatre, Outside The March, Eclipse Theatre, Smile Theatre, and many more. He is forever thankful for his family in both Chile and Canada for their support - saludos y abrazos a todos!



**PATRICIA  
REILLY**  
(she/her)  
Production Designer

Patricia Reilly (she/her) is an Ontario-born, B.C.- and

Alberta-raised theatre artist. Credits include: For Stratford Festival, assistant designer of **THREE TALL WOMEN**, **BAKKHAI**; assistant costume designer of **DEATH AND THE KING'S HORSEMAN**, **THE MERRY WIVES OF WINDSOR**, **AN IDEAL HUSBAND**. Elsewhere: Designs for Chemainus Theatre Festival (**LUMBERJACKS IN LOVE**, **GLORIOUS!**); Puente Theatre (**FADO**); Pacific Opera Victoria (**RATTENBURY**, **LA VOIX HUMAINE**); Blue Bridge Repertory Theatre (**THE DRAWER BOY**, **OUR TOWN**, **THE GLASS MENAGERIE**, **OF MICE AND MEN**). Training: 3D Animation and Character Design (Fanshawe College), Master of Scenography

(Wimbledon College of Arts), BFA in Theatre Design (University of Victoria.)  
Online: [patriciareilly.com](http://patriciareilly.com).



## STREAMSTAGE

StreamStage.  
live is Canada's

premiere video and live stream support organization; specializing in multi-camera broadcasts, high concept virtual projects, and technological problem solving to make events fun, easy, and live. With over 250 on-site events for 100 partners in Canada and the US, StreamStage.live skillfully shares your moment. Happy clients include CBC, SodaStream, the CFL, many happy brides, and some of Canada's most beloved theatre organizations such as the Musical Stage Company.

## SPECIAL THANKS

Arraymusic	Seren Lannon
The Grand Theatre	Faly Mevamanana
The Stratford	Lucy McPhee
Festival Warehouse	Mitchell Marcus
Daniel Abrahamson	Robert McQueen
Daniel Bennet	Mike O'Brecht
Tamara Bernier	Ali Joy
Rick Boynton	Richardson
Mike Butler	Sayer Roberts
Rolyne Butler	Lynne Shankel
Natalie Doherty	Mary Spyraakis
Cassandra Di Felice	Joseph Tritt
Kira Guloien	Kelsey Verzotti
Juliette Jones	Aaron Willis

An additional thank you to our live Toronto Reference Library team for their work at The Jack Rabinovitch Reading Room.

**THE MUSICAL STAGE COMPANY  
THANKS OUR OFFICIAL  
DINING SPONSOR**



Make the Jazz Bistro a part of your dinner plans all year long! The Jazz Bistro has live music every night, and is the ideal spot for your pre or post-theatre meal or drink.



Donors of The Musical Stage Company receive an exclusive donor discount for 10% off your meal\* at the Jazz Bistro year-round, Tuesday through Saturday evenings. Just mention that you are a Musical Stage Company donor to your server!

\*Discount does not apply to meals served at Musical Stage Company Insider Events. 10% discount does not apply to the cover charge. Cover charge may vary. Visit [jazzbistro.ca](http://jazzbistro.ca) for more information about nightly performances and cover charges.

# tpl:opens doors

An illustration of a library event. On a small stage, a man in a blue suit and cap stands at a microphone, gesturing with his hands. Next to him, a woman sits on a stool, playing an acoustic guitar. The stage is lit with warm, golden light. In the foreground, an audience of diverse people is seated, watching the performance. Some are looking at their phones, while others are looking towards the stage. The background is a simple, textured wall.

## to arts & culture

**Open up to new experiences at the library.** Meet your favourite writers, sign out free museum passes, engage in lively debates, or take in a musical performance. We open doors to new ideas, different perspectives, Toronto's arts scene, and more.

Visit the library, in person or online, to collide with new ideas.

[tpl.ca/opendoors](https://tpl.ca/opendoors)

Media Sponsor

**TORONTO STAR**

**tpl:** toronto  
public library

# THE MUSICAL STAGE COMPANY

## THE MUSICAL STAGE CO.

is Canada's leading charitable musical theatre company. Established in 2004, we strive to make Canada a leader in musical theatre by telling our most important stories with music.

### We believe it's better with music.

We are inspired by music's unique ability to viscerally affect people and are committed to cultivating experiences – onstage and off – that transform lives, build empathy and create community through musical theatre.

We incubate new Canadian musicals from development to production, investing in Canadian musical theatre writers and building national and international partnerships. Our musical productions – including award-winning contemporary musicals, world premieres and concerts – are seen live by 30,000 people over the 80+ nights that we are onstage annually in venues both traditional and surprising. To date, our work has been recognized with 109 Dora Award nominations, 24 Dora Awards (including back-to-back Outstanding Musical

Production awards in 2018 and 2019) and 19 Toronto Theatre Critics' Awards.

Our robust education programs develop the artists and audiences of tomorrow, offering musical theatre training that boosts self-confidence and self-expression for over 200 young people each year without cost to the participants. We also curate innovative musical programs in partnership with diverse organizations, maximizing the resonance of our work across disciplines and communities.

### UP NEXT AT THE MUSICAL STAGE COMPANY:

Inspired by true events from 1915 in New York, **KELLY v. KELLY** reveals the story of a mother and daughter divided by passion, money and what it means to be a woman at a time of huge societal change. Running May 26 – June 18 at the Berkeley Street Theatre, **KELLY v. KELLY** will take you inside the imaginations of Britta Johnson and Sara Farb, two of Canada's most celebrated musical theatre forces. For tickets and more information, visit [www.musicalstagecompany.com](http://www.musicalstagecompany.com)

## INTERACT WITH US

### THE MUSICAL STAGE COMPANY'S BLOG: MUSICAL NOTES

*Musical Notes* is an online hub for discussions about the latest trends, developments, and gossip on musical theatre in Toronto and beyond. Including Artistic Director Ray Hogg's blog, interviews with season artists, and more. Check out *Musical Notes*, a home for any musical aficionado. Visit us at [www.musicalstagecompany.com/blog](http://www.musicalstagecompany.com/blog).

[MUSICALSTAGECOMPANY.COM](http://MUSICALSTAGECOMPANY.COM)



[info@musicalstagecompany.com](mailto:info@musicalstagecompany.com)



@musicalstageco

Post your pictures & comments about  
**RETOLD** using #RETOLD



# STAFF

## EXECUTIVE

CO-EXECUTIVE DIRECTOR  
**Paul Beauchamp (he/him)**

CO-EXECUTIVE DIRECTOR  
**Kate Supleve (she/her)**

ARTISTIC DIRECTOR  
**Ray Hogg (he/him)**

## ARTISTIC & PRODUCTION

PRODUCER & OPERATIONS  
MANAGER  
**Robyn Hoja (she/her)**

ARTISTIC PROGRAMS  
ASSOCIATE  
**Patricia Cerra (she/her)**

ASSOCIATE PRODUCER  
**Gabby Noga (she/her)**

ACCOUNTANT  
**Jenny Cheng (she/her)**

## DEVELOPMENT

ACCESSIBILITY MANAGER &  
DEVELOPMENT ASSOCIATE  
**Alethea Bakogeorge  
(she/her)**

DEVELOPMENT ASSOCIATE  
**Colette Richardson  
(she/her)**

## MARKETING

DIRECTOR OF MARKETING &  
COMMUNICATIONS  
**Lauren Naus (she/her)**

MARKETING & EVENTS  
ASSOCIATE  
**Katie Gorham (she/they)**

EVENTS & AUDIENCES  
SERVICES ASSOCIATE  
**Nicholas Fassbender  
(he/they)**

PUBLICITY  
**Suzanne Cheriton (she/her)**  
**Red Eye Media**

GRAPHIC DESIGN  
**SHERPA Creative**

## ASSOCIATES

EXECUTIVE PRODUCER  
**David Daniels**

ARTISTIC ASSOCIATE  
**Robert McQueen (- / -)**

ARTISTIC ASSOCIATE  
**Kevin Wong (he/him)**

FOUNDER  
**Mitchell Marcus (he/him)**

# BOARD OF DIRECTORS

CO-CHAIR  
**Patrick David**

CO-CHAIR  
**Megan Deeks**

VICE-CHAIR  
**Rhonda  
Zwingerman**

TREASURER  
**Randy McAuley**

SECRETARY  
**Ian McAuley**

DIRECTORS  
**Alyse Bernbaum**

**Anita Ferrari**

**Susan Garvie**

**Daren Herbert**

**John Hughes**

**David Kaplan**

**Paul Orlander**

**Tisha Rattos**

**Suzu Rodness**

**Tania Senewiratne**

**Matt Webster**

**Lucy White**

# ADVISORY COUNCIL

**Jordan Banks**

**William J.S. Boyle C.M.**

**Linda Chu**

**David Daniels**

**Roger Garland C.M.**

**Lucille Joseph**

# THANK YOU!

## THE SLAIGHT FAMILY FOUNDATION

The Musical Stage Company is honoured to be a recipient of funding as part of The Slaight Family Foundation's transformational gift of \$15 million to theatres across Canada. This contribution helps ensure a bright future for Canadian theatre from coast to coast.

Thank you to The Slaight Family Foundation for believing in our work and for your dedication to keeping Canadian theatre alive for generations to come.





# Wherever business takes you

---



The business landscape has changed. No matter the industry sector, market location or specific areas of business you need addressed, MNP is there... where and when you need us.

John Hughes, CPA, CA | 416.515.3842 | [john.hughes@mnp.ca](mailto:john.hughes@mnp.ca)

---

[MNP.ca](https://mnp.ca)

# THE MUSICAL STAGE CO.

## Salutes Our Retold Leading Lights

William J.S. Boyle C.M.;  
Di Bartolomeo,  
Di Lorenzo-Graham Foundation;  
The Slight Family Foundation;  
Lucy White

## Salutes Our New Work Development Sponsor



*Thank you for bringing this  
performance to life!*





# THE BEGINNING IS ALWAYS A GOOD PLACE TO START

Your support sets the foundation for long and illustrious careers for Canada's next generation of musical theatre talent and their stories.

Contact Colette Richardson, Development Associate at [coletterichardson@musicalstagecompany.com](mailto:coletterichardson@musicalstagecompany.com) or 416-927-7880 ext. 233 to support the future of Canadian musical theatre with your contribution today!

# MUSICAL STAGE 2022-23 SPONSORS

## SUSTAINING CREATIVE SUPPORT



## SEASON SPONSOR



## RETOLD SPONSORS

### NEW WORK DEVELOPMENT SPONSOR



### RETOLD LEADING LIGHTS

Di Bartolomeo, Di Lorenzo- Graham Foundation	William J.S. Boyle C.M.	The Slaight Family Foundation	Lucy White
---	-------------------------------	-------------------------------------	------------

## GOVERNMENT SUPPORTERS



## PROGRAM & PRODUCTION SPONSORS

### KELLY V. KELLY PRODUCING PATRONS

The Don & Shirley Green  
Family Foundation

### ONE SONG GLORY

Aubrey & Marla Dan  
Foundation

### RBC APPRENTICE PROGRAM



### UNCOVERED: THE MUSIC OF ABBA PRODUCING PATRONS

Anonymous

## LEADING LIGHTS

### AUBREY AND MARLA DAN FUND FOR NEW MUSICALS

Aubrey & Marla Dan  
Foundation

### THE BANKS PRIZE

The Banks Family

### CRESCENDO CLUB

Anne-Marie Canning

### THE KATHLEEN C. FREEMAN LEADERSHIP DEVELOPMENT FUND

Kathleen & Dennis  
Freeman

### NOTEWORTHY

Andrew Gillespie

### ONE SONG GLORY

Norine Rose

### UNCOVERED: THE MUSIC OF ABBA LEADING LIGHTS

Haynes-Connell Foundation

## SEASON SUPPORTERS



OFFICIAL DINING SPONSOR



OFFICIAL HOTEL SPONSOR



The Catherine & Maxwell  
Meighen Foundation

Anonymous

The Musical Stage Company is a registered charity BN 86204 4146 RR0001. If you would like more information, please contact Kate Supleve at 416.927.7880 ext. 224 or [katesupleve@musicalstagecompany.com](mailto:katesupleve@musicalstagecompany.com)

# THE MUSICAL STAGE COMPANY SUPPORTERS

Special thanks to our sponsors, major supporters, Crescendo Club & Virtuosos – core builders of The Musical Stage Company who have committed to a multi-year donation.

## SUSTAINING CREATIVE SUPPORT

The Slight Family Foundation

## SEASON SPONSOR

TD Bank Group

## RETOLD SUPPORTERS

### NEW WORK DEVELOPMENT SPONSOR

BMO

## RETOLD LEADING LIGHTS

William J.S. Boyle, C.M.

Di Bartolomeo, Di Lorenzo-Graham Foundation

The Slight Family Foundation  
Lucy White

## SPONSORS & MAJOR GIFTS\*

Anonymous (2)

The Banks Family  
BMO

Bulmash-Siegel Foundation

Canada Life

Anne-Marie Canning

CIBC

The Aubrey and Marla Dan Foundation

Mark & Cherie Daitchman

Kate Alexander Daniels & David Daniels

Kathleen & Dennis Freeman

Roger & Kevin Garland

Andrew Gillespie

The Don & Shirley Green Family  
Foundation

The Haynes-Connell Foundation

Hal Jackman Foundation

Jazz Bistro

David & Sheryl Kerr

The Lawrence Family Foundation

The Catherine & Maxwell Meighen  
Foundation

Metcalf Foundation

MNP

Linda & Chris Montague

RBC Foundation

Len & Suzy Rodness

Norine Rose

Lucy White

Yonge Suites

## CRESCENDO CLUB (\$5000+)\*

### LEADING LIGHT:

Anne-Marie Canning

Beauchamp-Winsell Family

Bulmash-Siegel Foundation

Marsha & Aubrey Baillie Fund at Toronto

Foundation

Linda Chu & John Donald

Penny Fine & Hugh Furneaux

James Fleck Family Foundation

Kathleen & Dennis Freeman

Howard, Barclay & Associates

Gary & Margot Marcus

Mitchell Marcus & Orrin Wolpert

Leanne & David Matlow

Noel Mowat

Megan Deeks & Simon Paabor

Len & Suzy Rodness

Gary Rogers

Sherry Shannon-Vanstone

Paul Orlander & Helayna Shekter

Patrick David & Michael Smith

Celia M Smith

Ellen & Les Wallace

Dr. Rhonda Zwingerman & Jeremy

Opolsky

## VIRTUOSOS (\$1500+)\*

Anonymous

Gail & George Anthony

Marg Steed & Wayne Atkinson

Paul Beauchamp

Helen Bakstyn, C.M.

Louis Charpentier & Robert Wakefield

Mitchell Cohen & Janice Lewis

Marg Deeks

Pam & Richard Earle

Opolsky Family

Anita Ferrari

Kevin Finora

The Paul Butler and Chris Black

Foundation at Toronto Foundation

Patricia J. Fleming (FBG) Fund at

Toronto Foundation

The Peter & Eleanor Daniels Foundation

The Pottruff Family Foundation

John & Susan Goddard

Bruce Dean & Robert Hall

Craig Hanson

Ray Hogg & Gerald Michaud

Kent James

Lucille & Urban Joseph, O.C.

In Memory of Jake Kennedy

Elaine Kierans & Shawn McReynolds

Scott Lauder

Victoria Lee & Philip Hebert

Linda Lewis & Lorie Cappe

Jefferson & Sally Mappin

Randy McAuley

Ian McAuley

Bart Nickerson

Tisha Rattos

Mike Scott

Robert Sherrin

Richard Sniderman & D'Arcy Robert

Jason Spetter

Kate Supleve

Martin R. Wasserman

Matt Webster

Carole Winberg

## LEAD PLAYER (\$750-\$1499)

Scott Belton & Jessica Leeder

Earl Bederman & Ann MacPherson

Alan Dingle

Don Deboer & Brent Vickar

Kathy Kacer & Ian Epstein

David M Kaplan Medicine Professional

Corporation

Marcia McClung

David Montgomery

Paul, Jaclyn & Michelle Marcus

In Memory of Karen Sharf

Robert Sherrin

Diane Spivak

Nan and Jack Wiseman Family Fund at

the Jewish Foundation of Greater

Toronto

Cynthia Vlasic

Brenda Wolpert

In Honour of Hartley Zwingerman

## FEATURED PLAYER (\$350-\$749)

Sara & Michael Angel

John Bailey

Peter Bakogeorge & Christine Mushka

Guy Beaudin

David Bell

Daniel Brown

In Honour of Anne-Marie Canning

Robert D. Cook

Stephen Farb & Esther Yermus

Barb Di Felice

Cassandra Di Felice

Neal Dlin

Brian Fior

Anne Fleming

Alex Galatis

Ron & Sari Goldenberg

Bob & Kathy Grant

Katie Hermant

Joe Hoja

In Honour of Kent James

Lorraine Kelly

Dana & Bailey Lafarga

Jillian & Mark Lebovits

Kathy & Becky Liddle

Alexandra MacLennan

Katherine Mansfield

Shawn McCarthy

Robert McLaren

David McMullen

Wendy Millar & Mark Dawson

Carole & Richard Murzin

Lindsay Naft

Anthony Ng

Penny Noble

Cindy & Ed Nowina

Kerry Pond

Lori Russell

Sandra Schinnerl

Annalee & Brian Schnurr

Don Sider

Professor Julie Silver

Sheryl Smolkin & Joel Troster

Ross & Ann Stuart

Shannon Teskey & John Monczka

Andrew Tremayne

Jennifer Webster

Laura Webster

Paul Westlind

# THE MUSICAL STAGE COMPANY SUPPORTERS

## ENSEMBLE (\$100-\$349)

Anonymous (7)  
Diana Abraham  
Adrienne Anderson  
In Memory of Mary, Milton & Brad Allison  
Rick Archbold & Rick Feldman  
Elizabeth Asselstine  
Lawrence Axmith & Naomi Savage  
Victoria Bassett  
Kate Barris & Jim Betts  
Joan Belford  
David Bell  
Harry Berholz  
Linda Bracken  
Dianne Bradley  
Allen Braude  
Graham Brunke  
D. Callison  
Ron Cameron-Lewis  
In Honour of Anne-Marie Canning  
Leonard & Cheryl Cappe  
Yvonne Causer  
Danny Chen  
Rebecca Chesley  
Laurie Clark  
Bernard F. Cocchiola  
Claire & Michael Conway  
Jerry Cooper  
Jerry & Sharon Cooper  
In Memory of Jim Craig  
Michel D'Orsonnens  
In Honour of Patrick Dale  
Rita Davies  
James Davis  
Lucio De Clemente  
Monique Delorme  
Linda & Laurie Di Federico  
Barry Edwards  
Angela Ferrante  
Barbara Fingerote  
Sandra Flow  
Tim Fort  
Debbie Kassirer & Glenn French  
Jason Fung  
Donna Garner  
Elaine Gold  
David Goldbloom & Nancy Epstein  
Tim & Samantha Grant  
Doreen Gryfe  
Kaylee Harwood  
Stephanie Hodel  
In Honour of Robyn Hoja  
Pam Hrick  
Ilene Hyman  
In Memory of Kenneth Roy Jacob  
Susan & Liman Jegins  
Robert Johnston  
Rayna Jolley  
Barb Kelly  
Ruth Manchee Kenins  
Alice Kernaghan  
In Honour of Sheryl & David Kerr

Heather Kertland  
Lorraine Kirchmann  
Rona Kosansky  
Emily Kulin  
Francy Kussner  
Brenda Lazare  
Judith & Harvey Levkoe  
Lesley Lewis  
Kevin Long  
Leah-Ann Lymer  
Megan MacKeigan  
Susan Marcus & Rozanne Grimard  
Ruth & Harold Margles  
Ken Marple  
Rose Mastracci  
Edward Mathewson  
Anne Matlow & John Bohnen  
Carolyn McClester  
Pat & John McCormack  
Jordan Merkur  
Linda Meyer  
Marc Michell  
The Rev. Marili Moore  
Diane Morgan  
Jeff Morris  
Briane Nasimok  
S. Nevills  
Bob and Debbie Newell  
Corey Payette  
Aliisa Percival  
Michael Pezzack  
Harold Povilaitis  
Kimberly Purtell  
Jo Ann Pynn  
Carol Richardson  
Adele & George Robertson  
D & F Robinson  
Donna Rouzard  
Julia Sax  
Jennifer & Noah Schein  
Steven Schipper  
Gayla & Ken Schwartz  
Elizabeth Sheffield  
Maureen Simpson  
David & Marlene Smith  
Deborah Smith  
Saralee Smolkin  
Mary Spyraakis  
Voy Stelmaszynski  
Jean Stephen  
Carol Strom & John Migicovsky  
Beth Sulman  
Judy Sutton  
Merrill Swain  
Almos Tassonyi  
Margaret Teasdale  
Roz Tobias  
Jeremy Tomlinson  
KPCC Fund at the Jewish Foundation of  
Greater Toronto  
The Leo Baeck Day School Toronto  
Martha Tory

Michael Trent  
Rick Verrette  
Brian Walsh  
Marla Wardinger  
Robert Weir  
Scott Werry  
Paul & Joanne Whittaker  
David Wilson  
William Woodley  
Debby Wright  
Lou Zamprogna  
Hersh Zeifman  
Tamara Zielony  
Cynthia Zimmerman  
Marc Zwelling & Judith M. Adam

\*Multi-year giving program.

These listings are current as of February 7th, 2023 and we have made every effort to ensure appropriate recognition. If, however, your name has been accidentally omitted, listed incorrectly, or misspelled, please contact Colette at [coletterichardson@musicalstagecompany.com](mailto:coletterichardson@musicalstagecompany.com). We apologize in advance for any inconvenience this may cause.

RBC

## Emerging Artists



## Elevating the art community who enrich and inspire us all.

Supporting the arts is a long-standing priority of RBC®. We recognize the important role they play in building vibrant communities and strong economies.

Together with organizations like **Musical Stage Company**, we support a diverse range of Canadian talent in communities across the country through **RBC Emerging Artists**.

[rbc.com/community-social-impact/emerging-artists.html](https://rbc.com/community-social-impact/emerging-artists.html)



THE **MUSICAL**  
**STAGE** CO.

A MUSICAL STAGE COMPANY PRODUCTION  
IN ASSOCIATION WITH **canadianstage**

# KELLY v. KELLY

BOOK BY **SARA FARB**

MUSIC & LYRICS BY **BRITTA JOHNSON**

AN INTOXICATING  
NEW CANADIAN  
MUSICAL.

**MAY 26 – JUNE 18, 2023**

**Marilyn and Charles Baillie Theatre** 26 Berkeley Street

FOR MORE INFORMATION AND TICKETS, VISIT  
**MUSICALSTAGECOMPANY.COM**

**#KELLYVKELLY**

